



Rabbit Anti-ZFX antibody

SL12306R

Product Name:	ZFX
Chinese Name:	Zinc finger proteinX染色体蛋白抗体
Alias:	X-linked zinc finger protein; zfx; ZFX_HUMAN; Zinc finger protein, X-linked; Zinc Finger X Chromosomal Protein; Zinc finger X-chromosomal protein.
Organism Species:	Rabbit
Clonality:	Polyclonal
React Species:	Human,Mouse,Rat,Dog,Cow,Sheep,
Applications:	ELISA=1:500-1000IHC-P=1:400-800IHC-F=1:400-800ICC=1:100-500IF=1:100-500 (Paraffin sections need antigen repair) not yet tested in other applications. optimal dilutions/concentrations should be determined by the end user.
Molecular weight:	90kDa
Cellular localization:	The nucleus
Form:	Lyophilized or Liquid
Concentration:	1mg/ml
immunogen:	KLH conjugated synthetic peptide derived from human ZFX:401-500/805
Lsotype:	IgG
Purification:	affinity purified by Protein A
Storage Buffer:	0.01M TBS(pH7.4) with 1% BSA, 0.03% Proclin300 and 50% Glycerol.
Storage:	Store at -20 °C for one year. Avoid repeated freeze/thaw cycles. The lyophilized antibody is stable at room temperature for at least one month and for greater than a year when kept at -20°C. When reconstituted in sterile pH 7.4 0.01M PBS or diluent of antibody the antibody is stable for at least two weeks at 2-4 °C.
PubMed:	PubMed
Product Detail:	Zinc-finger proteins contain DNA-binding domains and have a wide variety of functions, most of which encompass some form of transcriptional activation or repression. The majority of zinc-finger proteins contain a Krüppel-type DNA binding domain and a KRAB domain, which is thought to interact with KAP1, thereby recruiting histone modifying proteins. Zfy1 (zinc finger protein 1, Y linked), also known Zfy-1 is a 782 amino acid nuclear protein belonging to the Krüppel C2H2-type zinc-finger protein

family and the ZFX/ZFY subfamily. Containing thirteen C2H2-type zinc fingers, Zfy1 is expressed in the genital ridge and adult testis and may be a probable transcription activator. The gene encoding Zfy1 maps to mouse chromosome Y.

Function:

Probable transcriptional activator.

Subcellular Location:

Nucleus.

Similarity:

Belongs to the krueppel C2H2-type zinc-finger protein family. ZFX/ZFY subfamily. Contains 13 C2H2-type zinc fingers.

SWISS:

P17010

Gene ID:

7543

Database links:

[Entrez Gene: 7543](#)Human

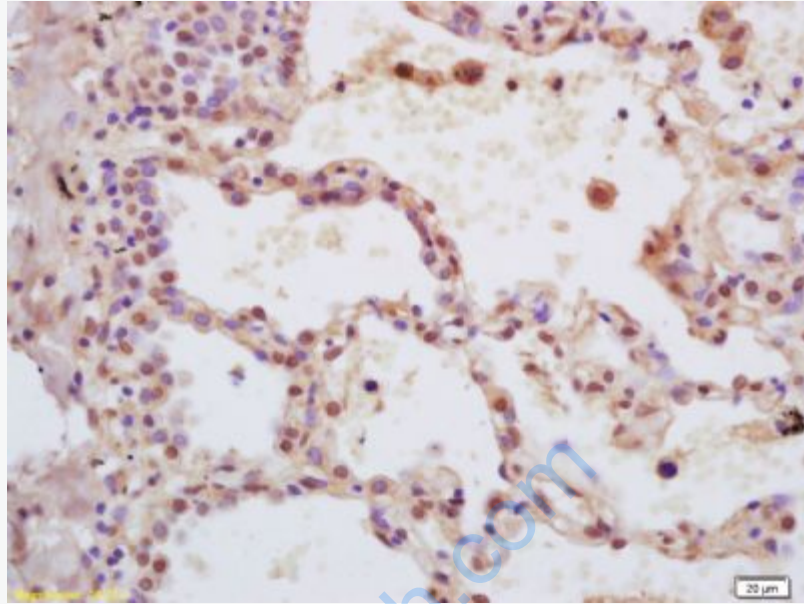
[Omim: 314980](#)Human

[SwissProt: P17010](#)Human

[Unigene: 336681](#)Human

Important Note:

This product as supplied is intended for research use only, not for use in human, therapeutic or diagnostic applications.



Picture:

Tissue/cell: human lung carcinoma; 4% Paraformaldehyde-fixed and paraffin-embedded;

Antigen retrieval: citrate buffer (0.01M, pH 6.0), Boiling bathing for 15min; Block endogenous peroxidase by 3% Hydrogen peroxide for 30min; Blocking buffer (normal goat serum,C-0005) at 37°C for 20 min;

Incubation: Anti-ZFX Polyclonal Antibody, Unconjugated(SL12306R) 1:200, overnight at 4°C, followed by conjugation to the secondary antibody(SP-0023) and DAB(C-0010) staining