




Rabbit Anti-ABCG1 antibody

SL1231R

Product Name:	ABCG1
Chinese Name:	三磷酸腺苷结合盒亚家族G1抗体
Alias:	ABC transporter 8; Abc8; ATP-binding cassette sub-family G member 1; ATP-binding cassette transporter 8; ATP-binding cassette transporter member 1 of subfamily G; ATP-binding cassette, sub family G WHITE member 1; homolog of Drosophila white; MGC34313; White protein homolog; White protein homolog ATP binding cassette transporter 8; ABC8; ABCG1; ABCG1_HUMAN; ATP-binding cassette sub family G member 1; WHT1; WHITE1; wht1.
文献引用 	Specific References(1) SL1231R has been referenced in 1 publications. [IF=1.55]Jia, Lianqun, et al. "Effects of Tanshinone IIA on the modulation of miR?33a and the SREBP?2/Pcsk9 signaling pathway in hyperlipidemic rats." Molecular Medicine Reports (2016).WB;Rat. PubMed:27082100
Organism Species:	Rabbit
Clonality:	Polyclonal
React Species:	Human,Mouse,Rat,
Applications:	ELISA=1:500-1000IHC-P=1:400-800IHC-F=1:400-800Flow-Cyt=0.2ug/testIF=1:100-500 (Paraffin sections need antigen repair) not yet tested in other applications. optimal dilutions/concentrations should be determined by the end user.
Molecular weight:	76kDa
Cellular localization:	cytoplasmicThe cell membrane
Form:	Lyophilized or Liquid
Concentration:	1mg/ml
immunogen:	KLH conjugated synthetic peptide derived from human ABCG1:561-678/678
Lsotype:	IgG
Purification:	affinity purified by Protein A

Storage Buffer:	0.01M TBS(pH7.4) with 1% BSA, 0.03% Proclin300 and 50% Glycerol.
Storage:	Store at -20 °C for one year. Avoid repeated freeze/thaw cycles. The lyophilized antibody is stable at room temperature for at least one month and for greater than a year when kept at -20°C. When reconstituted in sterile pH 7.4 0.01M PBS or diluent of antibody the antibody is stable for at least two weeks at 2-4 °C.
PubMed:	PubMed
Product Detail:	<p>The protein encoded by this gene is a member of the superfamily of ATP-binding cassette (ABC) transporters. ABC proteins transport various molecules across extra- and intra-cellular membranes. ABC genes are divided into seven distinct subfamilies (ABC1, MDR/TAP, MRP, ALD, OABP, GCN20, White). This protein is a member of the White subfamily. It is involved in macrophage cholesterol and phospholipids transport, and may regulate cellular lipid homeostasis in other cell types. Six alternative splice variants have been identified.</p> <p>Function: Transporter involved in macrophage lipid homeostasis. Is an active component of the macrophage lipid export complex. Could also be involved in intracellular lipid transport processes. The role in cellular lipid homeostasis may not be limited to macrophages.</p> <p>Subunit: May form heterodimers with several heterologous partners of the ABCG subfamily.</p> <p>Subcellular Location: Endoplasmic reticulum membrane. Golgi apparatus membrane. Predominantly localized in the intracellular compartments mainly associated with the endoplasmic reticulum (ER) and Golgi membranes.</p> <p>Tissue Specificity: Expressed in several tissues. Expressed in macrophages; expression is increased in macrophages from patients with Tangier disease.</p> <p>Post-translational modifications: Palmitoylation at Cys-315 seems important for trafficking from the endoplasmic reticulum.</p> <p>Similarity: Belongs to the ABC transporter superfamily. ABCG family. Eye pigment precursor importer (TC 3.A.1.204) subfamily. Contains 1 ABC transmembrane type-2 domain. Contains 1 ABC transporter domain.</p> <p>SWISS: P45844</p> <p>Gene ID: 9619</p>

Database links:

[Entrez Gene: 510745](#)Cow

[Entrez Gene: 9619](#)Human

[Entrez Gene: 85264](#)Rat

[Omin: 603076](#)Human

[SwissProt: P45844](#)Human

[Unigene: 124649](#)Human

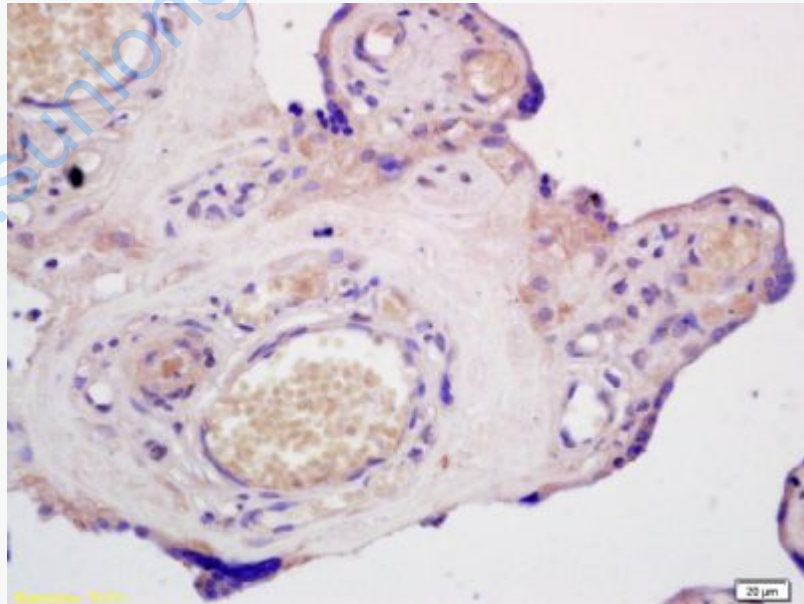
[Unigene: 8398](#)Rat

Important Note:

This product as supplied is intended for research use only, not for use in human, therapeutic or diagnostic applications.

ABCG1是ABCTransporter家族中的成员, 是位于组织浆膜中的单体Transporter, 多分布于肝、小肠、胎盘、脂肪和脾. 主要用于脂质/Lipoprotein代谢与动脉粥样硬化方面的研究.

Picture:

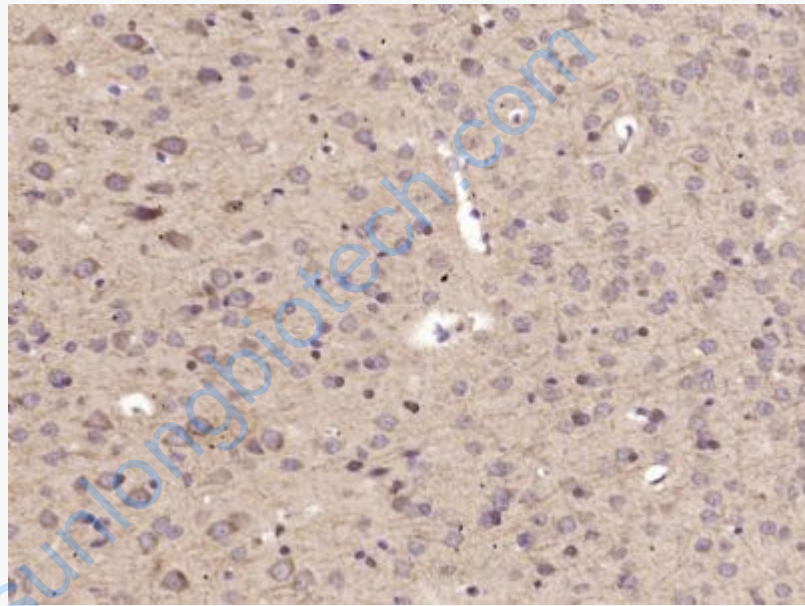


Tissue/cell: human placenta tissue; 4% Paraformaldehyde-fixed and paraffin-embedded;

Antigen retrieval: citrate buffer (0.01M, pH 6.0), Boiling bathing for 15min; Block

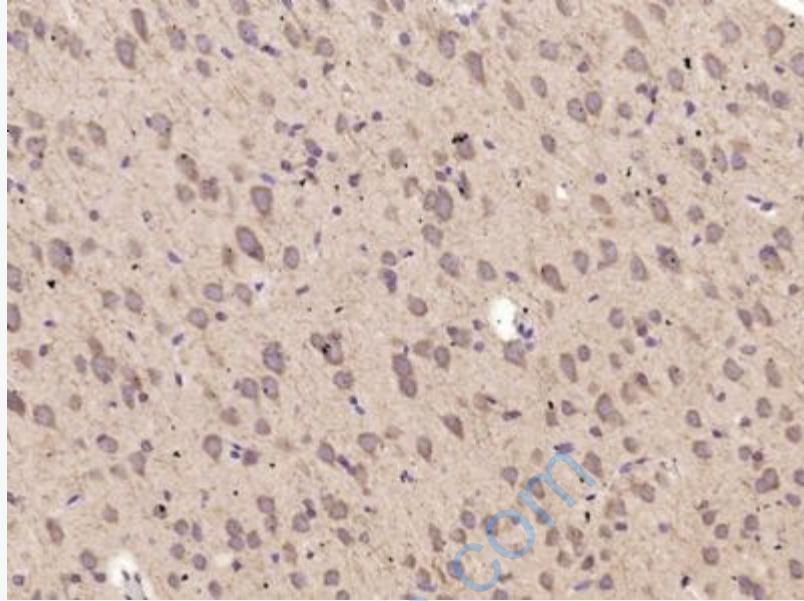
endogenous peroxidase by 3% Hydrogen peroxide for 30min; Blocking buffer (normal goat serum,C-0005) at 37°C for 20 min;

Incubation: Anti-ABCG1 Polyclonal Antibody, Unconjugated(SL1231R) 1:200, overnight at 4°C, followed by conjugation to the secondary antibody(SP-0023) and DAB(C-0010) staining

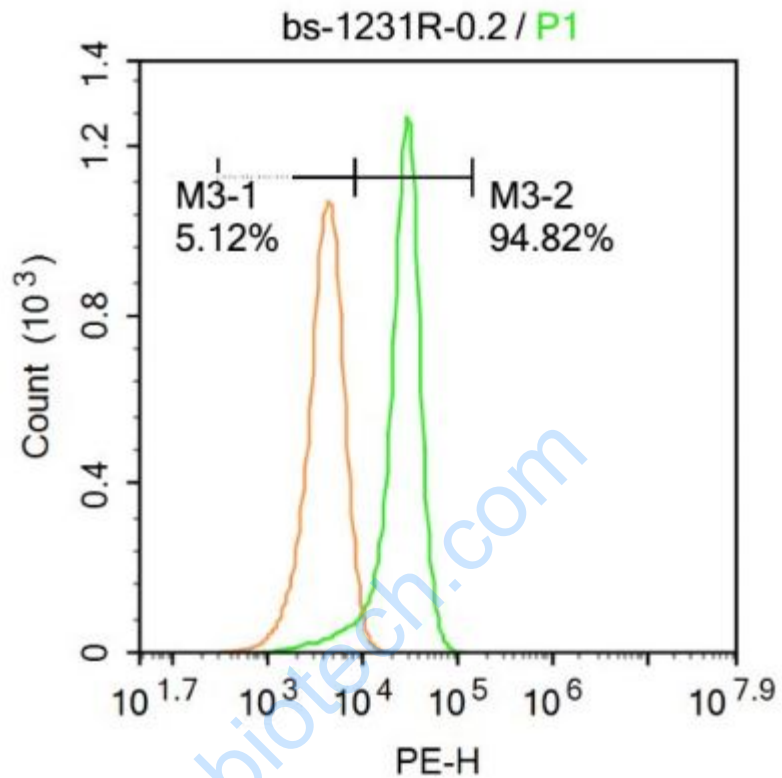


Paraformaldehyde-fixed, paraffin embedded (Mouse brain); Antigen retrieval by microwave in sodium citrate buffer (pH6.0) ; Block endogenous peroxidase by 3% hydrogen peroxide for 30 minutes; Blocking buffer (3% BSA) at RT for 30min;

Antibody incubation with (ABCG1) Polyclonal Antibody, Unconjugated (SL1231R) at 1:400 overnight at 4°C, followed by conjugation to the secondary antibody (labeled with HRP)and DAB staining.



Paraformaldehyde-fixed, paraffin embedded (Rat brain); Antigen retrieval by microwave in sodium citrate buffer (pH6.0) ; Block endogenous peroxidase by 3% hydrogen peroxide for 30 minutes; Blocking buffer (3% BSA) at RT for 30min; Antibody incubation with (ABCG1) Polyclonal Antibody, Unconjugated (SL1231R) at 1:400 overnight at 4°C, followed by conjugation to the secondary antibody (labeled with HRP) and DAB staining.



Blank control: Molt-4.

Primary Antibody (green line): Rabbit Anti-ABCG1 antibody (SL1231R)

Dilution: 0.2 μ g / 10⁶ cells;

Isotype Control Antibody (orange line): Rabbit IgG .

Secondary Antibody : Goat anti-rabbit IgG-PE

Dilution: 0.2 μ g /test.

Protocol

The cells were fixed with 4% PFA (10min at room temperature) and then permeabilized with 20% PBST for 20 min at -20°C. The cells were then incubated in 5% BSA to block non-specific protein-protein interactions for 30 min at room temperature. Cells stained with Primary Antibody for 30 min at room temperature.

	<p>The secondary antibody used for 40 min at room temperature. Acquisition of 20,000 events was performed.</p>
--	--

www.sunlongbiotech.com