



Rabbit Anti-GCNT1 antibody

SL12334R

Product Name:	GCNT1
Chinese Name:	GCNT1 葡萄糖转移酶抗体
Alias:	3-galactosyl-O-glycosyl-glycoprotein beta-1; 6-N-acetylglucosaminyltransferase; Beta-1; Beta-1,3-galactosyl-O-glycosyl-glycoprotein beta-1,6-N-acetylglucosaminyltransferase; C2GNT; C2GNT L; C2GNT1; C2GnTL; Core 2 branching enzyme; Core 2 GNT; Core 2-branching enzyme; Core2 GlcNAc transferase; Core2-GlcNAc-transferase; GCNT 1; GCNT 1; GCNT1; GCNT1_HUMAN; glucosaminyl (N-acetyl) transferase 1 core 2; NACGT2.
Organism Species:	Rabbit
Clonality:	Polyclonal
React Species:	Human,Mouse,Rat,Dog,Cow,Sheep,
Applications:	WB=1:500-2000ELISA=1:500-1000IHC-P=1:400-800IHC-F=1:400-800ICC=1:100-500IF=1:100-500 (Paraffin sections need antigen repair) not yet tested in other applications. optimal dilutions/concentrations should be determined by the end user.
Molecular weight:	50kDa
Cellular localization:	cytoplasmicThe cell membrane
Form:	Lyophilized or Liquid
Concentration:	1mg/ml
immunogen:	KLH conjugated synthetic peptide derived from Human GCNT1:201-260/428
Lsotype:	IgG
Purification:	affinity purified by Protein A
Storage Buffer:	0.01M TBS(pH7.4) with 1% BSA, 0.03% Proclin300 and 50% Glycerol.
Storage:	Store at -20 °C for one year. Avoid repeated freeze/thaw cycles. The lyophilized antibody is stable at room temperature for at least one month and for greater than a year when kept at -20°C. When reconstituted in sterile pH 7.4 0.01M PBS or diluent of antibody the antibody is stable for at least two weeks at 2-4 °C.
PubMed:	PubMed
Product Detail:	GCNT1 is expressed in a variety of cell types, including lymphocytes and mucin-producing cells. Specifically, GCNT1 expression in leukocytes regulates the synthesis of

core 2 O-glycans that carry sialyl-Lewis x (sLex) oligosaccharides, which confer high affinity binding to Selectins. Downregulation of Selectin ligand expression levels has been shown to inhibit tissue infiltration. Therefore, GCNT1 represents a potential drug target for the treatment of inflammatory disorders and other pathologies involving Selectins.

Function:

Forms critical branches in O-glycans.

Subcellular Location:

Golgi apparatus membrane.

Tissue Specificity:

Highly expressed in activated T-lymphocytes and myeloid cells.

Similarity:

Belongs to the glycosyltransferase 14 family.

SWISS:

Q02742

Gene ID:

2650

Database links:

[Entrez Gene: 2650](#)Human

[Entrez Gene: 14537](#)Mouse

[Oimim: 600391](#)Human

[SwissProt: Q02742](#)Human

[SwissProt: Q09324](#)Mouse

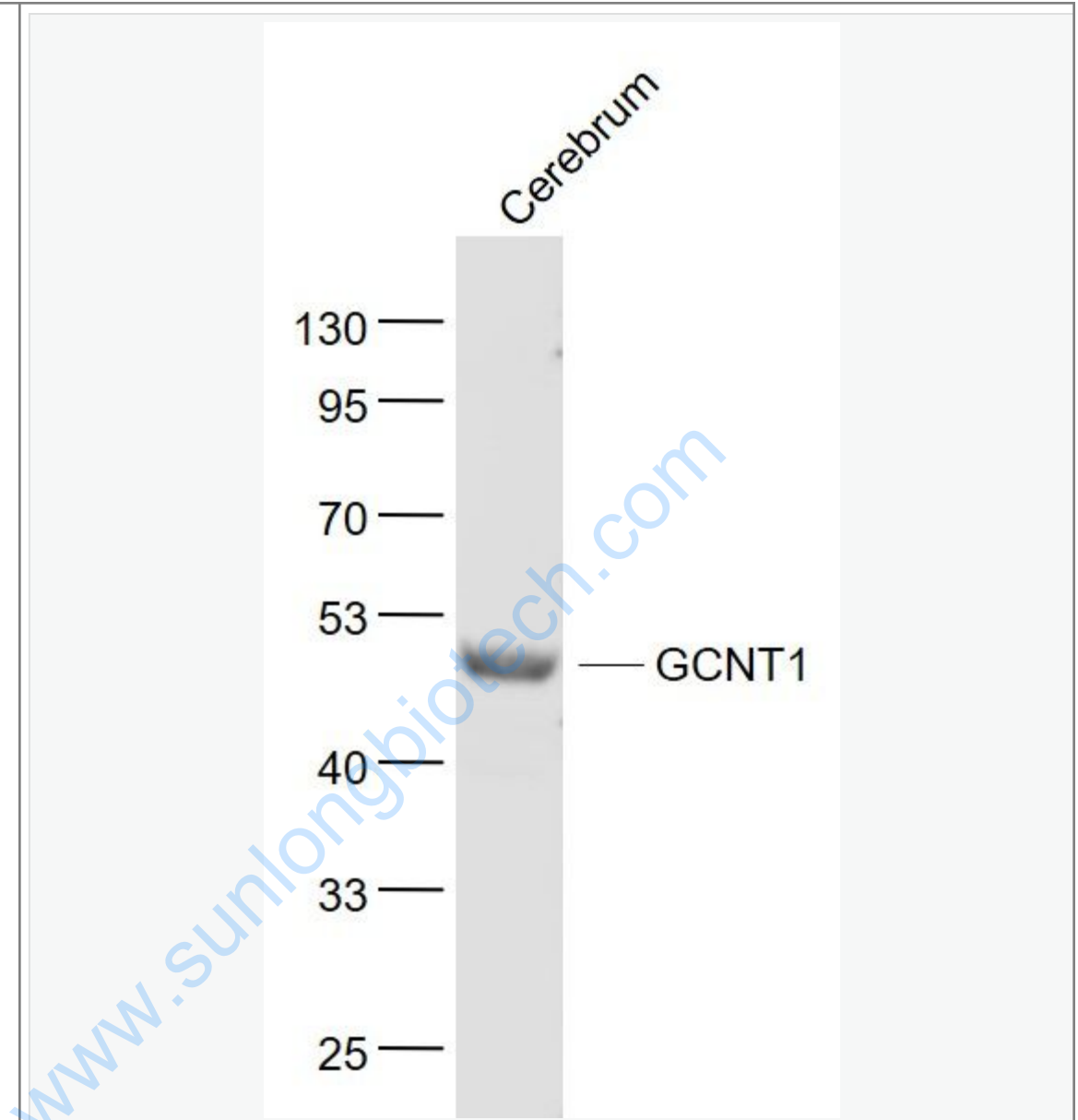
[Unigene: 521568](#)Human

[Unigene: 244825](#)Mouse

Important Note:

This product as supplied is intended for research use only, not for use in human, therapeutic or diagnostic applications.

Picture:



Sample:

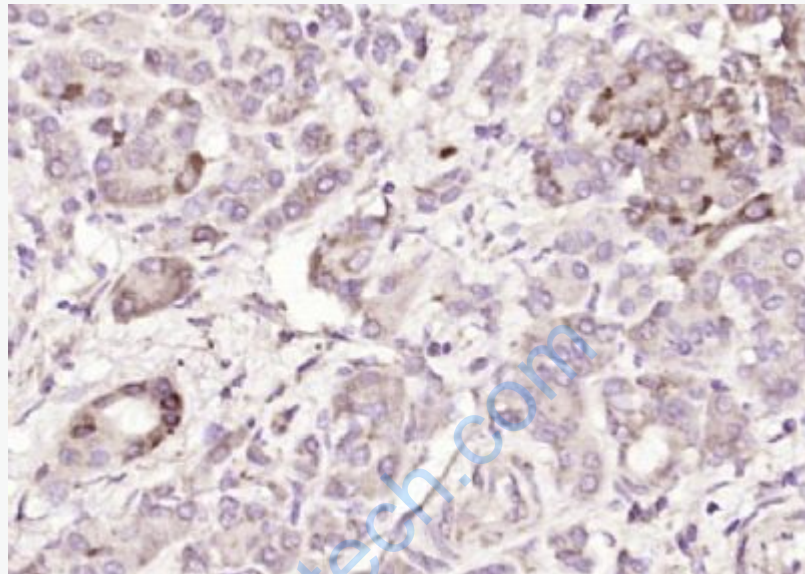
Cerebrum (Mouse) Lysate at 40 ug

Primary: Anti- GCNT1 (SL12334R) at 1/1000 dilution

Secondary: IRDye800CW Goat Anti-Rabbit IgG at 1/20000 dilution

Predicted band size: 50 kD

Observed band size: 50 kD



Paraformaldehyde-fixed, paraffin embedded (human pancreatic cancer); Antigen retrieval by boiling in sodium citrate buffer (pH6.0) for 15min; Block endogenous peroxidase by 3% hydrogen peroxide for 20 minutes; Blocking buffer (normal goat serum) at 37°C for 30min; Antibody incubation with (GCNT1) Polyclonal Antibody, Unconjugated (SL12334R) at 1:200 overnight at 4°C, followed by operating according to SP Kit(Rabbit) (sp-0023) instructions and DAB staining.