



Rabbit Anti-CPA3 antibody

SL12338R

Product Name:	CPA3
Chinese Name:	肥大细胞羧肽酶A3抗体
Alias:	carboxypeptidase A; Carboxypeptidase A3; carboxypeptidase A3 mast cell; CBPA3_HUMAN; Cpa3; Mast cell carboxypeptidase A; mast cell carboxypeptidase A3; MC CPA; MC-CPA.
Organism Species:	Rabbit
Clonality:	Polyclonal
React Species:	Human,Mouse,Rat,
Applications:	WB=1:500-2000ELISA=1:500-1000IHC-P=1:400-800IHC-F=1:400-800ICC=1:100-500IF=1:100-500 (Paraffin sections need antigen repair) not yet tested in other applications. optimal dilutions/concentrations should be determined by the end user.
Molecular weight:	36kDa
Cellular localization:	cytoplasmic
Form:	Lyophilized or Liquid
Concentration:	1mg/ml
immunogen:	KLH conjugated synthetic peptide derived from Human CPA3/MC-CPA:101-200/417
Lsotype:	IgG
Purification:	affinity purified by Protein A
Storage Buffer:	0.01M TBS(pH7.4) with 1% BSA, 0.03% Proclin300 and 50% Glycerol.
Storage:	Store at -20 °C for one year. Avoid repeated freeze/thaw cycles. The lyophilized antibody is stable at room temperature for at least one month and for greater than a year when kept at -20°C. When reconstituted in sterile pH 7.4 0.01M PBS or diluent of antibody the antibody is stable for at least two weeks at 2-4 °C.
PubMed:	PubMed
Product Detail:	Carboxypeptidase A (CPA) is a pancreatic exopeptidase which hydrolyses the peptide bond adjacent to the C-terminal end in polypeptide chains. Mast cell carboxypeptidase A (MC-CPA), a part of the peptidase M14 family, is a highly conserved metalloprotease localized to the secretory granules, along with tryptases and chymases. MC-CPA is stored as an active enzyme in the granule and is released, along with other inflammatory

mediators, upon mast cell degranulation. MC-CPA mirrors pancreatic carboxypeptidase A in cleaving COOH-terminal aromatic and aliphatic amino acid residues. The optimum pH of MC-CPA is between neutral and basic, depending upon the substrate. The MC-CPA gene, CPA3, resides on chromosome 3 and contains 11 exons.

Subcellular Location:

Cytoplasmic vesicle, secretory vesicle. Secretory granules.

Similarity:

Belongs to the peptidase M14 family.

SWISS:

P15088

Gene ID:

1359

Database links:

[Entrez Gene: 1359](#) Human

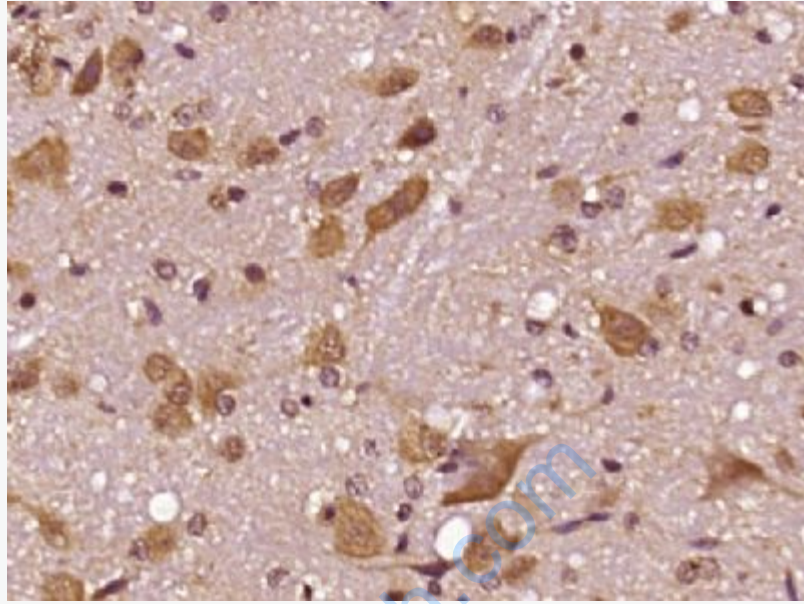
[Omim: 114851](#) Human

[SwissProt: P15088](#) Human

[Unigene: 646](#) Human

Important Note:

This product as supplied is intended for research use only, not for use in human, therapeutic or diagnostic applications.



Picture:

Paraformaldehyde-fixed, paraffin embedded (Rat brain); Antigen retrieval by boiling in sodium citrate buffer (pH6.0) for 15min; Block endogenous peroxidase by 3% hydrogen peroxide for 20 minutes; Blocking buffer (normal goat serum) at 37°C for 30min; Antibody incubation with (CPA3) Polyclonal Antibody, Unconjugated (SL12338R) at 1:400 overnight at 4°C, followed by operating according to SP Kit(Rabbit) (sp-0023) instructions and DAB staining.