



Rabbit Anti-LRRC25 antibody

SL12339R

Product Name:	LRRC25
Chinese Name:	富含亮氨酸重复蛋白25抗体
Alias:	FLJ38116; Leucine rich repeat containing 25; Leucine rich repeat containing protein 25; LRRC 25; MAPA; Monocyte and plasmacytoid activated molecule; LRC25 HUMAN.
Organism Species:	Rabbit
Clonality:	Polyclonal
React Species:	Human,
Applications:	WB=1:500-2000ELISA=1:500-1000IHC-P=1:400-800IHC-F=1:400-800ICC=1:100-500IF=1:100-500 (Paraffin sections need antigen repair) not yet tested in other applications. optimal dilutions/concentrations should be determined by the end user.
Molecular weight:	31kDa
Cellular localization:	The cell membrane
Form:	Lyophilized or Liquid
Concentration:	1mg/ml
immunogen:	KLH conjugated synthetic peptide derived from human LRRC25:81-180/305<Extracellular>
Lsotype:	IgG
Purification:	affinity purified by Protein A
Storage Buffer:	0.01M TBS(pH7.4) with 1% BSA, 0.03% Proclin300 and 50% Glycerol.
Storage:	Store at -20 °C for one year. Avoid repeated freeze/thaw cycles. The lyophilized antibody is stable at room temperature for at least one month and for greater than a year when kept at -20°C. When reconstituted in sterile pH 7.4 0.01M PBS or diluent of antibody the antibody is stable for at least two weeks at 2-4 °C.
PubMed:	PubMed
Product Detail:	LRRC25 is a 305 amino acid protein that contains two LRR repeats. LRRC25 is a single-pass type I membrane protein that is expressed in monocyte-derived dendritic cells (MDDC), granulocytes, monocytes, plasmacytoid dendritic cells (PDC), B-lymphocytes, peripheral blood leukocytes, spleen and bone marrow, with lower levels in lymph nodes, fetal liver, and appendix. LRRC25 may play a role in the activation of

cells of innate and acquired immunity.

Function:

LRRC25 is a single-pass type I membrane protein. It contains 2 LRR (leucine-rich) repeats. LRRC25 may be involved in the activation of cells of innate and acquired immunity.

Subcellular Location:

Membrane; Single-pass type I membrane protein.

Tissue Specificity:

Expressed in plasmacytoid dendritic cells (PDC), monocyte-derived dendritic cells (MDDC), granulocytes, monocytes, B-lymphocytes, peripheral blood leukocytes, spleen, bone marrow, and, to a lesser extent, lymph nodes, fetal liver, and appendix but not in thymus.

SWISS:

Q8N386

Gene ID:

126364

Database links:

[Entrez Gene: 126364](#)Human

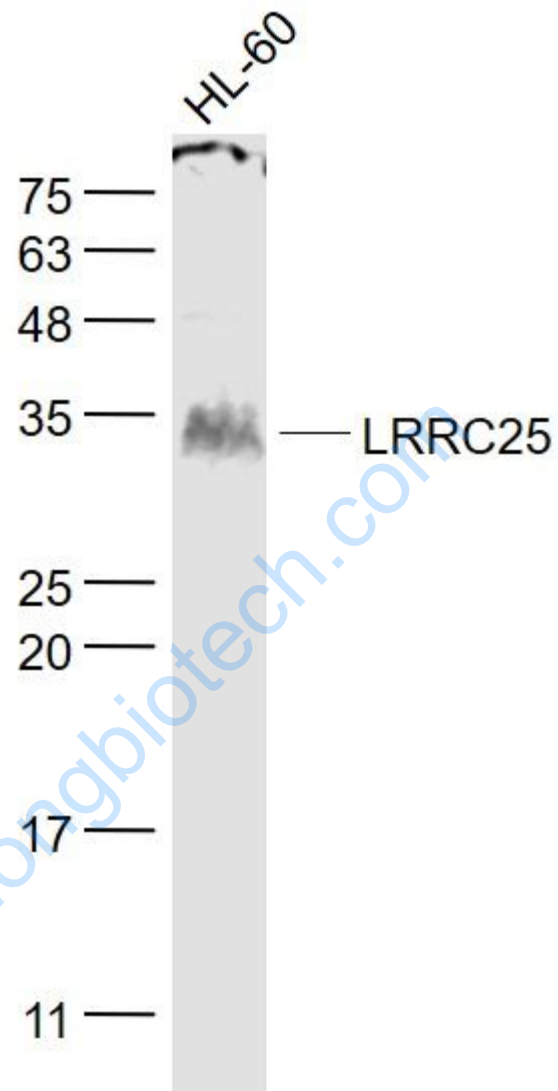
[Omim: 607518](#)Human

[SwissProt: Q8N386](#)Human

Important Note:

This product as supplied is intended for research use only, not for use in human, therapeutic or diagnostic applications.

Picture:



Sample:

HL-60(Human) Cell Lysate at 30 ug

Primary: Anti- LRRRC25 (SL12339R) at 1/1000 dilution

Secondary: IRDye800CW Goat Anti-Rabbit IgG at 1/20000 dilution

Predicted band size: 31 kD

Observed band size: 31 kD