



Rabbit Anti-ETV2 antibody

SL12341R

Product Name:	ETV2
Chinese Name:	ETS相关蛋白71抗体
Alias:	ER71; Ets related protein 71; ETS translocation variant 2; Ets variant gene 2; Ets-related protein 71; ETSRP71; ETV2_HUMAN.
Organism Species:	Rabbit
Clonality:	Polyclonal
React Species:	Human,Mouse,Rat,Dog,Pig,Cow,Horse,Sheep,
Applications:	WB=1:500-2000ELISA=1:500-1000Flow-Cyt=1µg/Test not yet tested in other applications. optimal dilutions/concentrations should be determined by the end user.
Molecular weight:	37kDa
Cellular localization:	The nucleus
Form:	Lyophilized or Liquid
Concentration:	1mg/ml
immunogen:	KLH conjugated synthetic peptide derived from Human ETV2/ER71:251-342/342
Lsotype:	IgG
Purification:	affinity purified by Protein A
Storage Buffer:	0.01M TBS(pH7.4) with 1% BSA, 0.03% Proclin300 and 50% Glycerol.
Storage:	Store at -20 °C for one year. Avoid repeated freeze/thaw cycles. The lyophilized antibody is stable at room temperature for at least one month and for greater than a year when kept at -20°C. When reconstituted in sterile pH 7.4 0.01M PBS or diluent of antibody the antibody is stable for at least two weeks at 2-4 °C.
PubMed:	PubMed
Product Detail:	ER71 is a 341 amino acid member of the ETS protein family. Localized to the nucleus, ER71 contains one ETS DNA-binding domain which binds to DNA sequences containing the consensus pentanucleotide 5'-CGGA[AT]-3'. The gene encoding ER71 maps to human chromosome 19, which consists of around 63 million bases with over 1,400 genes, making up over 2% of human genomic DNA. Chromosome 19 is recognized for having the greatest gene density of the human chromosomes. It is the genetic home for a number of immunoglobulin superfamily members, including the

killer cell and leukocyte Ig-like receptors, a number of ICAMs, the CEACAM and PSG family and Fc γ receptors. Key genes for eye color and hair color also map to chromosome 19. Peutz-Jeghers syndrome, spinocerebellar ataxia type 6, the stroke disorder CADASIL, hypercholesterolemia and insulin-dependent diabetes have been linked to chromosome 19. Translocations with chromosome 19 and chromosome 14 can be seen in some lymphoproliferative disorders and typically involve the proto-oncogene BCL3.

Function:

ETV2 is a member of the ETS family of transcription factors. It has been proposed that ETV2 acts downstream of BMP, notch and wnt signalling in blood and vessel specification. ER71 has also shown to be important for Flk1 expression as well as hematopoietic and vascular development.

Subcellular Location:

Nuclear.

Similarity:

Belongs to the ETS family.
Contains 1 ETS DNA-binding domain.

SWISS:

O00321

Gene ID:

2116

Database links:

[Entrez Gene: 2116](#) Human

[Omin: 609358](#) Human

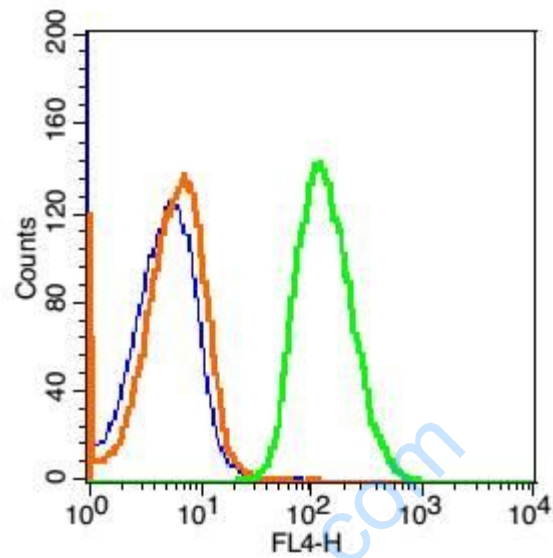
[SwissProt: O00321](#) Human

[Unigene: 194061](#) Human

Important Note:

This product as supplied is intended for research use only, not for use in human, therapeutic or diagnostic applications.

Picture:



Blank control: Hela Cells (fixed with 2% paraformaldehyde (10 min) and then permeabilized with ice-cold 90% methanol for 30 min on ice).

Primary Antibody: Rabbit Anti-ETV2/AF647 Conjugated antibody (SL12341R),

Dilution: 1 μ g in 100 μ L 1X PBS containing 0.5% BSA;

Isotype Control Antibody: Rabbit IgG/AF647 (orange), used under the same conditions.