



Rabbit Anti-5T4 antibody

SL12348R

Product Name:	5T4
Chinese Name:	滋养层细胞glycoprotein5T4抗体
Alias:	5T4; 5T4 oncofetal antigen; 5T4 oncofetal trophoblast glycoprotein; 5T4 oncotrophoblast glycoprotein; 5T4AG; M6P1; TPBG; TPBG_HUMAN; Trophoblast glycoprotein.
Organism Species:	Rabbit
Clonality:	Polyclonal
React Species:	Human,Mouse,Rat,Dog,Cow,
Applications:	WB=1:500-2000ELISA=1:500-1000IHC-P=1:400-800IHC-F=1:400-800ICC=1:100-500IF=1:100-500 (Paraffin sections need antigen repair) not yet tested in other applications. optimal dilutions/concentrations should be determined by the end user.
Molecular weight:	43kDa
Cellular localization:	The cell membrane
Form:	Lyophilized or Liquid
Concentration:	1mg/ml
immunogen:	KLH conjugated synthetic peptide derived from human TPBG/5T4:31-100/420<Extracellular>
Lsotype:	IgG
Purification:	affinity purified by Protein A
Storage Buffer:	0.01M TBS(pH7.4) with 1% BSA, 0.03% Proclin300 and 50% Glycerol.
Storage:	Store at -20 °C for one year. Avoid repeated freeze/thaw cycles. The lyophilized antibody is stable at room temperature for at least one month and for greater than a year when kept at -20°C. When reconstituted in sterile pH 7.4 0.01M PBS or diluent of antibody the antibody is stable for at least two weeks at 2-4 °C.
PubMed:	PubMed
Product Detail:	TPBG is a 420 amino acid single-pass type I membrane protein expressed by all types of trophoblasts as early as 9 weeks of development. TPBG contains an N-terminal putative signal sequence, a 310-residue extracellular region, a membrane anchorage domain and a 44-amino acid cytoplasmic tail with a potential phosphorylation site. The

extracellular region has seven potential N-glycosylation sites and seven leucine-rich repeats, which are located in two regions separated by a hydrophilic stretch. Suggested to be involved in cell adhesion, TPBG may also be associated with tumor growth and progression.

Subcellular Location:

Membrane.

Tissue Specificity:

Expressed by all types of trophoblasts as early as 9 weeks of development. Specific for trophoblastic cells except for amniotic epithelium. In adult tissues, the expression is limited to a few epithelial cell types but is found on a variety of carcinoma.

Similarity:

Contains 6 LRR (leucine-rich) repeats.

Contains 1 LRRCT domain.

Contains 1 LRRNT domain.

SWISS:

Q13641

Gene ID:

7162

Database links:

[Entrez Gene: 7162](#) Human

[Entrez Gene: 21983](#) Mouse

[Entrez Gene: 83684](#) Rat

[Omim: 190920](#) Human

[SwissProt: Q13641](#) Human

[SwissProt: Q9Z0L0](#) Mouse

[SwissProt: Q5PQV5](#) Rat

[Unigene: 82128](#) Human

[Unigene: 20864](#) Mouse

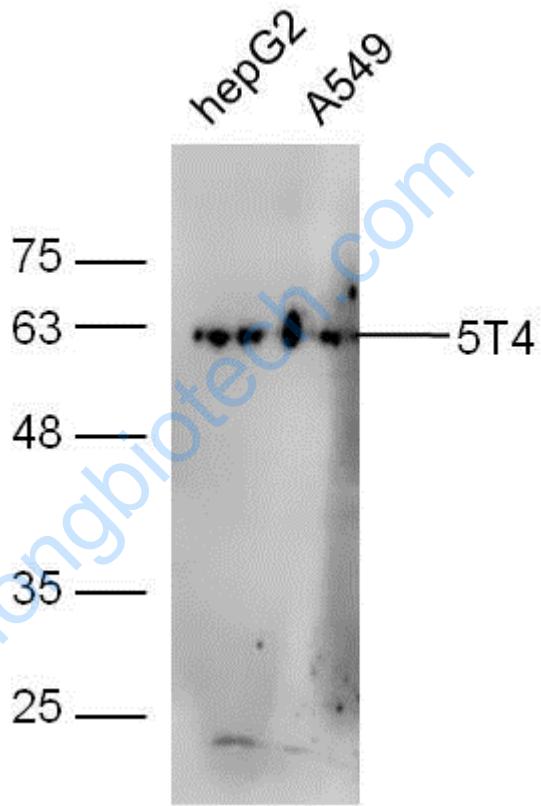
[Unigene: 484180](#) Mouse

[Unigene: 43122](#) Rat

Important Note:

This product as supplied is intended for research use only, not for use in human, therapeutic or diagnostic applications.

Picture:



Sample:

HepG2 Cell (Human) Lysate at 30 ug

A549 Cell (Human) Lysate at 30 ug

Primary: Anti-5T4 (SL12348R) at 1/300 dilution

Secondary: IRDye800CW Goat Anti-Rabbit IgG at 1/20000 dilution

Predicted band size: 43 kD

	Observed band size: 63 kD
--	---------------------------

www.sunlongbiotech.com