



Rabbit Anti-RASSF1A antibody

SL1234R

Product Name:	RASSF1A
Chinese Name:	Ras相关区域家族1A抗体
Alias:	123F2; AA536941; AU044980; D4Mgi37; MGC94319; NORE2A; PTS; RASSF1; Rassf1A; Rassf1B; Rassf1C; RDA32; REH3P21; Ras association domain family 1A; RASF1_HUMAN.
文献引用 PubMed :	<p>Specific References(2) SL1234R has been referenced in 2 publications.</p> <p>[IF=2.41]Liu, Wen-bin, et al. "CpG island hypermethylation of multiple tumor suppressor genes associated with loss of their protein expression during rat lung carcinogenesis induced by 3-methylcholanthrene and diethylnitrosamine." Biochemical and biophysical research communications 402.3 (2010): 507.IHC-P;Rat. PubMed:20970405</p> <p>[IF=3.02]Klacz, Jakub, et al. "Decreased expression of RASSF1A tumor suppressor gene is associated with worse prognosis in clear cell renal cell carcinoma."International Journal of Oncology.WB;Human. PubMed:26648328</p>
Organism Species:	Rabbit
Clonality:	Polyclonal
React Species:	Human,Mouse,Rat,Cow,Horse,Sheep,
Applications:	ELISA=1:500-1000IHC-P=1:400-800IHC-F=1:400-800IF=1:100-500 (Paraffin sections need antigen repair) not yet tested in other applications. optimal dilutions/concentrations should be determined by the end user.
Molecular weight:	39kDa
Cellular localization:	The nucleuscytoplasmic
Form:	Lyophilized or Liquid

Concentration:	1mg/ml
immunogen:	KLH conjugated synthetic peptide derived from human RASSF1A:145-260/340
Lsotype:	IgG
Purification:	affinity purified by Protein A
Storage Buffer:	0.01M TBS(pH7.4) with 1% BSA, 0.03% Proclin300 and 50% Glycerol.
Storage:	Store at -20 °C for one year. Avoid repeated freeze/thaw cycles. The lyophilized antibody is stable at room temperature for at least one month and for greater than a year when kept at -20°C. When reconstituted in sterile pH 7.4 0.01M PBS or diluent of antibody the antibody is stable for at least two weeks at 2-4 °C.
PubMed:	PubMed
Product Detail:	<p>The tumor suppressor gene RASSF1A (3p21.3), human Ras association domain family 1A, is expressed in heart, brain, placenta, lung, liver, skeletal muscle, kidney, pancreas, spleen, thymus, prostate, testis, small intestine, colon, and peripheral blood leukocytes. RASSF1A expression is inhibited by hypermethylation of the CpG island including the promoter and early transcribed regions of the human RASSF1A gene. Hypermethylated RASSF1A promoter is observed in primary tumors. Furthermore, RASSF1A is related with cell cycle regulation, apoptosis and microtubule stability. Potential tumor suppressor. Isoform A interacts with CDC20, an activator of the anaphase-promoting complex, APC, resulting in the inhibition of APC activity and mitotic progression. More specifically, RASSF1a inhibits proliferation by negatively regulating cell cycle progression at the level of G1/S-phase transition by regulating accumulation of cyclin D1 protein. It also inhibits the activation of STK3 and STK4 and may play an additional role as a scaffold protein, directing these enzymes to sites of activation. Isoform C has been shown not to perform these roles, and no function has been identified for this isoform.</p> <p>Function: Potential tumor suppressor. Required for death receptor-dependent apoptosis. Mediates activation of STK4 during Fas-induced apoptosis. When associated with MOAP1, promotes BAX conformational change and translocation to mitochondrial membranes in response to TNF and TNFSF10 stimulation. Isoform A interacts with CDC20, an activator of the anaphase-promoting complex, APC, resulting in the inhibition of APC activity and mitotic progression. Inhibits proliferation by negatively regulating cell cycle progression at the level of G1/S-phase transition by regulating accumulation of cyclin D1 protein. Isoform C has been shown not to perform these roles, no function has been identified for this isoform. Isoform A disrupts interactions among MDM2, DAXX and USP7, thus contributing to the efficient activation of TP53 by promoting MDM2 self-ubiquitination in cell-cycle checkpoint control in response to DNA damage.</p> <p>Subunit: Interacts with MAP1S and XPA. Binds to the N-terminal of CDC20 during prometaphase. Binds to STK3/MST2 and STK4/MST1. Isoform A interacts with MOAP1 and E4F1. Recruited to the TNFRSF1A and TNFRSF10A complexes in response to their respective cognate ligand, after internalization. Can self-associate. Isoform A interacts with RSSF5 and probably associates with HRAS1 via a RSSF1 isoform A-RSSF5 heterodimer. Part of a complex with MDM2, DAXX, RASSF1 and</p>

USP7. Isoform A interacts (via C-terminus) with DAXX (via N-terminus); the interaction is independent of MDM2 and TP53. Isoform C or isoform H interacts (via N-terminus) with DAXX. Isoform A interacts (via N-terminus) with MDM2 (via C-terminus); the interaction is independent of TP53.

Subcellular Location:

Nucleus. Predominantly nuclear and Cytoplasm.

Tissue Specificity:

Isoform A and isoform C are ubiquitously expressed in all tissues tested, however isoform A is absent in many corresponding cancer cell lines. Isoform B is mainly expressed in hematopoietic cells.

Similarity:

Contains 1 phorbol-ester/DAG-type zinc finger.
Contains 1 Ras-associating domain.
Contains 1 SARAH domain.

SWISS:

Q9NS23

Gene ID:

11186

Database links:

[Entrez Gene: 11186](#) Human

[Entrez Gene: 56289](#) Mouse

[Omim: 605082](#) Human

[SwissProt: Q9NS23](#) Human

[SwissProt: Q99MK9](#) Mouse

[Unigene: 476270](#) Human

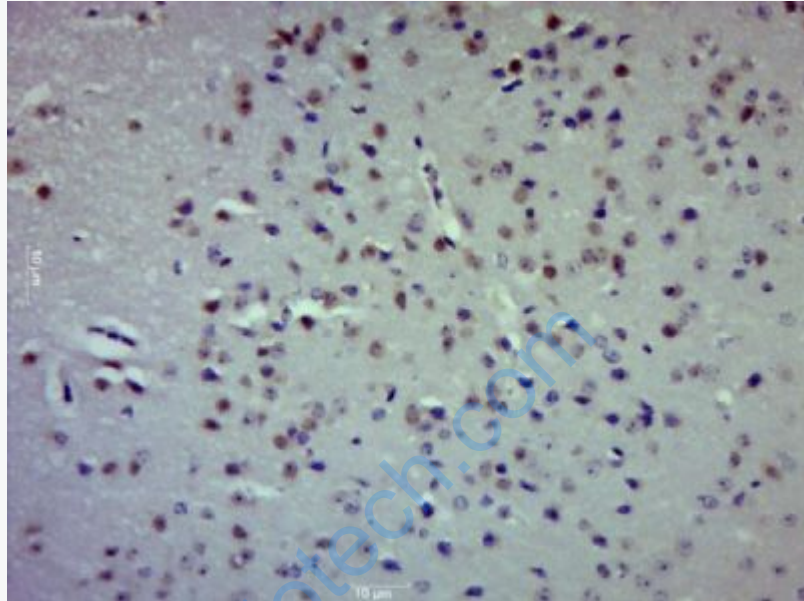
[Unigene: 12091](#) Mouse

Important Note:

This product as supplied is intended for research use only, not for use in human, therapeutic or diagnostic applications.

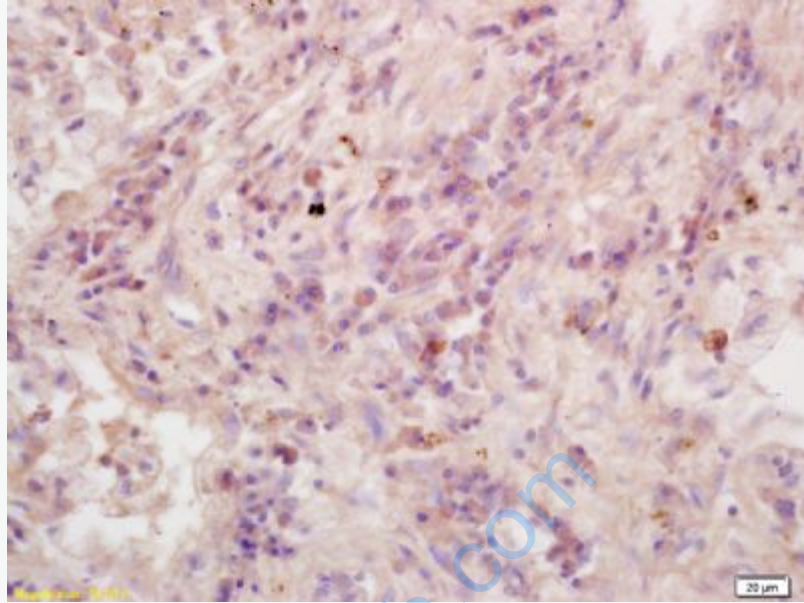
RASSF1A是一个Tumour抑制基因, RASSF1A蛋白的表达能显著抑制Tumour细胞

的生长和转移, 作为一种候选Tumour抑制基因参与Tumour的发生发展, 该基因的失活与其启动子区甲基化有关。该蛋白在恶性Tumour的发生发展中发挥重要作用。



Picture:

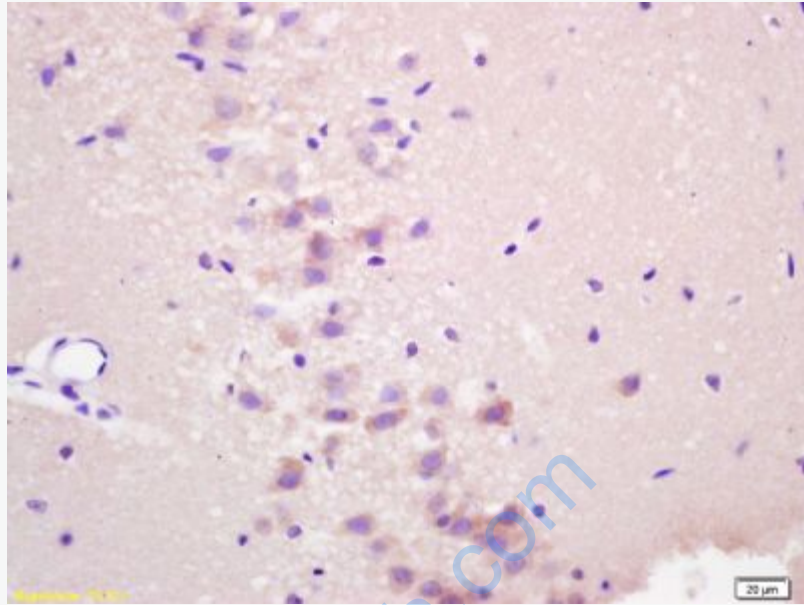
Paraformaldehyde-fixed, paraffin embedded (Mouse brain); Antigen retrieval by boiling in sodium citrate buffer (pH6.0) for 15min; Block endogenous peroxidase by 3% hydrogen peroxide for 20 minutes; Blocking buffer (normal goat serum) at 37°C for 30min; Antibody incubation with (RASSF1A) Polyclonal Antibody, Unconjugated (SL1234R) at 1:400 overnight at 4°C, followed by operating according to SP Kit(Rabbit) (sp-0023) instructions and DAB staining.



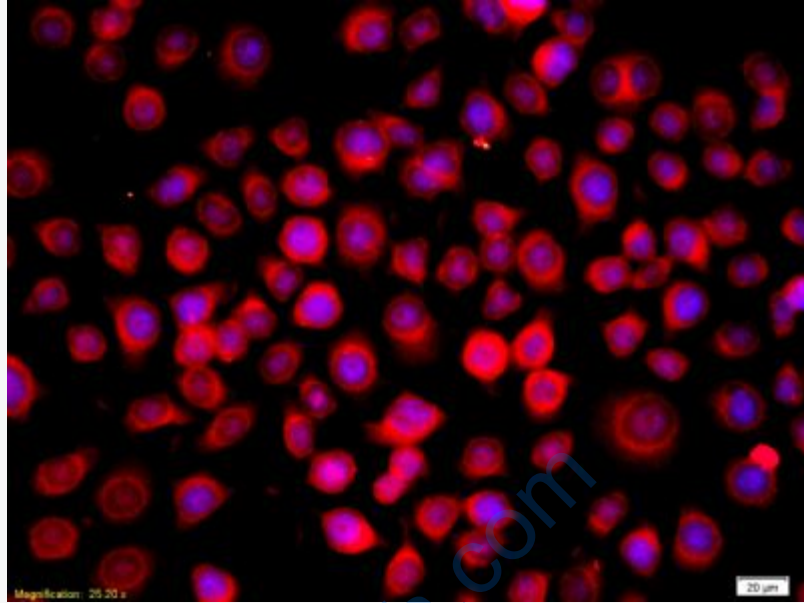
Tissue/cell: human lung carcinoma; 4% Paraformaldehyde-fixed and paraffin-embedded;

Antigen retrieval: citrate buffer (0.01M, pH 6.0), Boiling bathing for 15min; Block endogenous peroxidase by 3% Hydrogen peroxide for 30min; Blocking buffer (normal goat serum,C-0005) at 37°C for 20 min;

Incubation: Anti-RASSF1A Polyclonal Antibody, Unconjugated(SL1234R) 1:200, overnight at 4°C, followed by conjugation to the secondary antibody(SP-0023) and DAB(C-0010) staining



Tissue/cell: rat brain tissue; 4% Paraformaldehyde-fixed and paraffin-embedded;
Antigen retrieval: citrate buffer (0.01M, pH 6.0), Boiling bathing for 15min; Block endogenous peroxidase by 3% Hydrogen peroxide for 30min; Blocking buffer (normal goat serum,C-0005) at 37°C for 20 min;
Incubation: Anti-RASSF1A Polyclonal Antibody, Unconjugated(SL1234R) 1:200, overnight at 4°C, followed by conjugation to the secondary antibody(SP-0023) and DAB(C-0010) staining



Tissue/cell: Human oral squamous cell;4% Paraformaldehyde-fixed;
Blocking buffer (normal goat serum,C-0005) at 37°C for 20 min;
Incubation: Anti-RASSF1A Polyclonal Antibody, Unconjugated(SL1234R) 1:300,
overnight at 4°C; The secondary antibody was Goat Anti-Rabbit IgG, PE
conjugated(SL1234R)used at 1:200 dilution for 40 minutes at 37°C.
DAPI(5ug/ml,blue,C-0033) was used to stain the cell nuclei