



Rabbit Anti-GSC antibody

SL12352R

Product Name:	GSC
Chinese Name:	同源盒蛋白GSC抗体
Alias:	Goosecoid; goosecoid homeobox; GSC; GSC2; GSC_HUMAN; homeobox protein goosecoid-like; homeobox protein goosecoid-2; Homeobox protein goosecoid; GSC 2; GSCL; Homeobox protein goosecoid 2; Homeobox protein goosecoid like.
Organism Species:	Rabbit
Clonality:	Polyclonal
React Species:	Human,Mouse,Rat,Chicken,Dog,Pig,Cow,Rabbit,Sheep,
Applications:	ELISA=1:500-1000IHC-P=1:400-800IHC-F=1:400-800ICC=1:100-500IF=1:100-500 (Paraffin sections need antigen repair) not yet tested in other applications. optimal dilutions/concentrations should be determined by the end user.
Molecular weight:	28kDa
Cellular localization:	The nucleus
Form:	Lyophilized or Liquid
Concentration:	1mg/ml
immunogen:	KLH conjugated synthetic peptide derived from Human GSC:151-257/257
Lsotype:	IgG
Purification:	affinity purified by Protein A
Storage Buffer:	0.01M TBS(pH7.4) with 1% BSA, 0.03% Proclin300 and 50% Glycerol.
Storage:	Store at -20 °C for one year. Avoid repeated freeze/thaw cycles. The lyophilized antibody is stable at room temperature for at least one month and for greater than a year when kept at -20°C. When reconstituted in sterile pH 7.4 0.01M PBS or diluent of antibody the antibody is stable for at least two weeks at 2-4 °C.
PubMed:	PubMed
Product Detail:	Goosecoid is a homeodomain transcription factor with DNA binding specificity identical to that of the anterior morphogen 'bicoid' in Drosophila. During mouse embryogenesis, GSC influences development of the lower mandible and its associated musculature, including the tongue, the nasal cavity, and the nasal pits, as well as components of the inner ear and the external auditory meatus. The GSC gene encodes a member of the

bicoid subfamily of the paired (PRD) homeobox family of proteins.

Function:

Regulates chordin (CHRD). May play a role in spatial programming within discrete embryonic fields or lineage compartments during organogenesis. In concert with NKX3-2, plays a role in defining the structural components of the middle ear; required for the development of the entire tympanic ring.

Subcellular Location:

Nucleus.

Similarity:

Belongs to the paired homeobox family. Bicoid subfamily. Contains 1 homeobox DNA-binding domain.

SWISS:

O15499

Gene ID:

2928

Database links:

[Entrez Gene: 2928](#) Human

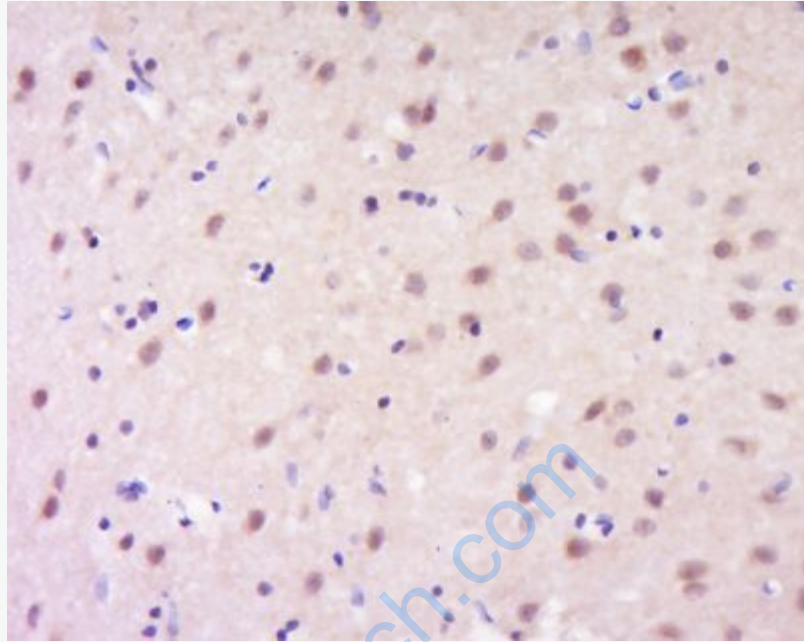
[Entrez Gene: 195333](#) Mouse

[SwissProt: O15499](#) Human

[SwissProt: P56916](#) Mouse

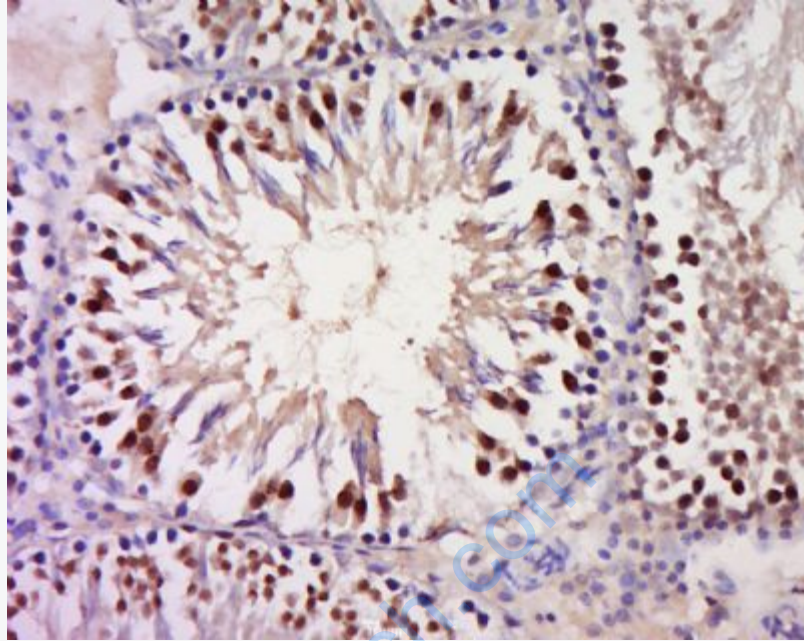
Important Note:

This product as supplied is intended for research use only, not for use in human, therapeutic or diagnostic applications.



Picture:

Tissue/cell: Rat brain tissue; 4% Paraformaldehyde-fixed and paraffin-embedded;
Antigen retrieval: citrate buffer (0.01M, pH 6.0), Boiling bathing for 15min; Block endogenous peroxidase by 3% Hydrogen peroxide for 30min; Blocking buffer (normal goat serum,C-0005) at 37°C for 20 min;
Incubation: Anti-GSC Polyclonal Antibody, Unconjugated(SL12352R) 1:500, overnight at 4°C, followed by conjugation to the secondary antibody(SP-0023) and DAB(C-0010) staining



Tissue/cell: Rat testis tissue; 4% Paraformaldehyde-fixed and paraffin-embedded;
Antigen retrieval: citrate buffer (0.01M, pH 6.0), Boiling bathing for 15min; Block endogenous peroxidase by 3% Hydrogen peroxide for 30min; Blocking buffer (normal goat serum,C-0005) at 37°C for 20 min;
Incubation: Anti-GSC Polyclonal Antibody, Unconjugated(SL12352R) 1:500, overnight at 4°C, followed by conjugation to the secondary antibody(SP-0023) and DAB(C-0010) staining