



Rabbit Anti-CHI3L2 antibody

SL12358R

Product Name:	CHI3L2
Chinese Name:	软骨细胞蛋白39抗体
Alias:	CH3L2_HUMAN; CHI3L2; Chitinase 3 like 2; Chitinase-3-like protein 2; Chondrocyte protein 39; OTTHUMP00000014028; YKL 39; YKL-39; YKL39.
Organism Species:	Rabbit
Clonality:	Polyclonal
React Species:	Human,
Applications:	WB=1:500-2000ELISA=1:500-1000IHC-P=1:400-800IHC-F=1:400-800ICC=1:100-500IF=1:100-500 (Paraffin sections need antigen repair) not yet tested in other applications. optimal dilutions/concentrations should be determined by the end user.
Molecular weight:	41kDa
Cellular localization:	Secretory protein
Form:	Lyophilized or Liquid
Concentration:	1mg/ml
immunogen:	KLH conjugated synthetic peptide derived from human YKL39/CHI3L2:121-220/390
Lsotype:	IgG
Purification:	affinity purified by Protein A
Storage Buffer:	0.01M TBS(pH7.4) with 1% BSA, 0.03% Proclin300 and 50% Glycerol.
Storage:	Store at -20 °C for one year. Avoid repeated freeze/thaw cycles. The lyophilized antibody is stable at room temperature for at least one month and for greater than a year when kept at -20°C. When reconstituted in sterile pH 7.4 0.01M PBS or diluent of antibody the antibody is stable for at least two weeks at 2-4 °C.
PubMed:	PubMed
Product Detail:	YKL-39 is a 390 amino acid cartilage protein that belongs to the chitinase family of chitin-fragmenting hydrolases. Highly expressed in chondrocytes (cartilage cells) and synoviocytes (fibroblastic cells that line joint cavities), YKL-39 binds glycan structures with high affinity. Although related to bacterial chitinases, YKL-39 lacks the characteristic glutamate active site and, thus, does not have enzymatic chitinase activity. Patients affected with rheumatoid arthritis (RA) have autoimmunity against YKL-39,

suggesting that YKL-39 is involved in osteoarthritic and/or rheumatoid joint disease. Additionally, YKL-39 is upregulated in early degenerative cartilage diseases (such as RA) and may be a marker of chondrocyte activation in these autoimmune conditions.

Function:

May bind glycan structure with high affinity, but not heparin. Has no chitotriosidase activity.

Subcellular Location:

Secreted.

Tissue Specificity:

Highest expression in chondrocytes, followed by synoviocytes, lung and heart. Not detected in spleen, pancreas, and liver. May also be expressed in developing brain and placenta.

Similarity:

Belongs to the glycosyl hydrolase 18 family.

SWISS:

Q15782

Gene ID:

1117

Database links:

[Entrez Gene: 1117](#) Human

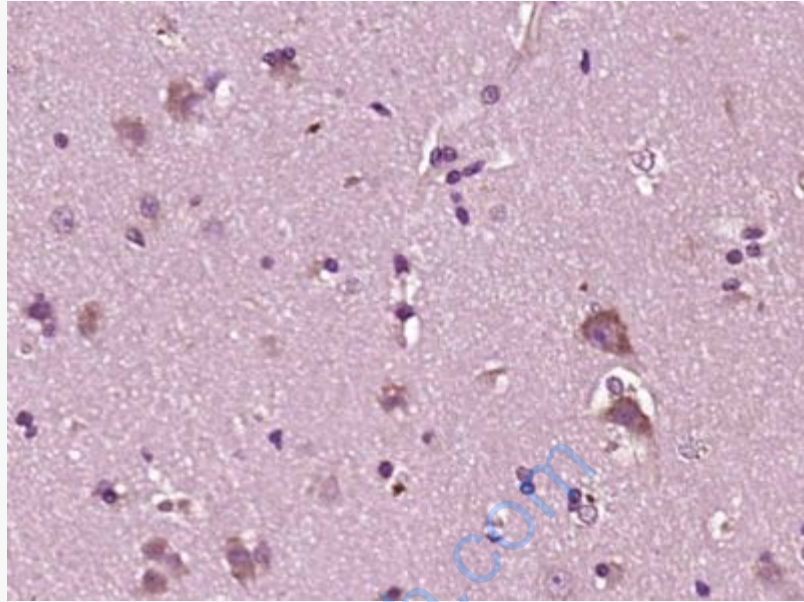
[Omim: 601526](#) Human

[SwissProt: Q15782](#) Human

[Unigene: 514840](#) Human

Important Note:

This product as supplied is intended for research use only, not for use in human, therapeutic or diagnostic applications.



Picture:

Paraformaldehyde-fixed, paraffin embedded (Human brain glioma); Antigen retrieval by boiling in sodium citrate buffer (pH6.0) for 15min; Block endogenous peroxidase by 3% hydrogen peroxide for 20 minutes; Blocking buffer (normal goat serum) at 37°C for 30min; Antibody incubation with (CHI3L2) Polyclonal Antibody, Unconjugated (SL12358R) at 1:400 overnight at 4°C, followed by operating according to SP Kit(Rabbit) (sp-0023) instructions and DAB staining.