



Rabbit Anti-Fibromodulin antibody

SL12362R

Product Name:	Fibromodulin
Chinese Name:	纤维调节蛋白抗体
Alias:	Collagen binding 59 kDa protein; Collagen-binding 59 kDa protein; Fibromodulin; Fibromodulin precursor; Fibromodulin proteoglycan; FM; FMOD; FMOD_HUMAN; Keratan sulfate proteoglycan fibromodulin; KSPG fibromodulin; SLRR2E.
Organism Species:	Rabbit
Clonality:	Polyclonal
React Species:	Human,Mouse,Rat,Sheep,
Applications:	ELISA=1:500-1000IHC-P=1:400-800IHC-F=1:400-800ICC=1:100-500IF=1:100-500 (Paraffin sections need antigen repair) not yet tested in other applications. optimal dilutions/concentrations should be determined by the end user.
Molecular weight:	41kDa
Cellular localization:	Extracellular matrixSecretory protein
Form:	Lyophilized or Liquid
Concentration:	1mg/ml
immunogen:	KLH conjugated synthetic peptide derived from human Fibromodulin:121-180/376
Lsotype:	IgG
Purification:	affinity purified by Protein A
Storage Buffer:	0.01M TBS(pH7.4) with 1% BSA, 0.03% Proclin300 and 50% Glycerol.
Storage:	Store at -20 °C for one year. Avoid repeated freeze/thaw cycles. The lyophilized antibody is stable at room temperature for at least one month and for greater than a year when kept at -20°C. When reconstituted in sterile pH 7.4 0.01M PBS or diluent of antibody the antibody is stable for at least two weeks at 2-4 °C.
PubMed:	PubMed
Product Detail:	Fibromodulin is a ubiquitous protein that is most prominent in articular cartilage, tendon, and ligament. The human Fibromodulin gene maps to chromosome 1q32 and encodes a 376 amino acid protein. Function:

Affects the rate of fibrils formation. May have a primary role in collagen fibrillogenesis.

Subunit:

Binds to type I and type II collagen (By similarity).

Subcellular Location:

Secreted, extracellular space, extracellular matrix.

Post-translational modifications:

Binds keratan sulfate chains.

Similarity:

Belongs to the small leucine-rich proteoglycan (SLRP) family.

SLRP class II subfamily.

Contains 11 LRR (leucine-rich) repeats.

Contains 1 LRRNT domain.

SWISS:

Q06828

Gene ID:

2331

Database links:

[Entrez Gene: 281168](#)Cow

[Entrez Gene: 2331](#)Human

[Entrez Gene: 14264](#)Mouse

[Entrez Gene: 64507](#)Rat

[Omim: 600245](#)Human

[SwissProt: P13605](#)Cow

[SwissProt: Q06828](#)Human

[SwissProt: P50608](#)Mouse

[SwissProt: P50609](#)Rat

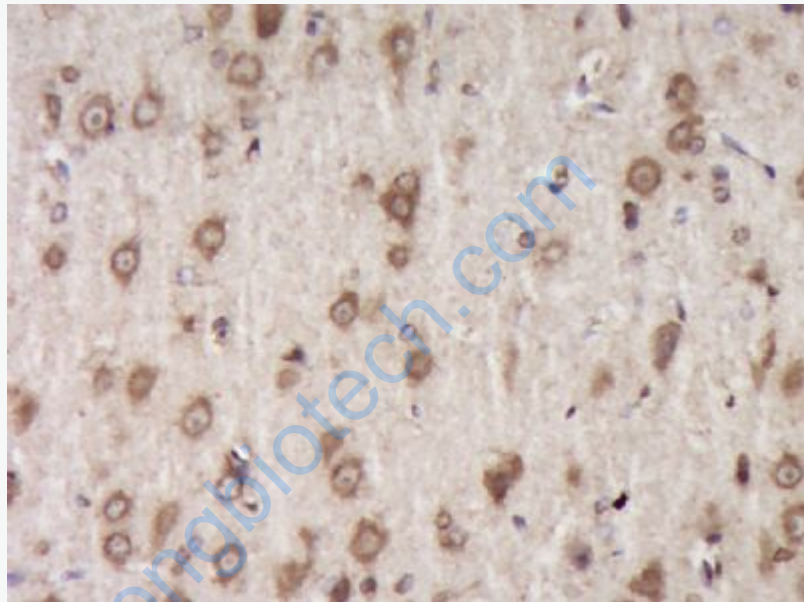
[Unigene: 519168](#)Human

[Unigene: 287146](#)Mouse

[Unigene: 8778Rat](#)

Important Note:

This product as supplied is intended for research use only, not for use in human, therapeutic or diagnostic applications.



Picture:

Paraformaldehyde-fixed, paraffin embedded (Rat brain); Antigen retrieval by boiling in sodium citrate buffer (pH6.0) for 15min; Block endogenous peroxidase by 3% hydrogen peroxide for 20 minutes; Blocking buffer (normal goat serum) at 37°C for 30min; Antibody incubation with (Fibromodulin) Polyclonal Antibody, Unconjugated (SL12362R) at 1:400 overnight at 4°C, followed by operating according to SP Kit(Rabbit) (sp-0023) instructions and DAB staining.