



## Rabbit Anti-Prickle antibody

SL12411R

<b>Product Name:</b>	Prickle
<b>Chinese Name:</b>	刺痛感蛋白抗体
<b>Alias:</b>	FLJ31627; FLJ31937; MGC138902; MGC138903; EPM1B; Prickle 1; Prickle homolog 1 (Drosophila); Prickle like protein 1; Prickle-like 1; Prickle1; REST-Interacting LIM Domain Protein; REST/NRSF interacting LIM domain protein 1; RILP; PRIC1 HUMAN.
<b>Organism Species:</b>	Rabbit
<b>Clonality:</b>	Polyclonal
<b>React Species:</b>	Human,Mouse,Rat,Dog,Pig,Cow,Horse,Sheep,
<b>Applications:</b>	ELISA=1:500-1000IHC-P=1:400-800IHC-F=1:400-800ICC=1:100-500IF=1:100-500 (Paraffin sections need antigen repair) not yet tested in other applications. optimal dilutions/concentrations should be determined by the end user.
<b>Molecular weight:</b>	94kDa
<b>Cellular localization:</b>	The nucleusThe cell membrane
<b>Form:</b>	Lyophilized or Liquid
<b>Concentration:</b>	1mg/ml
<b>immunogen:</b>	KLH conjugated synthetic peptide derived from human Prickle:551-650/831
<b>Lsotype:</b>	IgG
<b>Purification:</b>	affinity purified by Protein A
<b>Storage Buffer:</b>	0.01M TBS(pH7.4) with 1% BSA, 0.03% Proclin300 and 50% Glycerol.
<b>Storage:</b>	Store at -20 °C for one year. Avoid repeated freeze/thaw cycles. The lyophilized antibody is stable at room temperature for at least one month and for greater than a year when kept at -20°C. When reconstituted in sterile pH 7.4 0.01M PBS or diluent of antibody the antibody is stable for at least two weeks at 2-4 °C.
<b>PubMed:</b>	<a href="#">PubMed</a>
<b>Product Detail:</b>	Prickle1 is an 831 amino acid protein that contains one PET domain and three LIM zinc-binding domains and localizes to the cytoplasm, as well as to the nuclear membrane. Expressed at higher levels in placenta and at lower levels in liver, brain, kidney, lung and pancreas, Prickle1 is thought to function as a nuclear receptor that interacts with

NRSF, a silencer protein that binds the DNA sequence element NRSE (neuron-restrictive silencer element). Defects in the gene encoding Prickle1 are associated with autosomal recessive progressive myoclonic epilepsy-1B, which is characterized by quick jerks of the arms, shoulders or legs. The gene encoding Prickle1 maps to human chromosome 12, which encodes over 1,100 genes and comprises approximately 4.5% of the human genome.

**Function:**

Prickle is a LIM domain protein that appears to serve as a nuclear receptor for REST/NRSF, REST4, and possibly other transcription factors. The human protein is a 831 amino acid protein containing 3 N-terminal LIM domains and 3 C-terminal nuclear localization signals. It also contains 4 N-glycosylation sites, 2 PKA phosphorylation sites, and a C-terminal CIIS prenylation motif.

**Subunit:**

Interacts with REST.

**Subcellular Location:**

Nuclear Membrane

**Tissue Specificity:**

Expressed at highest levels in placenta and at lower levels in lung, liver, kidney and pancreas. Expressed in thalamus, hippocampus, cerebral cortex, and cerebellum (in neurons rather than glia).

**DISEASE:**

Defects in PRICKLE1 are the cause of progressive myoclonic epilepsy type 1B (EPM1B) [MIM:612437]. EPM1B is an autosomal recessive disorder characterized by myoclonus that progresses in severity over time, tonic-clonic seizures and ataxia. Defects in PRICKLE1 may be a cause of susceptibility to neural tube defects (NTD) [MIM:182940]. Congenital malformations of the central nervous system and adjacent structures related to defective neural tube closure during the first trimester of pregnancy. Failure of neural tube closure can occur at any level of the embryonic axis. Common NTD forms include anencephaly, myelomeningocele and spina bifida, which result from the failure of fusion in the cranial and spinal region of the neural tube. NTDs have a multifactorial etiology encompassing both genetic and environmental components.

**Similarity:**

Belongs to the prickle / espinas / testin family.

Contains 3 LIM zinc-binding domains.

Contains 1 PET domain.

**SWISS:**

Q96MT3

**Gene ID:**

144165

**Database links:**

[Entrez Gene: 144165](#)Human

[Entrez Gene: 106042](#)Mouse

[Entrez Gene: 315259](#)Rat

[Omim: 608500](#)Human

[SwissProt: Q14C83](#)Human

[SwissProt: Q96MT3](#)Human

[SwissProt: Q3U5C7](#)Mouse

[SwissProt: Q71QF9](#)Rat

[Unigene: 524348](#)Human

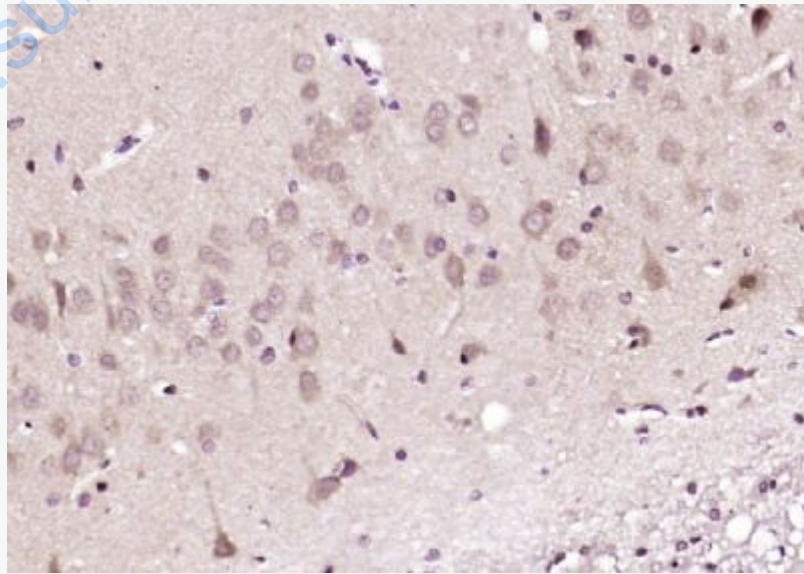
[Unigene: 150314](#)Mouse

[Unigene: 86665](#)Rat

**Important Note:**

This product as supplied is intended for research use only, not for use in human, therapeutic or diagnostic applications.

**Picture:**



Paraformaldehyde-fixed, paraffin embedded (rat brain); Antigen retrieval by boiling

in sodium citrate buffer (pH6.0) for 15min; Block endogenous peroxidase by 3% hydrogen peroxide for 20 minutes; Blocking buffer (normal goat serum) at 37°C for 30min; Antibody incubation with (Prickle) Polyclonal Antibody, Unconjugated (SL12411R) at 1:200 overnight at 4°C, followed by operating according to SP Kit(Rabbit) (sp-0023) instructions and DAB staining.

[www.sunlongbiotech.com](http://www.sunlongbiotech.com)