



Rabbit Anti-BAMBI antibody

SL12418R

Product Name:	BAMBI
Chinese Name:	Tumour转移抑制蛋白BAMBI抗体
Alias:	BAMBI; BAMBI_HUMAN; BMP and activin membrane bound inhibitor homolog; BMP and activin membrane-bound inhibitor homolog; NMA; Non metastatic gene A protein; Non-metastatic gene A protein; Putative transmembrane protein NMA.
文献引用 PubMed :	<p>Specific References(3) SL12418R has been referenced in 3 publications.</p> <p>[IF=2.08]Bai, Long, et al. "Identification and Expression Analyses of BAMBI Mediated by FSH in Swine Luteinizing Granulosa Cells." Theriogenology (2014).Pig. PubMed:25168722</p> <p>[IF=5.23]He, Yao, et al. "LPS/TLR4 Signaling Enhances TGF-β Response Through Downregulating BAMBI During Prostatic Hyperplasia." Scientific reports 6 (2016): 27051.IHC-P, IF(ICC);Human. PubMed:27243216</p> <p>[IF=1.56]Du, Jinghua, et al. "TLR4?dependent signaling pathway modulation: A novel mechanism by which pioglitazone protects against nutritional fibrotic steatohepatitis in mice." Molecular medicine reports 13.3 (2016): 2159-2166.WB;Mouse. PubMed:26781175</p>
Organism Species:	Rabbit
Clonality:	Polyclonal
React Species:	Human,Mouse,Rat,Dog,Pig,Cow,Rabbit,Sheep,Guinea Pig,
Applications:	WB=1:500-2000ELISA=1:500-1000IHC-P=1:400-800IHC-F=1:400-800ICC=1:100-500IF=1:100-500 (Paraffin sections need antigen repair) not yet tested in other applications. optimal dilutions/concentrations should be determined by the end user.

Molecular weight:	27kDa
Cellular localization:	The cell membrane
Form:	Lyophilized or Liquid
Concentration:	1mg/ml
immunogen:	KLH conjugated synthetic peptide derived from human BAMBI:101-200/260<Extracellular>
Lsotype:	IgG
Purification:	affinity purified by Protein A
Storage Buffer:	0.01M TBS(pH7.4) with 1% BSA, 0.03% Proclin300 and 50% Glycerol.
Storage:	Store at -20 °C for one year. Avoid repeated freeze/thaw cycles. The lyophilized antibody is stable at room temperature for at least one month and for greater than a year when kept at -20°C. When reconstituted in sterile pH 7.4 0.01M PBS or diluent of antibody the antibody is stable for at least two weeks at 2-4 °C.
PubMed:	PubMed
Product Detail:	<p>BAMBI is a membrane spanning glycoprotein that acts as a negative regulator of TGF-β signaling during development. The BAMBI family of proteins are related to type I TGF-β receptor family, however, BAMBI is a pseudoreceptor that lacks an intracellular serine/threonine kinase domain. BAMBI transcription regulation is under the influence of β-catenin, BMP, smad3 and smad4. BAMBI expression can increase in colorectal and hepatocellular carcinomas relative to non-cancerous tissues. BAMBI is expressed at high levels during odontogenesis. BAMBI is coexpressed with Bmp-4 during early Xenopus embryogenesis and can be detected in poorly metastatic human melanoma cell lines.</p> <p>Function: Negatively regulates TGF-beta signaling.</p> <p>Subcellular Location: Membrane.</p> <p>Tissue Specificity: High expression in kidney medulla, placenta and spleen; low in kidney cortex, liver, prostate and gut. Not expressed in normal skin, expression is high in melanocytes and in 3 out of 11 melanoma metastases tested.</p> <p>Similarity: Belongs to the BAMBI family.</p> <p>SWISS: Q13145</p> <p>Gene ID: 25805</p> <p>Database links:</p>

[Entrez Gene: 25805](#)Human

[Entrez Gene: 68010](#)Mouse

[Entrez Gene: 449001](#)Pig

[Entrez Gene: 83837](#)Rat

[Oimim: 604444](#)Human

[SwissProt: Q13145](#)Human

[SwissProt: Q9D0L6](#)Mouse

[SwissProt: Q91XN4](#)Rat

[Unigene: 533336](#)Human

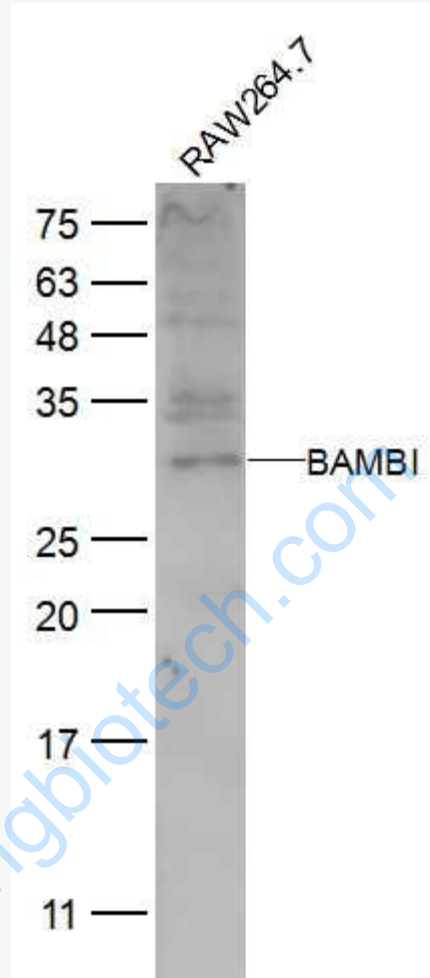
[Unigene: 284863](#)Mouse

[Unigene: 25267](#)Rat

Important Note:

This product as supplied is intended for research use only, not for use in human, therapeutic or diagnostic applications.

Picture:



Sample:

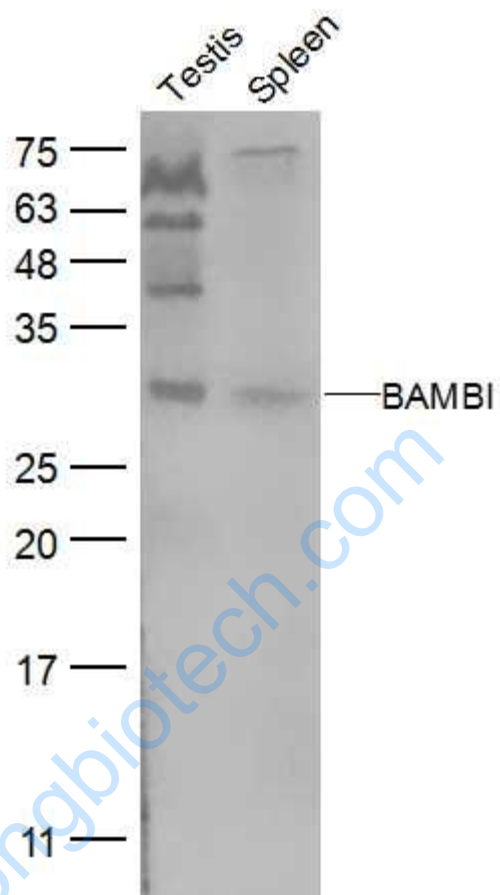
RAW264.7 (Mouse) CellLysate at 30 ug

Primary: Anti-BAMBI (SL12418R) at 1/500 dilution

Secondary: IRDye800CW Goat Anti-Rabbit IgG at 1/20000 dilution

Predicted band size: 27 kD

Observed band size: 30 kD



Sample:

Testis (Mouse) Lysate at 40 ug

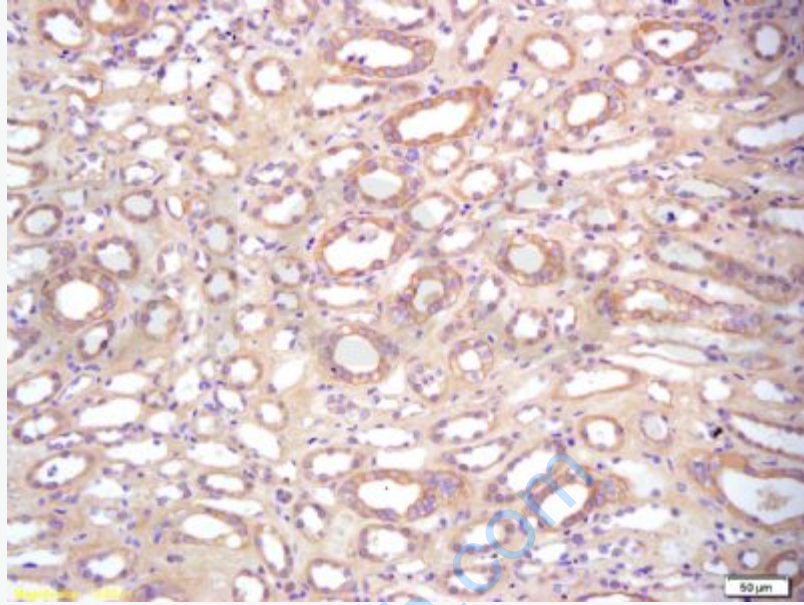
Spleen (Mouse) Lysate at 40 ug

Primary: Anti-BAMBI (SL12418R) at 1/500 dilution

Secondary: IRDye800CW Goat Anti-Rabbit IgG at 1/20000 dilution

Predicted band size: 27 kD

Observed band size: 30 kD



Tissue/cell: human kidney tissue; 4% Paraformaldehyde-fixed and paraffin-embedded;

Antigen retrieval: citrate buffer (0.01M, pH 6.0), Boiling bathing for 15min; Block endogenous peroxidase by 3% Hydrogen peroxide for 30min; Blocking buffer (normal goat serum,C-0005) at 37°C for 20 min;

Incubation: Anti-BAMBI Polyclonal Antibody, Unconjugated(SL12418R) 1:200, overnight at 4°C, followed by conjugation to the secondary antibody(SP-0023) and DAB(C-0010) staining