



Rabbit Anti-CAPRIN2 antibody

SL12423R

Product Name:	CAPRIN2
Chinese Name:	胃癌多药耐药相关蛋白
Alias:	C1q domain-containing protein 1; C1QDC1; CAPR2_HUMAN; Caprin family member 2; Caprin-2; caprin2; Cytoplasmic activation/proliferation-associated protein 2; EEG 1; EEG1; Gastric cancer multidrug resistance-associated protein; KIAA1873; Protein EEG-1; RNA granule protein 140; RNG140.
Organism Species:	Rabbit
Clonality:	Polyclonal
React Species:	Human,Mouse,Rat,Chicken,Pig,Horse,Sheep,
Applications:	WB=1:500-2000ELISA=1:500-1000IHC-P=1:400-800IHC-F=1:400-800ICC=1:100-500IF=1:100-500 (Paraffin sections need antigen repair) not yet tested in other applications. optimal dilutions/concentrations should be determined by the end user.
Molecular weight:	126kDa
Cellular localization:	cytoplasmic
Form:	Lyophilized or Liquid
Concentration:	1mg/ml
immunogen:	KLH conjugated synthetic peptide derived from human CAPRIN2:101-200/1127
Lsotype:	IgG
Purification:	affinity purified by Protein A
Storage Buffer:	0.01M TBS(pH7.4) with 1% BSA, 0.03% Proclin300 and 50% Glycerol.
Storage:	Store at -20 °C for one year. Avoid repeated freeze/thaw cycles. The lyophilized antibody is stable at room temperature for at least one month and for greater than a year when kept at -20°C. When reconstituted in sterile pH 7.4 0.01M PBS or diluent of antibody the antibody is stable for at least two weeks at 2-4 °C.
PubMed:	PubMed
Product Detail:	Caprin2 is 1127 amino acid highly conserved protein that is ubiquitously expressed with highest levels of expression in brain and spleen. Caprin2 stabilizes cytosolic β -catenin and enhances LEF-1 dependent reporter gene activity as well as the expression of Wnt target genes in mammalian cells. Caprin2 promotes LRP5/6 phosphorylation by GSK-3

and enhances the interaction between Axin and LRP5/6. It is suggested that Caprin2 functions as a proapoptotic inhibitor of the cell cycle. Nine isoforms of Caprin2 exist due to alternative splicing events.

Function:

May regulate the transport and translation of mRNAs, modulating for instance the expression of proteins involved in synaptic plasticity in neurons. Involved in regulation of growth as erythroblasts shift from a highly proliferative state towards their terminal phase of differentiation. May be involved in apoptosis.

Subcellular Location:

Cytoplasm; Mitochondrion. Colocalizes with aggregated mitochondria and Mitochondrion. Cytoplasm. Expressed throughout the cytoplasm.

Tissue Specificity:

Detected in all tissues tested with highest levels of expression in brain and spleen.

Similarity:

Belongs to the caprin family.
Contains 1 C1q domain.

SWISS:

Q6IMN6

Gene ID:

65981

Database links:

[Entrez Gene: 65981](#)Human

[Omim: 610375](#)Human

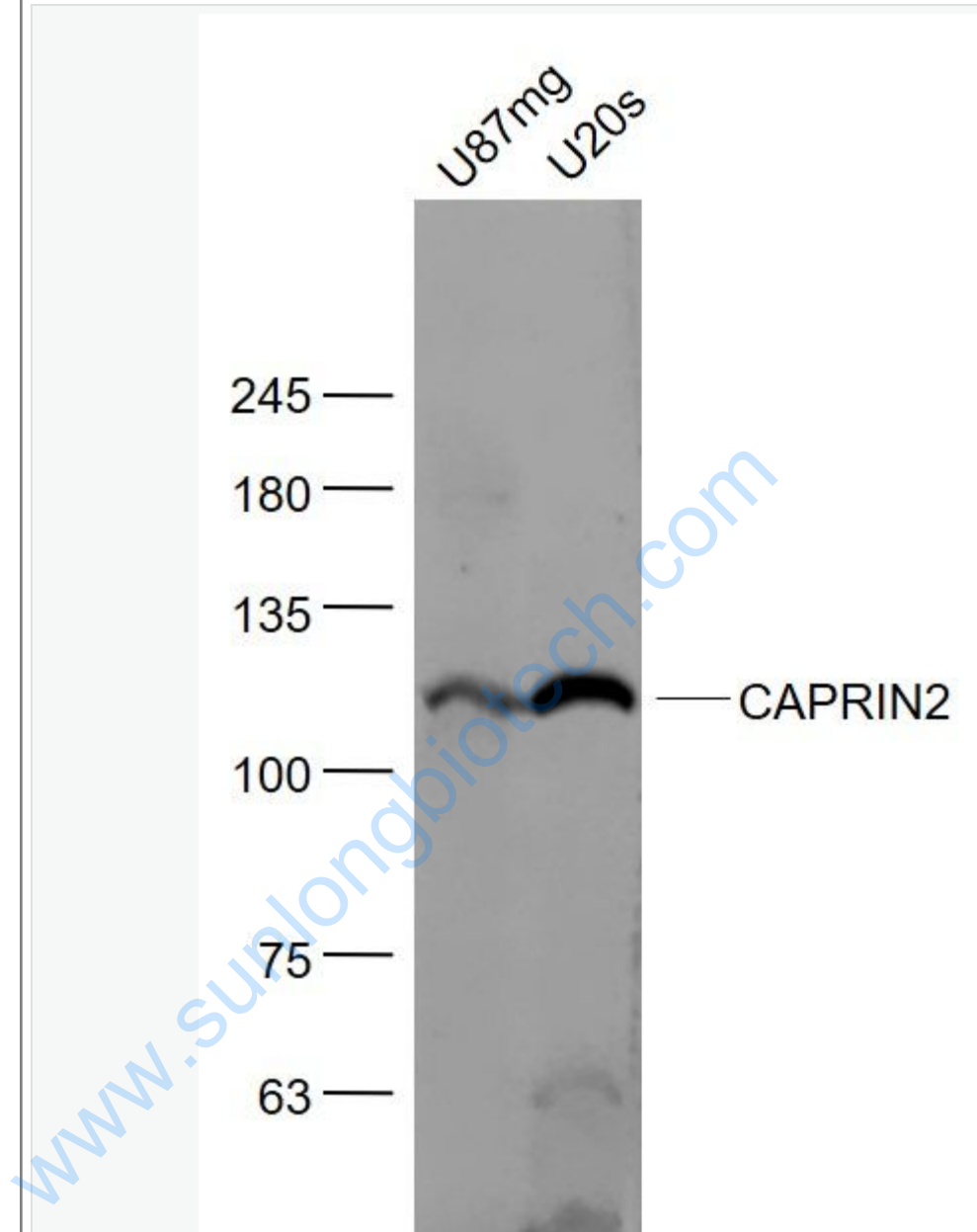
[SwissProt: Q6IMN6](#)Human

[Unigene: 234355](#)Human

Important Note:

This product as supplied is intended for research use only, not for use in human, therapeutic or diagnostic applications.

Picture:



Sample:

U87MG(Human) Cell Lysate at 30 ug

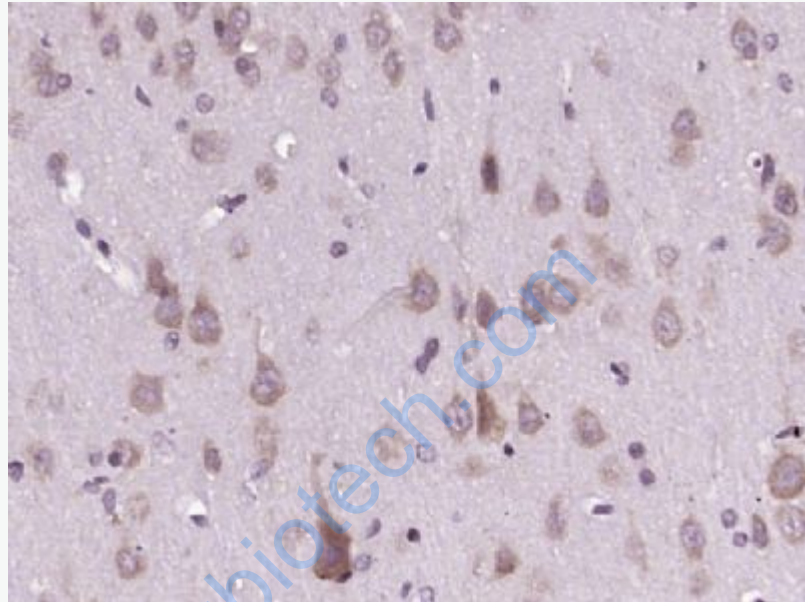
U2OS(Human) Cell Lysate at 30 ug

Primary: Anti- CAPRIN2 (SL12423R) at 1/1000 dilution

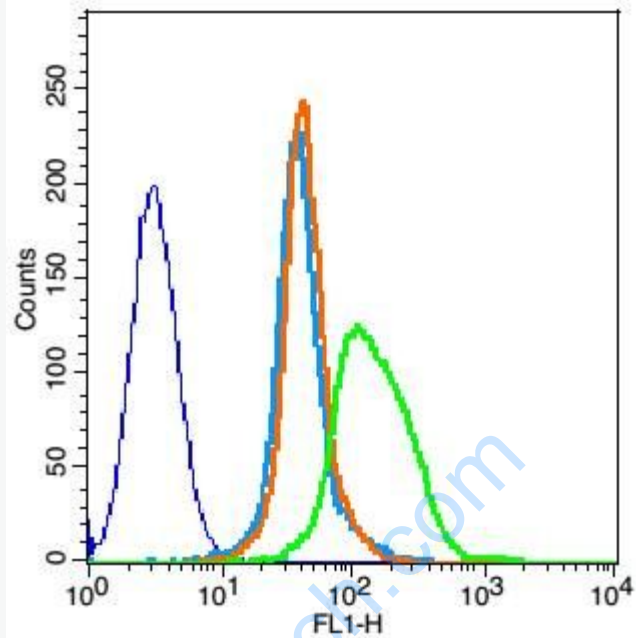
Secondary: IRDye800CW Goat Anti-Rabbit IgG at 1/20000 dilution

Predicted band size: 126 kD

Observed band size: 126 kD



Paraformaldehyde-fixed, paraffin embedded (rat brain tissue); Antigen retrieval by boiling in sodium citrate buffer (pH6.0) for 15min; Block endogenous peroxidase by 3% hydrogen peroxide for 20 minutes; Blocking buffer (normal goat serum) at 37°C for 30min; Antibody incubation with (CAPRIN2) Polyclonal Antibody, Unconjugated (SL12423R) at 1:400 overnight at 4°C, followed by operating according to SP Kit(Rabbit) (sp-0023) instructions and DAB staining.



Blank control: Mouse spleen cells (fixed with 2% paraformaldehyde (10 min) , then permeabilized with 90% ice-cold methanol for 30 min on ice).

Primary Antibody: Rabbit Anti-CAPRIN2 antibody(SL12423R), Dilution: 5 μ g in 100 μ L 1X PBS containing 0.5% BSA;

Isotype Control Antibody: Rabbit IgG(orange) ,used under the same conditions);

Secondary Antibody: Goat anti-rabbit IgG-FITC(white blue), Dilution: 1:200 in 1 X PBS containing 0.5% BSA.