



## Rabbit Anti-Caseine Kinase 1 alpha antibody

SL12427R

<b>Product Name:</b>	Caseine Kinase 1 alpha
<b>Chinese Name:</b>	酪蛋白激酶casein kinase I $\alpha$ 抗体
<b>Alias:</b>	Casein kinase 1 alpha 1; Casein kinase I isoform alpha; CK1; CK1A; CKI alpha; CKI-alpha; CKIa; Clock regulator kinase; Csnk1a1; Down regulated in lung cancer; HLCDGP1; KC1A_HUMAN; PRO2975.
<b>Organism Species:</b>	Rabbit
<b>Clonality:</b>	Polyclonal
<b>React Species:</b>	Human,Mouse,Rat,Cow,Horse,Rabbit,Sheep,
<b>Applications:</b>	WB=1:500-2000ELISA=1:500-1000IHC-P=1:400-800IHC-F=1:400-800ICC=1:100-500IF=1:100-500 (Paraffin sections need antigen repair) not yet tested in other applications. optimal dilutions/concentrations should be determined by the end user.
<b>Molecular weight:</b>	39kDa
<b>Cellular localization:</b>	The nucleuscytoplasmic
<b>Form:</b>	Lyophilized or Liquid
<b>Concentration:</b>	1mg/ml
<b>immunogen:</b>	KLH conjugated synthetic peptide derived from human CK1A/Caseine Kinase 1 alpha:221-337/337
<b>Lsotype:</b>	IgG
<b>Purification:</b>	affinity purified by Protein A
<b>Storage Buffer:</b>	0.01M TBS(pH7.4) with 1% BSA, 0.03% Proclin300 and 50% Glycerol.
<b>Storage:</b>	Store at -20 °C for one year. Avoid repeated freeze/thaw cycles. The lyophilized antibody is stable at room temperature for at least one month and for greater than a year when kept at -20°C. When reconstituted in sterile pH 7.4 0.01M PBS or diluent of antibody the antibody is stable for at least two weeks at 2-4 °C.
<b>PubMed:</b>	<a href="#">PubMed</a>
<b>Product Detail:</b>	Casein kinases are operationally defined by their preferential utilization of acidic proteins such as caseins as substrates. It can phosphorylate a large number of proteins. Participates in Wnt signaling. Phosphorylates CTNNB1 at 'Ser-45'. May play a role in segregating chromosomes during mitosis.

**Function:**

Casein kinases are operationally defined by their preferential utilization of acidic proteins such as caseins as substrates. It can phosphorylate a large number of proteins. Participates in Wnt signaling. Phosphorylates CTNNB1 at 'Ser-45'. May play a role in segregating chromosomes during mitosis.

**Subunit:**

Monomer. Interacts with the Axin complex. Interacts with TUT1, leading to TUT1 phosphorylation.

**Subcellular Location:**

Cytoplasm. Cytoplasm, cytoskeleton, centrosome. Chromosome, centromere, kinetochore. Nucleus speckle. Note=Localizes to the centrosome in interphase cells, and to kinetochore fibers during mitosis.

**Similarity:**

Belongs to the protein kinase superfamily. CK1 Ser/Thr protein kinase family. Casein kinase I subfamily. Contains 1 protein kinase domain.

**SWISS:**

P48729

**Gene ID:**

1452

**Database links:**

[Entrez Gene: 1452](#)Human

[Entrez Gene: 93687](#)Mouse

[Entrez Gene: 113927](#)Rat

[Omim: 600505](#)Human

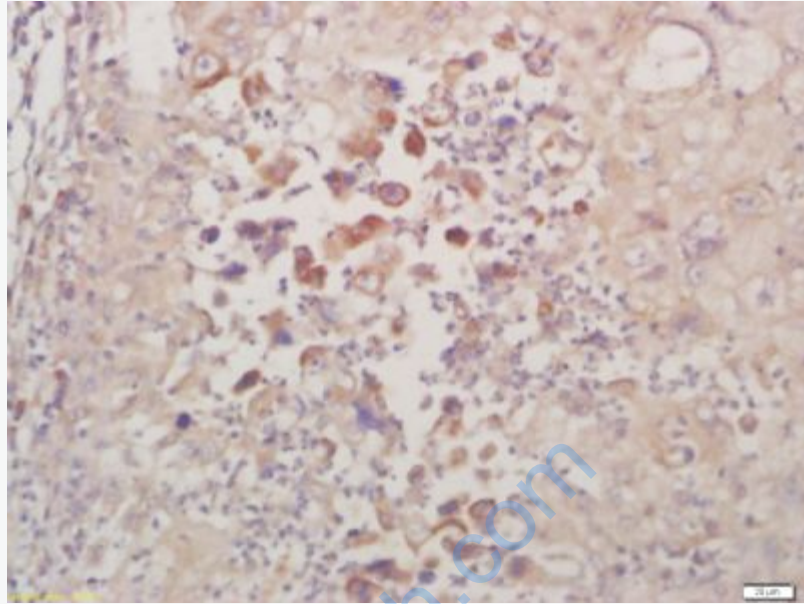
[SwissProt: P48729](#)Human

[SwissProt: Q8BK63](#)Mouse

[SwissProt: P97633](#)Rat

**Important Note:**

This product as supplied is intended for research use only, not for use in human, therapeutic or diagnostic applications.



**Picture:**

Tissue/cell: human lung carcinoma; 4% Paraformaldehyde-fixed and paraffin-embedded;

Antigen retrieval: citrate buffer ( 0.01M, pH 6.0 ), Boiling bathing for 15min; Block endogenous peroxidase by 3% Hydrogen peroxide for 30min; Blocking buffer (normal goat serum,C-0005) at 37°C for 20 min;

Incubation: Anti-Casein Kinase 1 alpha Polyclonal Antibody,

Unconjugated(SL12427R) 1:200, overnight at 4°C, followed by conjugation to the secondary antibody(SP-0023) and DAB(C-0010) staining