



Rabbit Anti-phospho-Caseine Kinase 1 alpha(Tyr294) antibody

SL12428R

Product Name:	phospho-Caseine Kinase 1 alpha(Tyr294)
Chinese Name:	磷酸化酪蛋白激酶casein kinase I α 抗体
Alias:	Caseine Kinase 1 alpha (phospho Y294); p-CK1A (phospho Y294); Casein kinase 1 alpha 1; Casein kinase I isoform alpha; CK1; CK1A; CKI alpha; CKI-alpha; CK1a; Clock regulator kinase; Csnk1a1; Down regulated in lung cancer; HLCDGP1; KC1A_HUMAN; PRO2975.
Organism Species:	Rabbit
Clonality:	Polyclonal
React Species:	Human,Mouse,Rat,Chicken,Rabbit,Sheep,
Applications:	WB=1:500-2000ELISA=1:500-1000IHC-P=1:400-800IHC-F=1:400-800ICC=1:100-500IF=1:100-500 (Paraffin sections need antigen repair) not yet tested in other applications. optimal dilutions/concentrations should be determined by the end user.
Molecular weight:	39kDa
Cellular localization:	The nucleuscytoplasmic
Form:	Lyophilized or Liquid
Concentration:	1mg/ml
immunogen:	KLH conjugated synthesised phosphopeptide derived from human Caseine Kinase 1 alpha around the phosphorylation site of Tyr294 :YD(p-Y)TF
Lsotype:	IgG
Purification:	affinity purified by Protein A
Storage Buffer:	0.01M TBS(pH7.4) with 1% BSA, 0.03% Proclin300 and 50% Glycerol.
Storage:	Store at -20 °C for one year. Avoid repeated freeze/thaw cycles. The lyophilized antibody is stable at room temperature for at least one month and for greater than a year when kept at -20°C. When reconstituted in sterile pH 7.4 0.01M PBS or diluent of antibody the antibody is stable for at least two weeks at 2-4 °C.
PubMed:	PubMed

Casein kinases are operationally defined by their preferential utilization of acidic proteins such as caseins as substrates. It can phosphorylate a large number of proteins. Participates in Wnt signaling. Phosphorylates CTNNB1 at 'Ser-45'. May play a role in segregating chromosomes during mitosis.

Function:

Casein kinases are operationally defined by their preferential utilization of acidic proteins such as caseins as substrates. It can phosphorylate a large number of proteins. Participates in Wnt signaling. Phosphorylates CTNNB1 at 'Ser-45'. May play a role in segregating chromosomes during mitosis.

Subunit:

Monomer. Interacts with the Axin complex. Interacts with TUT1, leading to TUT1 phosphorylation.

Subcellular Location:

Cytoplasm. Cytoplasm, cytoskeleton, centrosome. Chromosome, centromere, kinetochore. Nucleus speckle. Note=Localizes to the centrosome in interphase cells, and to kinetochore fibers during mitosis.

Product Detail:

Similarity:

Belongs to the protein kinase superfamily. CK1 Ser/Thr protein kinase family. Casein kinase I subfamily. Contains 1 protein kinase domain.

SWISS:

P48729

Gene ID:

1452

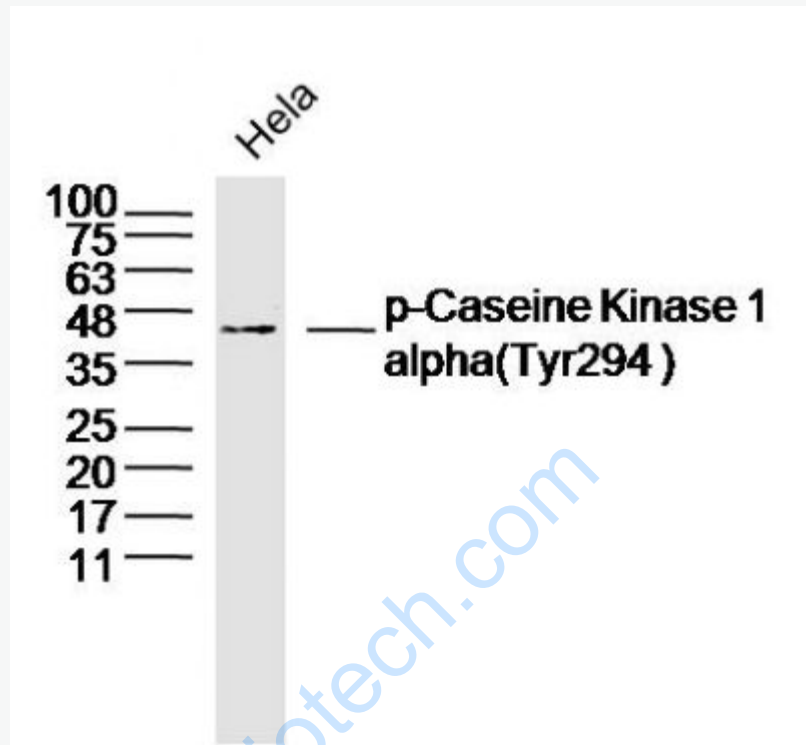
Database links:

UniProtKB/Swiss-Prot: P48729.2

Important Note:

This product as supplied is intended for research use only, not for use in human, therapeutic or diagnostic applications.

Picture:



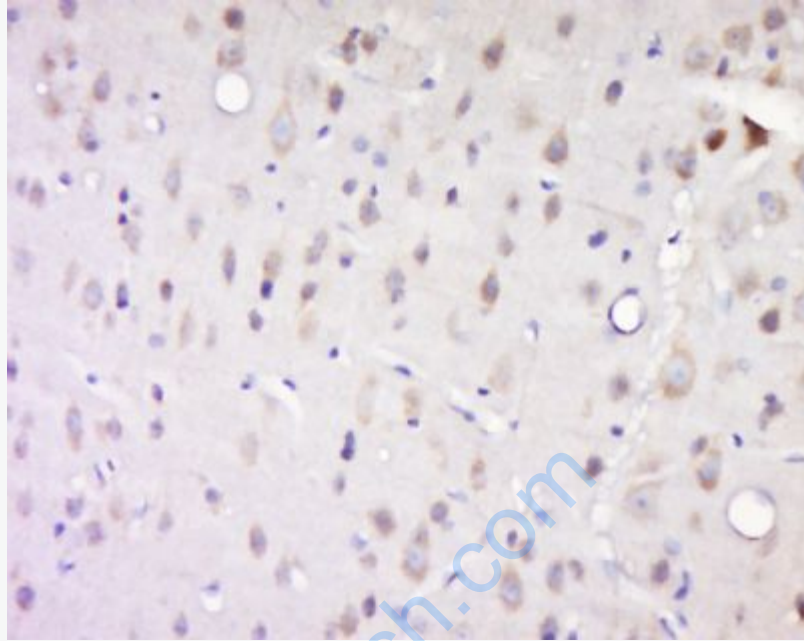
Sample: HeLa Cell (Human) Lysate at 40 ug

Primary: Anti-phospho-Caseine Kinase 1 alpha(Tyr294) (SL12428R) at 1/300 dilution

Secondary: IRDye800CW Goat Anti-Rabbit IgG at 1/20000 dilution

Predicted band size: 39 kD

Observed band size: 39 kD



Tissue/cell: rat brain tissue; 4% Paraformaldehyde-fixed and paraffin-embedded;
Antigen retrieval: citrate buffer (0.01M, pH 6.0), Boiling bathing for 15min; Block endogenous peroxidase by 3% Hydrogen peroxide for 30min; Blocking buffer (normal goat serum,C-0005) at 37°C for 20 min;
Incubation: Anti-phospho-Casein Kinase 1 alpha (Tyr294) Polyclonal Antibody, Unconjugated(SL12428R) 1:500, overnight at 4°C, followed by conjugation to the secondary antibody(SP-0023) and DAB(C-0010) staining