



Rabbit Anti-DAAM2 antibody

SL12430R

Product Name:	DAAM2
Chinese Name:	形态发生紊乱关联激活因子2抗体
Alias:	DAAM2; DAAM2_HUMAN; Disheveled-associated activator of morphogenesis 2; dishevelled associated activator of morphogenesis 2; dJ90A20A.1; KIAA0381; MGC90515; RP1 278E11.1.
Organism Species:	Rabbit
Clonality:	Polyclonal
React Species:	Human,Mouse,Rat,Dog,Pig,Cow,Horse,Rabbit,Sheep,
Applications:	ELISA=1:500-1000IHC-P=1:400-800IHC-F=1:400-800ICC=1:100-500IF=1:100-500 (Paraffin sections need antigen repair) not yet tested in other applications. optimal dilutions/concentrations should be determined by the end user.
Molecular weight:	123kDa
Cellular localization:	Extracellular matrix
Form:	Lyophilized or Liquid
Concentration:	1mg/ml
immunogen:	KLH conjugated synthetic peptide derived from human DAAM2:161-260/1068
Lsotype:	IgG
Purification:	affinity purified by Protein A
Storage Buffer:	0.01M TBS(pH7.4) with 1% BSA, 0.03% Proclin300 and 50% Glycerol.
Storage:	Store at -20 °C for one year. Avoid repeated freeze/thaw cycles. The lyophilized antibody is stable at room temperature for at least one month and for greater than a year when kept at -20°C. When reconstituted in sterile pH 7.4 0.01M PBS or diluent of antibody the antibody is stable for at least two weeks at 2-4 °C.
PubMed:	PubMed
Product Detail:	DAAM2 is a widely expressed 1,068 amino acid protein that contains one DAD domain, one FH1 domain, one FH2 domain and one GBD domain, through which it may play a role in Wnt/Frizzled-associated signaling events. The gene encoding DAAM2 maps to human chromosome 6, which contains 170 million base pairs and comprises nearly 6% of the human genome. Deletion of a portion of the q arm of

chromosome 6 is associated with early onset intestinal cancer, suggesting the presence of a cancer susceptibility locus. Additionally, Porphyria cutanea tarda, Parkinson's disease, Stickler syndrome and a susceptibility to bipolar disorder are all associated with genes that map to chromosome 6.

Tissue Specificity:

Expressed in most tissues examined.

Similarity:

Belongs to the formin homology family.

Contains 1 DAD (diaphanous autoregulatory) domain.

Contains 1 FH1 (formin homology 1) domain.

Contains 1 FH2 (formin homology 2) domain.

Contains 1 GBD/FH3 (Rho GTPase-binding/formin homology 3) domain.

SWISS:

Q86T65

Gene ID:

23500

Database links:

[Entrez Gene: 23500](#)Human

[Entrez Gene: 76441](#)Mouse

[Entrez Gene: 316201](#)Rat

[Omim: 606627](#)Human

[SwissProt: Q86T65](#)Human

[SwissProt: Q80U19](#)Mouse

[Unigene: 357128](#)Human

[Unigene: 718492](#)Human

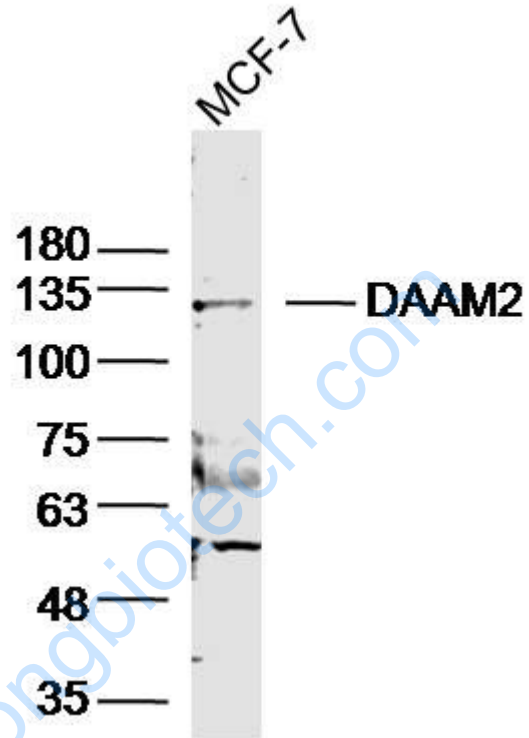
[Unigene: 211275](#)Mouse

[Unigene: 129337](#)Rat

Important Note:

This product as supplied is intended for research use only, not for use in human, therapeutic or diagnostic applications.

Picture:



Sample: MCF-7 (Human) cell Lysate at 40 ug

Primary: Anti-DAAM2(SL12430R) at 1/300 dilution

Secondary: IRDye800CW Goat Anti-Rabbit IgG at 1/20000 dilution

Predicted band size: 123kD

Observed band size: 123kD