



## Rabbit Anti-phospho-APC1 (Ser688) antibody

SL12482R

<b>Product Name:</b>	phospho-APC1 (Ser688)
<b>Chinese Name:</b>	磷酸化细胞周期末期促进复合蛋白APC1抗体
<b>Alias:</b>	phospho-ANAPC1(Ser688); Apc1 (phospho S688); ANAPC 1; ANAPC1; Anaphase promoting complex subunit 1; anaphase-promoting complex 1 (meiotic checkpoint regulator); Anaphase-promoting complex subunit 1; Apc 1; APC1; APC1_HUMAN; Cyclosome subunit 1; MCPR; Meiotic checkpoint regulator; Mitotic checkpoint regulator; Protein Tsg 24; Protein Tsg24; Testis-specific gene 24 protein; TSG 24; TSG24.
<b>Organism Species:</b>	Rabbit
<b>Clonality:</b>	Polyclonal
<b>React Species:</b>	Human,Mouse,Rat,Chicken,
<b>Applications:</b>	ELISA=1:500-1000IHC-P=1:400-800IHC-F=1:400-800ICC=1:100-500IF=1:100-500 (Paraffin sections need antigen repair) not yet tested in other applications. optimal dilutions/concentrations should be determined by the end user.
<b>Molecular weight:</b>	215kDa
<b>Cellular localization:</b>	The nucleus
<b>Form:</b>	Lyophilized or Liquid
<b>Concentration:</b>	1mg/ml
<b>immunogen:</b>	KLH conjugated synthesised phosphopeptide derived from human APC1 around the phosphorylation site of Ser688:SL(p-S)PV
<b>Lsotype:</b>	IgG
<b>Purification:</b>	affinity purified by Protein A
<b>Storage Buffer:</b>	0.01M TBS(pH7.4) with 1% BSA, 0.03% Proclin300 and 50% Glycerol.
<b>Storage:</b>	Store at -20 °C for one year. Avoid repeated freeze/thaw cycles. The lyophilized antibody is stable at room temperature for at least one month and for greater than a year when kept at -20°C. When reconstituted in sterile pH 7.4 0.01M PBS or diluent of antibody the antibody is stable for at least two weeks at 2-4 °C.
<b>PubMed:</b>	<a href="#">PubMed</a>

This gene encodes a subunit of the anaphase-promoting complex. This complex is an E3 ubiquitin ligase that regulates progression through the metaphase to anaphase portion of the cell cycle by ubiquitinating proteins which targets them for degradation. [provided by RefSeq, Dec 2011].

**Function:**

Component of the anaphase promoting complex/cyclosome (APC/C), a cell cycle-regulated E3 ubiquitin ligase that controls progression through mitosis and the G1 phase of the cell cycle. The APC/C complex acts by mediating ubiquitination and subsequent degradation of target proteins: it mainly mediates the formation of 'Lys-11'-linked polyubiquitin chains and, to a lower extent, the formation of 'Lys-48'- and 'Lys-63'-linked polyubiquitin chains.

**Subunit:**

The APC/C is composed of at least 12 subunits.

**Post-translational modifications:**

Phosphorylated. Phosphorylation on Ser-355 occurs specifically during mitosis.

**Similarity:**

Belongs to the APC1 family.  
Contains 4 PC repeats.

**Product Detail:**

**SWISS:**

Q9H1A4

**Gene ID:**

64682

**Database links:**

[Entrez Gene: 64682](#) Human

[Entrez Gene: 535565](#) Cow

[Entrez Gene: 475750](#) Dog

[Entrez Gene: 17222](#) Mouse

[Omim: 608473](#) Human

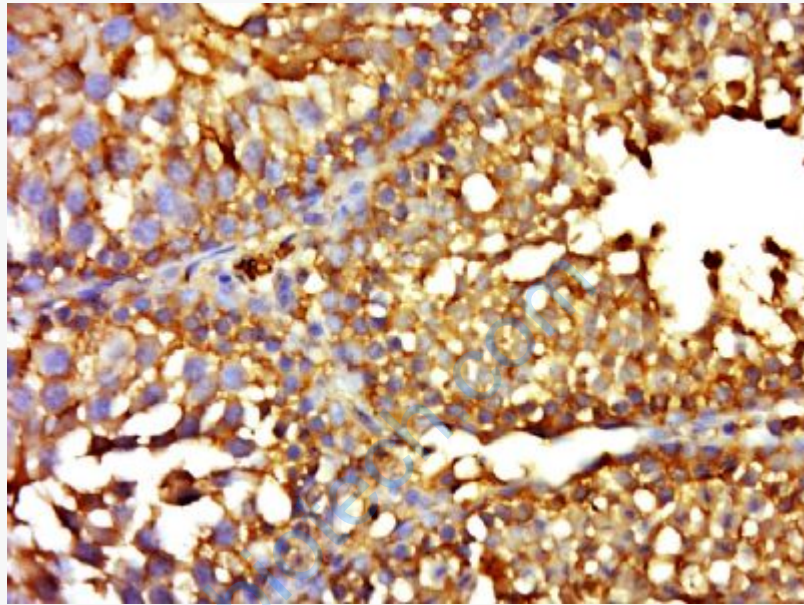
[SwissProt: E1BAB6](#) Cow

[SwissProt: E2RLM2](#) Dog

[SwissProt: Q9H1A4](#) Human

**Important Note:**

This product as supplied is intended for research use only, not for use in human, therapeutic or diagnostic applications.



**Picture:**

Paraformaldehyde-fixed, paraffin embedded (rat testis); Antigen retrieval by boiling in sodium citrate buffer (pH6.0) for 15min; Block endogenous peroxidase by 3% hydrogen peroxide for 20 minutes; Blocking buffer (normal goat serum) at 37°C for 30min; Antibody incubation with (ANAPC) Polyclonal Antibody, Unconjugated (SL12482R) at 1:500 overnight at 4°C, followed by a conjugated secondary (sp-0023) for 20 minutes and DAB staining.