



Rabbit Anti-APC10 antibody

SL12483R

Product Name:	APC10
Chinese Name:	细胞周期后期促进蛋白亚基10抗体
Alias:	ANAPC 10; anapc10; Anaphase promoting complex 10; Anaphase promoting complex subunit 10; Anaphase-promoting complex subunit 10; Apc 10; APC10; APC10_HUMAN; Cyclosome subunit 10; DKFZP564L0562; Doc 1; Doc1; OTTHUMP00000220297; OTTHUMP00000220298; OTTHUMP00000220299; OTTHUMP00000220300; OTTHUMP00000220303.
Organism Species:	Rabbit
Clonality:	Polyclonal
React Species:	Human,Mouse,Rat,Chicken,Pig,Cow,Rabbit,Sheep,
Applications:	WB=1:500-2000ELISA=1:500-1000IHC-P=1:400-800IHC-F=1:400-800ICC=1:100-500IF=1:100-500 (Paraffin sections need antigen repair) not yet tested in other applications. optimal dilutions/concentrations should be determined by the end user.
Molecular weight:	21kDa
Cellular localization:	The nucleuscytoplasmic
Form:	Lyophilized or Liquid
Concentration:	1mg/ml
immunogen:	KLH conjugated synthetic peptide derived from human APC10:31-130/185
Lsotype:	IgG
Purification:	affinity purified by Protein A
Storage Buffer:	0.01M TBS(pH7.4) with 1% BSA, 0.03% Proclin300 and 50% Glycerol.
Storage:	Store at -20 °C for one year. Avoid repeated freeze/thaw cycles. The lyophilized antibody is stable at room temperature for at least one month and for greater than a year when kept at -20°C. When reconstituted in sterile pH 7.4 0.01M PBS or diluent of antibody the antibody is stable for at least two weeks at 2-4 °C.
PubMed:	PubMed
Product Detail:	Composed of more than ten subunits, the anaphase-promoting complex (APC) acts in a cell-cycle dependent manner to promote the separation of sister chromatids during the transition between metaphase and anaphase in mitosis. APC, or cyclosome,

accomplishes this progression through the ubiquitination of mitotic cyclins and other regulatory proteins that are targeted for destruction during cell division. APC is phosphorylated, and thus activated, by protein kinases Cdk1/cyclin B and polo-like kinase (Plk). APC is under tight control by a number of regulatory factors, including CDC20, CDH1 and MAD2. Specifically, CDC20 and CDH1 directly bind to and activate the cyclin-ubiquitination activity of APCs. In contrast, MAD2 inhibits APC by forming a ternary complex with CDC20 and APC, thus preventing APC activation. APC10 contains a Doc1 homology domain, which is a beta-sandwich structure common to many other putative E3 ubiquitin ligases. APC10 binds to core APC subunits throughout the cell cycle. Specifically, APC10 binds to the C-terminus of CDC27/APC3. During mitosis, APC10 is localized in centrosomes and mitotic spindles. APC10 also localizes to kinetochores from prophase to anaphase, and to the midbody in telophase and cytokinesis.

Function:

Component of the anaphase promoting complex/cyclosome (APC/C), a cell cycle-regulated E3 ubiquitin ligase that controls progression through mitosis and the G1 phase of the cell cycle. The APC/C complex acts by mediating ubiquitination and subsequent degradation of target proteins: it mainly mediates the formation of 'Lys-11'-linked polyubiquitin chains and, to a lower extent, the formation of 'Lys-48'- and 'Lys-63'-linked polyubiquitin chains.

Subunit:

The APC/C is composed of at least 12 subunits. The C-terminus of APC10 binds to CDC27/APC3.

Similarity:

Belongs to the APC10 family.
Contains 1 DOC domain.

SWISS:

Q9UM13

Gene ID:

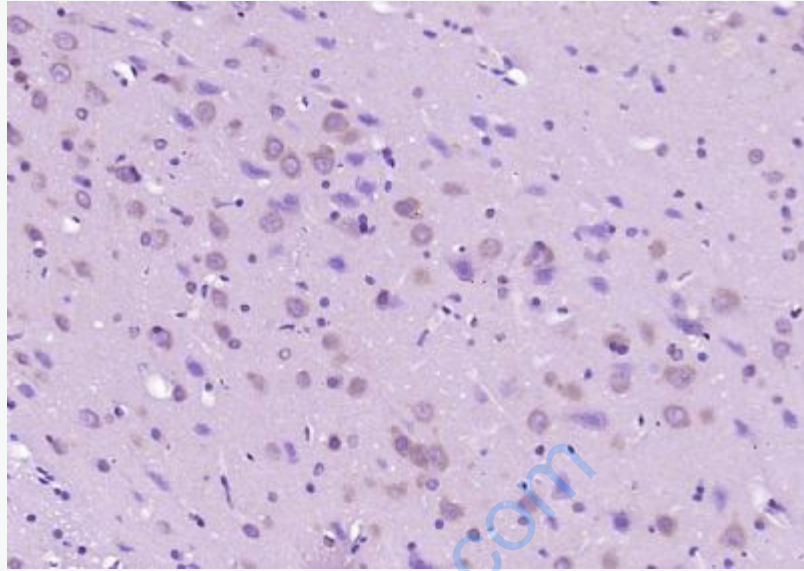
10393

Database links:

UniProtKB/Swiss-Prot: Q9UM13.1

Important Note:

This product as supplied is intended for research use only, not for use in human, therapeutic or diagnostic applications.



Picture:

Paraformaldehyde-fixed, paraffin embedded (rat brain); Antigen retrieval by boiling in sodium citrate buffer (pH6.0) for 15min; Block endogenous peroxidase by 3% hydrogen peroxide for 20 minutes; Blocking buffer (normal goat serum) at 37°C for 30min; Antibody incubation with (APC10) Polyclonal Antibody, Unconjugated (SL12483R) at 1:200 overnight at 4°C, followed by operating according to SP Kit(Rabbit) (sp-0023) instructions and DAB staining.