



Rabbit Anti-ARFRP1 antibody

SL12514R

Product Name:	ARFRP1
Chinese Name:	ADP核糖基化因子相关蛋白1
Alias:	ADP ribosylation factor related protein 1; ARF related protein 1; ARF related protein; ARL 18; ARL18; ARP 1; ARP; ARP1; Helicase like protein NHL; MGC6837; SCG10 like protein; ARFRP_HUMAN.
Organism Species:	Rabbit
Clonality:	Polyclonal
React Species:	Human,Mouse,Rat,Dog,Pig,Horse,Sheep,
Applications:	WB=1:500-2000ELISA=1:500-1000IHC-P=1:400-800IHC-F=1:400-800ICC=1:100-500IF=1:100-500 (Paraffin sections need antigen repair) not yet tested in other applications. optimal dilutions/concentrations should be determined by the end user.
Molecular weight:	23kDa
Cellular localization:	cytoplasmic
Form:	Lyophilized or Liquid
Concentration:	1mg/ml
immunogen:	KLH conjugated synthetic peptide derived from human ARFRP1:1-100/201
Isotype:	IgG
Purification:	affinity purified by Protein A
Storage Buffer:	0.01M TBS(pH7.4) with 1% BSA, 0.03% Proclin300 and 50% Glycerol.
Storage:	Store at -20 °C for one year. Avoid repeated freeze/thaw cycles. The lyophilized antibody is stable at room temperature for at least one month and for greater than a year when kept at -20°C. When reconstituted in sterile pH 7.4 0.01M PBS or diluent of antibody the antibody is stable for at least two weeks at 2-4 °C.
PubMed:	PubMed
Product Detail:	The ADP-ribosylation factor (ARF) protein family are structurally and functionally conserved members of the Ras superfamily of regulatory GTP-binding proteins. ARFs influence vesicle trafficking and signal transduction in eukaryotic cells and they play a central role in the maintenance of organelle integrity, assembly of coat proteins and activation of phospholipase D (PC-PLD). ARFRP1 (ADP-ribosylation factor related

protein 1), also known as ARP or ARL18, is a 201 amino acid membrane-associated GTPase that localizes to the plasma membrane and the Golgi apparatus and is related to the ARF family of regulatory proteins. Expressed in a variety of tissues, ARFRP1 interacts with SYS1 and is thought to be involved in plasma membrane-related signaling events. ARFRP1 exists as multiple alternatively spliced isoforms and is encoded by a gene which maps to a gene cluster on chromosome 20 that is commonly overexpressed in tumors, suggesting a role for ARFRP1 in carcinogenesis.

Function:

ARFRP1 (ARF related protein 1) is a membrane-associated GTP-ase and localizes to the plasma membrane. It is related to the ADP-ribosylation factor (ARF) and ARF-like (ARL) genes. ARFPR1 is possibly involved in plasma membrane related signaling events. ARFRP1 interacts with SYS1 and is located in Golgi and found in most tissues.

Subunit:

Interacts with SYS1.

Subcellular Location:

Golgi Apparatus

Tissue Specificity:

Found in most tissues.

Similarity:

Belongs to the small GTPase superfamily. Arf family.

SWISS:

Q13795

Gene ID:

10139

Database links:

[Entrez Gene: 10139](#)Human

[Entrez Gene: 76688](#)Mouse

[Entrez Gene: 117051](#)Rat

[Omim: 604699](#)Human

[SwissProt: Q13795](#)Human

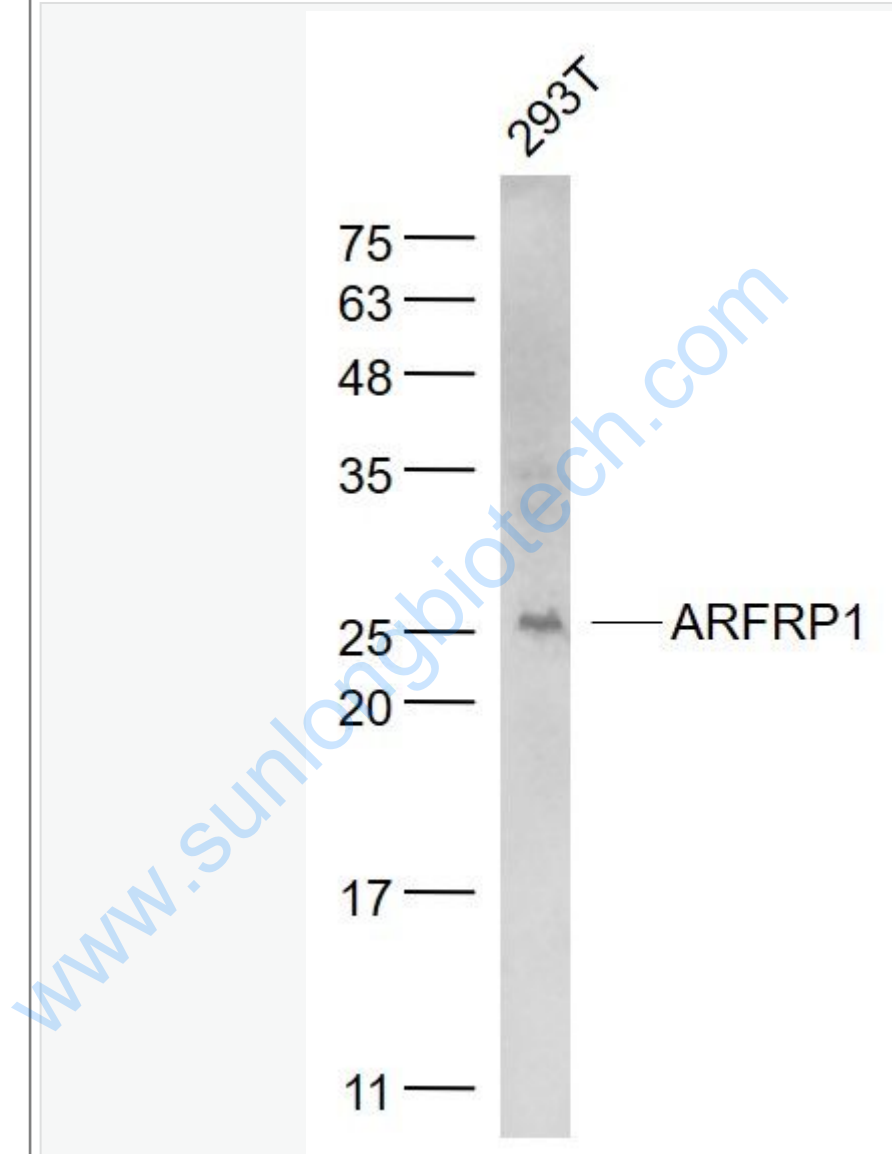
[SwissProt: Q8BXL7](#)Mouse

[SwissProt: Q63055](#)Rat

Important Note:

This product as supplied is intended for research use only, not for use in human, therapeutic or diagnostic applications.

Picture:



Sample:

293T(Human) Cell Lysate at 30 ug

Primary: Anti- ARFRP1 (SL12514R) at 1/1000 dilution

Secondary: IRDye800CW Goat Anti-Rabbit IgG at 1/20000 dilution

	<p>Predicted band size: 23 kD</p>
--	-----------------------------------

	<p>Observed band size: 25 kD</p>
--	----------------------------------

www.sunlongbiotech.com