



Rabbit Anti-CD166 antibody

SL1251R

Product Name:	CD166
Chinese Name:	活化白Cell adhesion molecule抗体
Alias:	activated leukocyte cell adhesion molecule; ALCAM protein; ALCAM; CD 166; CD166 antigen; FLJ38514; MEMD; MGC71733; FLJ3851; AI853494; BEN; DM-GRASP; MGC27910; MuSC; SC1; CD166 HUMAN.
文献引用 PubMed :	<p>Specific References(2) SL1251R has been referenced in 2 publications.</p> <p>[IF=3.53]Lee, Tao-Chen, et al. "Comparison of Surface Markers between Human and Rabbit Mesenchymal Stem Cells." PLOS ONE 9.11 (2014): e111390.Rabbit. PubMed:25380245</p> <p>[IF=1.99]Kovac, Michal, et al. "Different RNA and protein expression of surface markers in rabbit amniotic fluid-derived mesenchymal stem cells." Biotechnology Progress (2017).FCM;Rabbit. PubMed:28653478</p>
Organism Species:	Rabbit
Clonality:	Polyclonal
React Species:	Human,Mouse,Rat,Chicken,Dog,Pig,Cow,Horse,Rabbit,
Applications:	WB=1:500-2000ELISA=1:500-1000IHC-F=1:400-800Flow-Cyt=1μg/TestIF=1:100-500 (Paraffin sections need antigen repair) not yet tested in other applications. optimal dilutions/concentrations should be determined by the end user.
Molecular weight:	62kDa
Cellular localization:	The cell membrane
Form:	Lyophilized or Liquid
Concentration:	1mg/ml
immunogen:	KLH conjugated synthetic peptide derived from human CD166:451-583/583<Cytoplasmic>

Lsotype:	IgG
Purification:	affinity purified by Protein A
Storage Buffer:	0.01M TBS(pH7.4) with 1% BSA, 0.03% Proclin300 and 50% Glycerol.
Storage:	Store at -20 °C for one year. Avoid repeated freeze/thaw cycles. The lyophilized antibody is stable at room temperature for at least one month and for greater than a year when kept at -20°C. When reconstituted in sterile pH 7.4 0.01M PBS or diluent of antibody the antibody is stable for at least two weeks at 2-4 °C.
PubMed:	PubMed
Product Detail:	<p>CD166 is a member of the Ig superfamily and is expressed on activated T-cells, B cells and other cells including thymic epithelial cells, fibroblasts, keratinocytes and neurons. CD6 has been identified as a receptor for CD166. The expression of CD166 is up-regulated in low-grade prostate tumors and down-regulated in high-grade tumors; may play role in progression of prostate cancer.</p> <p>Function: Cell adhesion molecule that binds to CD6. Involved in neurite extension by neurons via heterophilic and hemophilic interactions. May play a role in the binding of T- and B-cells to activated leukocytes, as well as in interactions between cells of the nervous system.</p> <p>Subcellular Location: Membrane; Single-pass type I membrane protein.</p> <p>Tissue Specificity: Spleen, placenta, liver, and weakly in liver. Expressed by activated T-cells, B-cells, monocytes and thymic epithelial cells. Expressed by neurons in the brain. Restricted expression in tumor cell lines. Preferentially expressed in highly metastasizing melanoma cell lines.</p> <p>Similarity: Contains 3 Ig-like C2-type (immunoglobulin-like) domains. Contains 2 Ig-like V-type (immunoglobulin-like) domains.</p> <p>SWISS: Q13740</p> <p>Gene ID: 214</p> <p>Database links: Entrez Gene: 214Human Entrez Gene: 11658Mouse Entrez Gene: 79559Rat</p>

[Omid: 601662](#)Human

[SwissProt: Q13740](#)Human

[SwissProt: Q61490](#)Mouse

[SwissProt: O35112](#)Rat

[Unigene: 591293](#)Human

[Unigene: 288282](#)Mouse

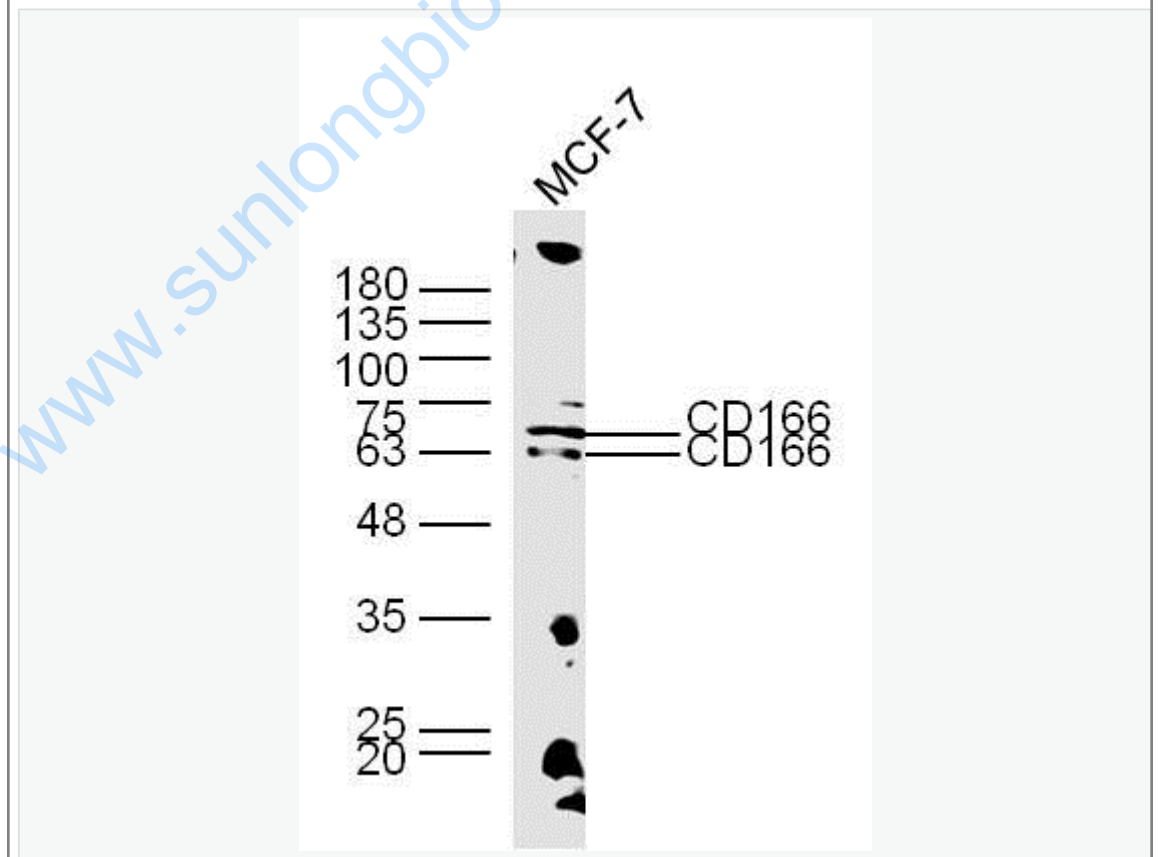
[Unigene: 5789](#)Rat

Important Note:

This product as supplied is intended for research use only, not for use in human, therapeutic or diagnostic applications.

ALCAM/CD166是免疫球蛋白超家族的成员,对多种Tumour生长和转移相关的Tumour细胞特性具有调节作用,ALCAM/CD166在乳腺癌、前列腺癌、食道癌、结肠癌及恶性黑色素瘤等Tumour都有一定的表达,尤以结肠、直肠癌表达显著。

Picture:



Sample:

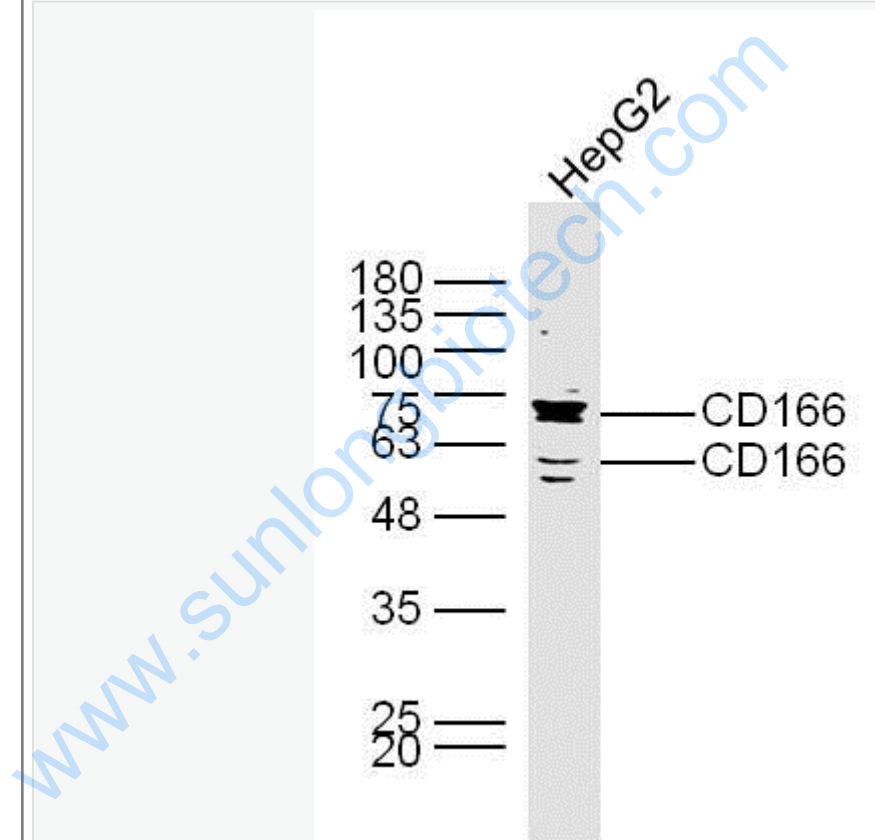
MCF-7 Cell (Human) Lysate at 30 ug

Primary: Anti-CD166 (SL1251R) at 1/300 dilution

Secondary: IRDye800CW Goat Anti-Rabbit IgG at 1/20000 dilution

Predicted band size: 62 kD

Observed band size: 62/70 kD



Sample:

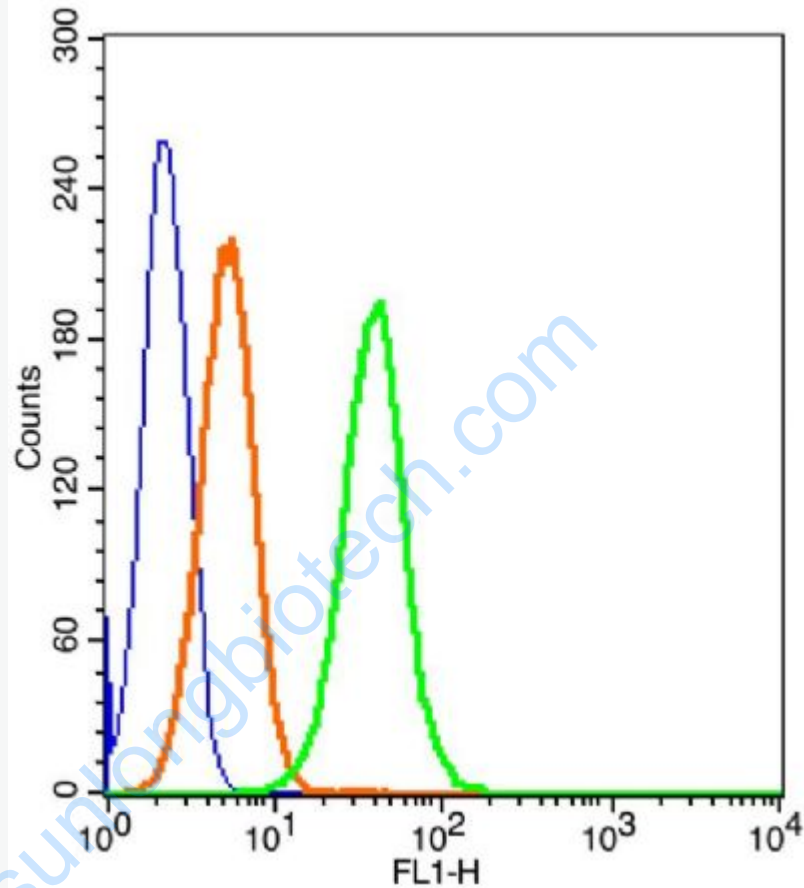
HepG2 Cell (Human) Lysate at 30 ug

Primary: Anti-CD166 (SL1251R) at 1/300 dilution

Secondary: IRDye800CW Goat Anti-Rabbit IgG at 1/20000 dilution

Predicted band size: 62 kD

Observed band size: 62/70 kD



Blank control: Molt-4 Cells(blue).

Primary Antibody: Rabbit Anti-CD166/FITC Conjugated antibody (SL1251R),

Dilution: 1 μ g in 100 μ L 1X PBS containing 0.5% BSA;

Isotype Control Antibody: Rabbit IgG/AF488(orange) ,used under the same conditions.

Protocol

The cells were fixed with 2% paraformaldehyde (10 min) . The cells were washed twice with 1 X PBS. The cells were incubated in 1 X PBS containing 0.5% BSA + 1

0% goat serum (15 min) to block non-specific protein-protein interactions followed by the incubated with antibody (SL1251R) for 30 min on ice. Acquisition of 20,000 events was performed.