



## Rabbit Anti-ATF5 antibody

SL12542R

<b>Product Name:</b>	ATF5
<b>Chinese Name:</b>	活化转录因子5抗体
<b>Alias:</b>	Activating transcription factor 5 alpha/beta; Activating transcription factor 5; Activating transcription factor X; AFTA; ATF 5; ATF 7; ATF7; ATFX; BZIP protein ATF7; cAMP dependent transcription factor ATF 5; cAMP dependent transcription factor ATF5; Cyclic AMP dependent transcription factor ATF 5; Cyclic AMP dependent transcription factor ATF5; FLJ34666; HMFN0395; MGC102397; NAP1; NRIF3 associated protein; ODA 10; Transcription factor ATFX; Transcription factor like protein ODA 10; Transcription factor like protein ODA10; ATF5_HUMAN.
<b>Organism Species:</b>	Rabbit
<b>Clonality:</b>	Polyclonal
<b>React Species:</b>	Human,Mouse,Rat,Dog,Pig,Cow,Horse,
<b>Applications:</b>	WB=1:500-2000ELISA=1:500-1000 not yet tested in other applications. optimal dilutions/concentrations should be determined by the end user.
<b>Molecular weight:</b>	31kDa
<b>Cellular localization:</b>	The nucleocytoplasmic
<b>Form:</b>	Lyophilized or Liquid
<b>Concentration:</b>	1mg/ml
<b>immunogen:</b>	KLH conjugated synthetic peptide derived from human ATF5:201-282/282
<b>Lsotype:</b>	IgG
<b>Purification:</b>	affinity purified by Protein A
<b>Storage Buffer:</b>	0.01M TBS(pH7.4) with 1% BSA, 0.03% Proclin300 and 50% Glycerol.
<b>Storage:</b>	Store at -20 °C for one year. Avoid repeated freeze/thaw cycles. The lyophilized antibody is stable at room temperature for at least one month and for greater than a year when kept at -20°C. When reconstituted in sterile pH 7.4 0.01M PBS or diluent of antibody the antibody is stable for at least two weeks at 2-4 °C.
<b>PubMed:</b>	<a href="#">PubMed</a>
<b>Product Detail:</b>	Eukaryotic gene transcription is regulated by sequence-specific transcription factors that bind modular cis acting promoter and enhancer elements. The ATF/CREB

transcription factor family binds the palindromic cAMP response element (CRE) octanucleotide TGACGTCA. The best characterized members of this gene family include CREB-1, CREB-2 (also designated ATF-4), CRE-BPa, LZIP (also designated CREB3 and Luman), CREM-1, CREM-2, ATF-1, ATF-2, ATF-3, ATF-5, ATF-6 and ATF-7. This family of proteins contain highly divergent N-terminal domains, but share a C-terminal leucine zipper for dimerization and DNA binding. ATF-5 (ATFx), which can localize to the cytoplasm or the nucleus, binds DNA as a dimer. It interacts with CCND3 and PTP4A1.

**Function:**

ATF5 or Activating transcription factor 5, binds to cAMP inducible promoters and is involved in gene transcription. This protein binds the cAMP response element (CRE) (consensus: 5'-GTGACGT[AC][AG]-3'), a sequence present in many viral and cellular promoters. ATF5 plays a role in inhibition of nerve growth factor induced neuronal outgrowth and regulation of neurogenesis.

**Subunit:**

Binds DNA as a dimer. Interacts with PTP4A1/PRL-1 (By similarity). Interacts with CCND3, but not with CCND1 or CCND2. Interacts with CDC34.

**Subcellular Location:**

Cytoplasmic and Nuclear

**Post-translational modifications:**

Ubiquitinated by CDC34 and UBE2B in order to be degraded by the proteasome.

**Similarity:**

Belongs to the bZIP family.

Contains 1 bZIP (basic-leucine zipper) domain.

**SWISS:**

Q9Y2D1

**Gene ID:**

22809

**Database links:**

[Entrez Gene: 22809](#)Human

[Entrez Gene: 107503](#)Mouse

[Entrez Gene: 282840](#)Rat

[Omim: 606398](#)Human

[SwissProt: Q9Y2D1](#)Human

[SwissProt: O70191](#) Mouse

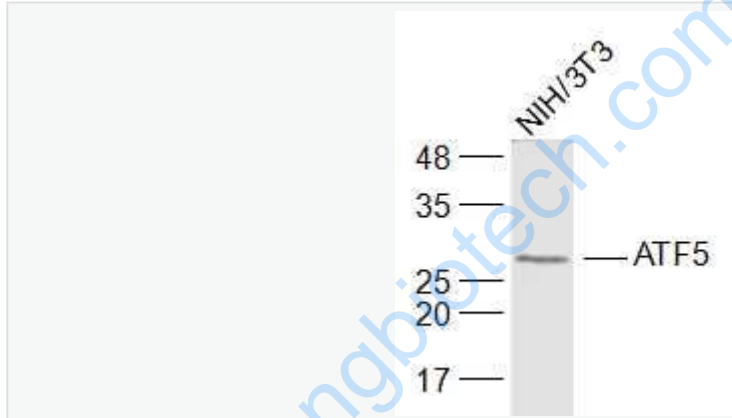
[SwissProt: Q6P788](#) Rat

[Unigene: 9754](#) Human

[Unigene: 389890](#) Mouse

**Important Note:**

This product as supplied is intended for research use only, not for use in human, therapeutic or diagnostic applications.



**Picture:**

Sample:

NIH/3T3(Mouse) Cell Lysate at 30 ug

Primary: Anti-ATF5 (SL12542R) at 1/1000 dilution

Secondary: IRDye800CW Goat Anti-Rabbit IgG at 1/20000 dilution

Predicted band size: 31 kD

Observed band size: 31 kD