



Rabbit Anti-ATF6 beta antibody

SL12543R

Product Name:	ATF6 beta
Chinese Name:	活化转录因子6 β 抗体
Alias:	Activating transcription factor 6 beta; Activating transcription factor 6 beta; ATF 6 beta; ATF6-beta; ATF6B; ATF6B_HUMAN; ATF6beta; cAMP response element binding protein related protein; cAMP response element-binding protein-related protein; cAMP responsive element binding protein like 1; cAMP-dependent transcription factor ATF-6 beta; cAMP-responsive element-binding protein-like 1; CREB L1; Creb related protein; CREB RP; Creb-rp; CREBL 1; CREBL1; Crebrp; Cyclic AMP dependent transcription factor ATF 6 beta; Cyclic AMP dependent transcription factor ATF6 beta; FLJ10066; G13; G13 protein; G13 protein; OTTHUMP00000029432; OTTHUMP00000029433; Processed cyclic AMP-dependent transcription factor ATF-6 beta; Protein G13.
Organism Species:	Rabbit
Clonality:	Polyclonal
React Species:	Human,Mouse,Rat,Dog,Pig,Cow,Horse,Rabbit,
Applications:	WB=1:500-2000ELISA=1:500-1000IHC-P=1:400-800IHC-F=1:400-800ICC=1:100-500IF=1:100-500 (Paraffin sections need antigen repair) not yet tested in other applications. optimal dilutions/concentrations should be determined by the end user.
Molecular weight:	77kDa
Cellular localization:	The nucleuscytoplasmicThe cell membrane
Form:	Lyophilized or Liquid
Concentration:	1mg/ml
immunogen:	KLH conjugated synthetic peptide derived from human ATF6 beta:301-400/703
Lsotype:	IgG
Purification:	affinity purified by Protein A
Storage Buffer:	0.01M TBS(pH7.4) with 1% BSA, 0.03% Proclin300 and 50% Glycerol.
Storage:	Store at -20 °C for one year. Avoid repeated freeze/thaw cycles. The lyophilized antibody is stable at room temperature for at least one month and for greater than a year when kept at -20°C. When reconstituted in sterile pH 7.4 0.01M PBS or diluent of antibody the antibody is stable for at least two weeks at 2-4 °C.

PubMed:[PubMed](#)

ATF-6 is a member of the basic-leucine zipper family of transcription factors. Endoplasmic reticulum stress causes cleavage of transmembrane ATF-6 and translocation of active ATF-6 to the nucleus. Soluble ATF-6 can exist as either an ATF-6beta homodimer or an ATF-6Alpha/beta heterodimer. Binding of the ATF-6beta homodimer or ATF-6Alpha/beta heterodimer to the nuclear transcription factor Y C (NF-YC) induces ER chaperone transcription.

Function:

Transcriptional factor that acts in the unfolded protein response (UPR) pathway by activating UPR target genes induced during ER stress. Binds DNA on the 5'-CCAC[GA]-3' half of the ER stress response element (ERSE) (5'-CCAATN(9)CCAC[GA]-3') when NF-Y is bound to ERSE.

Subunit:

Homodimer and heterodimer with ATF6-alpha. The dimer interacts with the nuclear transcription factor Y (NF-Y) trimer through direct binding to NF-Y subunit C (NF-YC).

Subcellular Location:

Endoplasmic reticulum membrane and Nucleus. Under ER stress the cleaved N-terminal cytoplasmic domain translocates into the nucleus.

Tissue Specificity:

Ubiquitous.

Post-translational modifications:

N-glycosylated.

During unfolded protein response an approximative 60 kDa fragment containing the cytoplasmic transcription factor domain is released by proteolysis. The cleavage is probably performed sequentially by site-1 and site-2 proteases.

Similarity:

Belongs to the bZIP family. ATF subfamily.
Contains 1 bZIP domain.

SWISS:

Q99941

Gene ID:

1388

Database links:

[Entrez Gene: 1388](#)Human

[Entrez Gene: 12915](#)Mouse

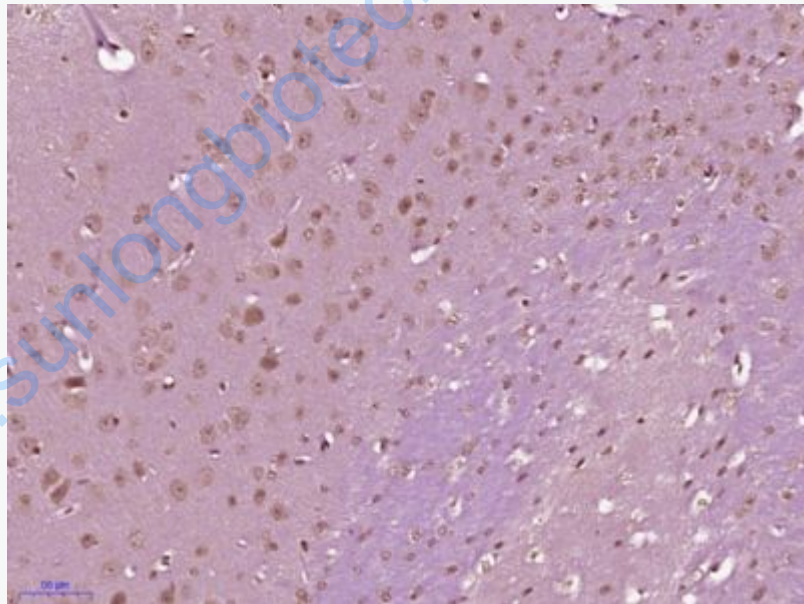
Product Detail:

[Entrez Gene: 406169](#)Rat
[Omin: 600984](#)Human
[SwissProt: Q5SSW7](#)Human
[SwissProt: Q99941](#)Human
[SwissProt: O35451](#)Mouse
[SwissProt: Q4G097](#)Rat
[SwissProt: Q6MG80](#)Rat

Important Note:

This product as supplied is intended for research use only, not for use in human, therapeutic or diagnostic applications.

Picture:



Paraformaldehyde-fixed, paraffin embedded (Mouse brain); Antigen retrieval by boiling in sodium citrate buffer (pH6.0) for 15min; Block endogenous peroxidase by 3% hydrogen peroxide for 20 minutes; Blocking buffer (normal goat serum) at 37°C for 30min; Antibody incubation with (ATF6 beta) Polyclonal Antibody, Unconjugated (SL12543R) at 1:400 overnight at 4°C, followed by operating

	according to SP Kit(Rabbit) (sp-0023) instructions and DAB staining.
--	--

www.sunlongbiotech.com