



Rabbit Anti-B7-H6 antibody

SL12559R

| | |
|-------------------------------|---|
| Product Name: | B7-H6 |
| Chinese Name: | B7H6蛋白抗体 |
| Alias: | B7 homolog 6; B7-H6; B7H6; B7H6_HUMAN; DKFZp686O24166; Natural cytotoxicity triggering receptor 3 ligand 1; NCR3LG1; Putative Ig like domain containing protein DKFZp686O24166/DKFZp686I21167. |
| Organism Species: | Rabbit |
| Clonality: | Polyclonal |
| React Species: | Human,Mouse, |
| Applications: | WB=1:500-2000ELISA=1:500-1000IHC-P=1:400-800IHC-F=1:400-800ICC=1:100-500IF=1:100-500 (Paraffin sections need antigen repair) not yet tested in other applications. optimal dilutions/concentrations should be determined by the end user. |
| Molecular weight: | 48kDa |
| Cellular localization: | The cell membrane |
| Form: | Lyophilized or Liquid |
| Concentration: | 1mg/ml |
| immunogen: | KLH conjugated synthetic peptide derived from human B7-H6:51-150/454<Extracellular> |
| Lsotype: | IgG |
| Purification: | affinity purified by Protein A |
| Storage Buffer: | 0.01M TBS(pH7.4) with 1% BSA, 0.03% Proclin300 and 50% Glycerol. |
| Storage: | Store at -20 °C for one year. Avoid repeated freeze/thaw cycles. The lyophilized antibody is stable at room temperature for at least one month and for greater than a year when kept at -20°C. When reconstituted in sterile pH 7.4 0.01M PBS or diluent of antibody the antibody is stable for at least two weeks at 2-4 °C. |
| PubMed: | PubMed |
| Product Detail: | B7H6 belongs to the B7 family (see MIM 605402) and is selectively expressed on tumor cells. Interaction of B7H6 with NKp30 (NCR3; MIM 611550) results in natural killer (NK) cell activation and cytotoxicity (Brandt et al., 2009 [PubMed 19528259]).[supplied by OMIM, Jan 2011]. |

Function:

Triggers NCR3-dependent natural killer cell activation.

Subunit:

Monomer. Interacts specifically with NCR3, but not with other natural killer cell-activating receptors, including NCR1, NCR2 and KLRK1.

Subcellular Location:

Cell membrane; Single-pass type I membrane protein.

Tissue Specificity:

Not detected in any normal tissue tested. Expressed at the surface of several tumor cell lines including T and B lymphomas, myeloid leukemias, melanomas, carcinomas and large T SV40 antigen-transformed cells (at protein level).

Similarity:

Contains 1 Ig-like C1-type (immunoglobulin-like) domain.

Contains 1 Ig-like V-type (immunoglobulin-like) domain.

SWISS:

Q68D85

Gene ID:

374383

Database links:

[Entrez Gene: 374383](#)Human

[Omim: 613714](#)Human

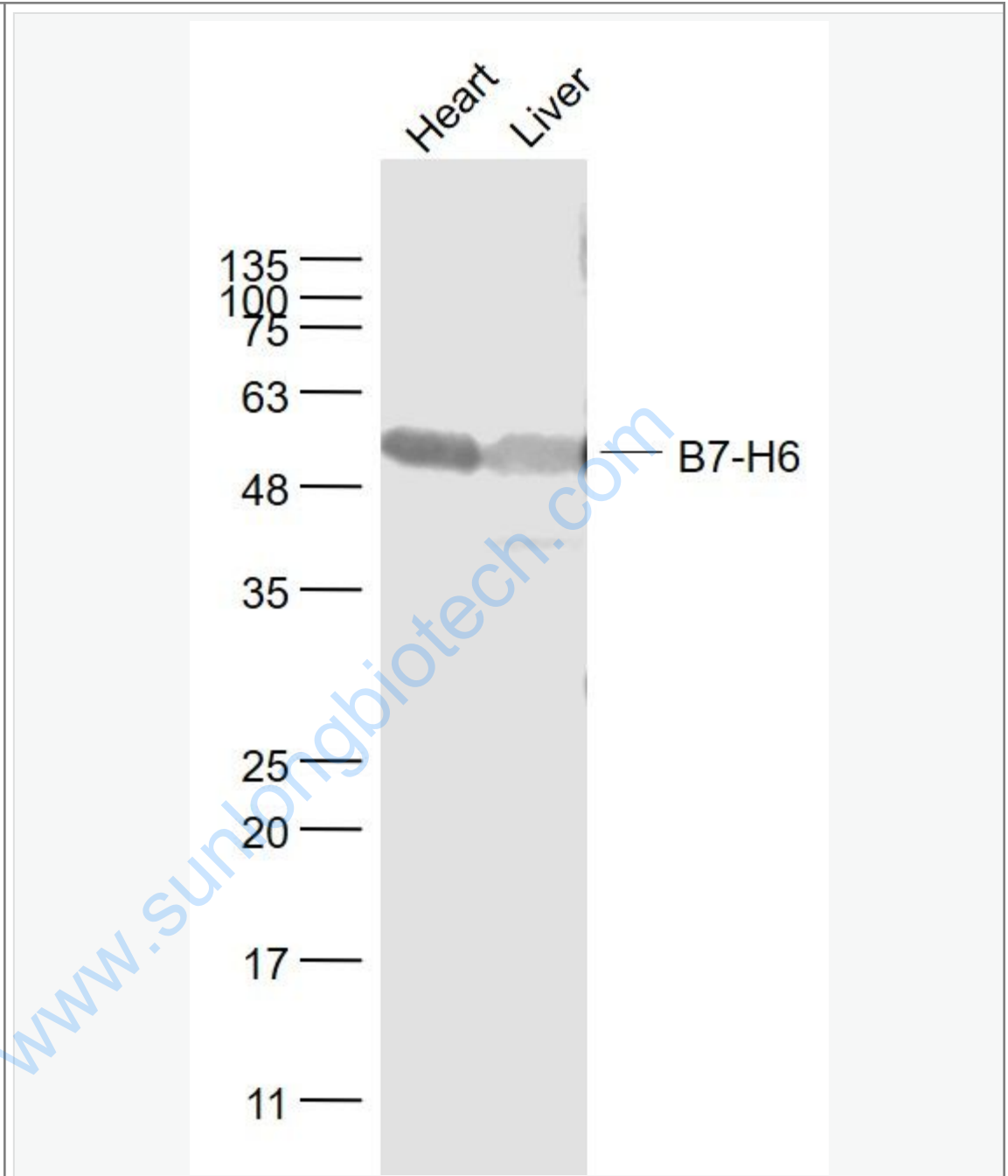
[SwissProt: Q68D85](#)Human

[Unigene: 146274](#)Human

Important Note:

This product as supplied is intended for research use only, not for use in human, therapeutic or diagnostic applications.

Picture:



Sample:

Heart (Mouse) Lysate at 40 ug

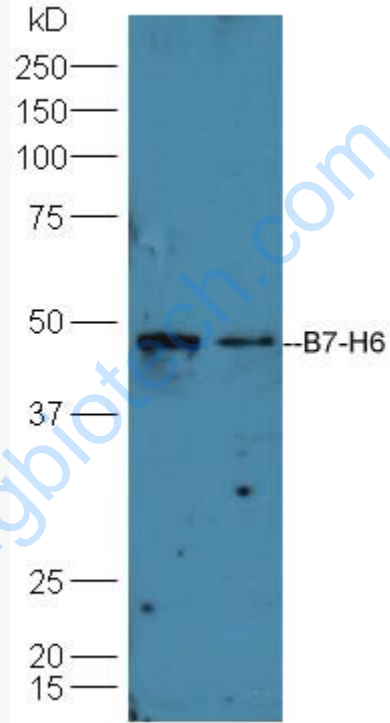
Liver (Mouse) Lysate at 40 ug

Primary: Anti- B7-H6 (SL12559R) at 1/1000 dilution

Secondary: IRDye800CW Goat Anti-Rabbit IgG at 1/20000 dilution

Predicted band size: 48 kD

Observed band size: 50 kD



Sample:

Huh7 Cell (Human) Lysate at 40 ug

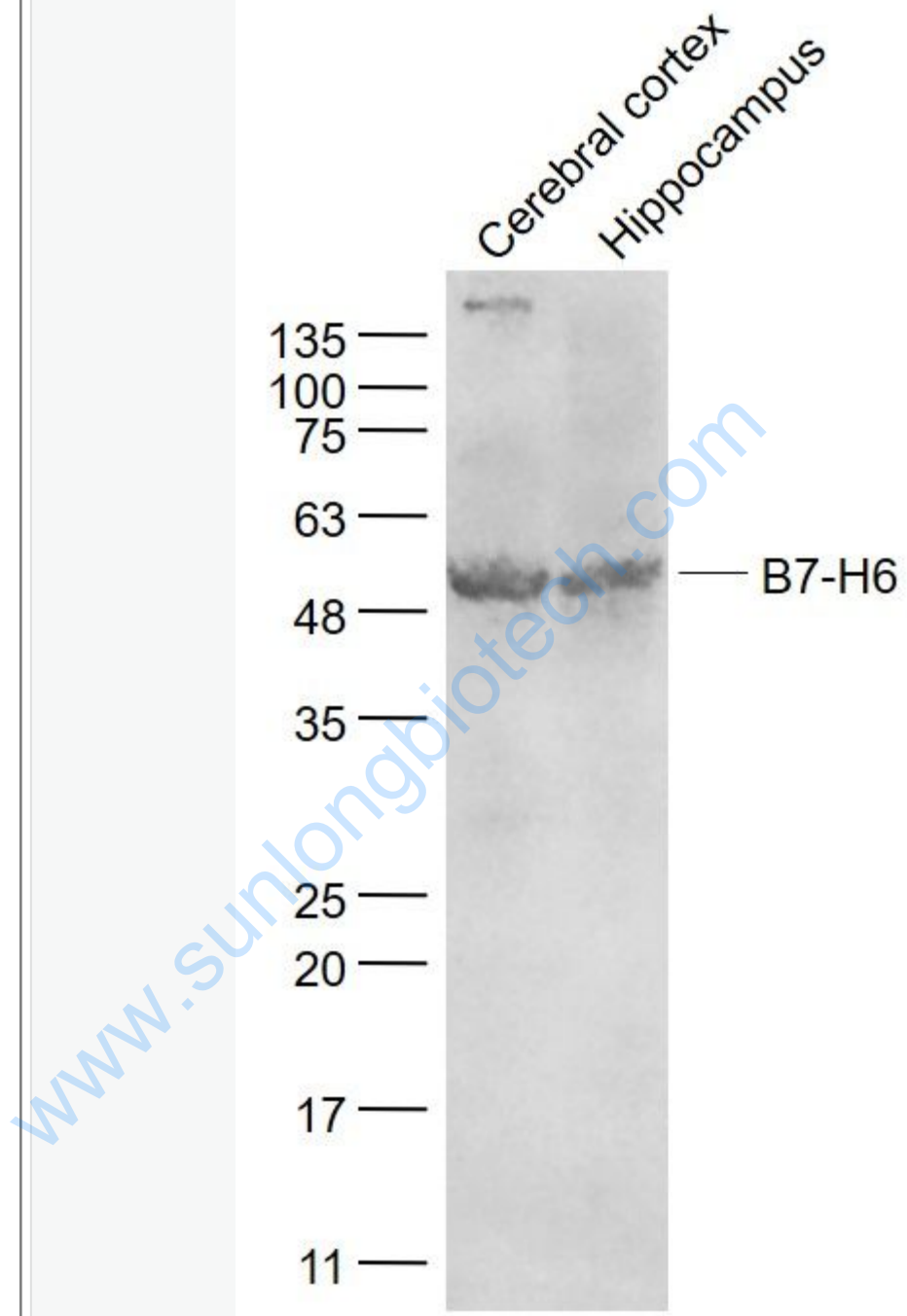
A549 Cell (Human) Lysate at 40 ug

Primary: Anti-B7-H6 (SL12559R) at 1/300 dilution

Secondary: HRP conjugated Goat-Anti-rabbit IgG (SL12559R) at 1/5000 dilution

Predicted band size: 48 kD

Observed band size: 48 kD



Sample:

Cerebral cortex (Mouse) Lysate at 40 ug

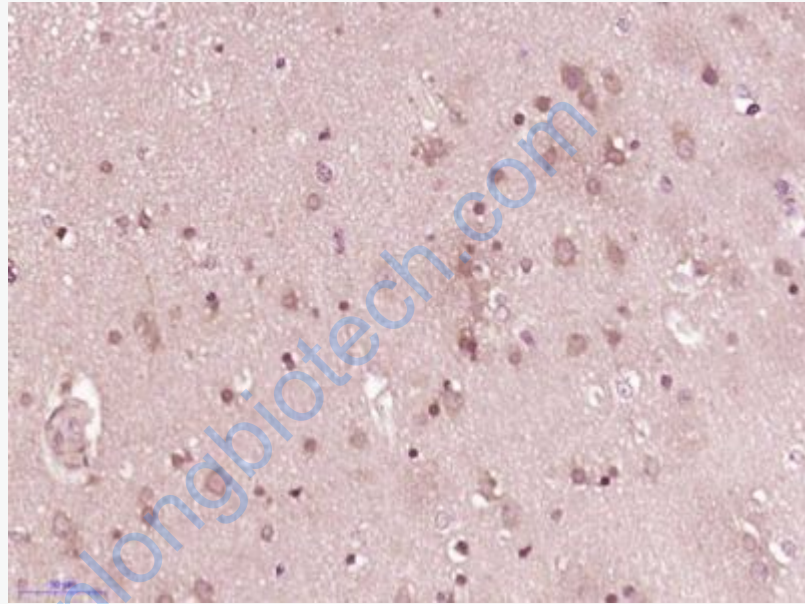
Hippocampus (Mouse) Lysate at 40 ug

Primary: Anti- B7-H6 (SL12559R) at 1/1000 dilution

Secondary: IRDye800CW Goat Anti-Rabbit IgG at 1/20000 dilution

Predicted band size: 48 kD

Observed band size: 50 kD



Paraformaldehyde-fixed, paraffin embedded (Human brain glioma); Antigen retrieval by boiling in sodium citrate buffer (pH6.0) for 15min; Block endogenous peroxidase by 3% hydrogen peroxide for 20 minutes; Blocking buffer (normal goat serum) at 37°C for 30min; Antibody incubation with (B7-H6) Polyclonal Antibody, Unconjugated (SL12559R) at 1:400 overnight at 4°C, followed by operating according to SP Kit(Rabbit) (sp-0023) instructions and DAB staining.