



Rabbit Anti-PDE9A antibody

SL12589R

Product Name:	PDE9A
Chinese Name:	磷酸二酯酶9A抗体
Alias:	5"-cyclic phosphodiesterase 9A; cGMP specific 3' 5' cyclic phosphodiesterase type 9; CGMP-specific 3'5'-cyclic phosphodiesterase type 9; FLJ90181; High affinity cGMP-specific 3"; High-affinity cGMP-specific 3'5'-cyclic phosphodiesterase 9A; HSPDE9A2; OTTHUMP00000109399; PDE 9A; Pde9a; PDE9A_HUMAN; Phosphodiesterase 9A; phosphodiesterase PDE9A21.
Organism Species:	Rabbit
Clonality:	Polyclonal
React Species:	Human,Mouse,Rat,Pig,Cow,Sheep,
Applications:	ELISA=1:500-1000IHC-P=1:400-800IHC-F=1:400-800ICC=1:100-500IF=1:100-500 (Paraffin sections need antigen repair) not yet tested in other applications. optimal dilutions/concentrations should be determined by the end user.
Molecular weight:	70-73kDa
Cellular localization:	cytoplasmic
Form:	Lyophilized or Liquid
Concentration:	1mg/ml
immunogen:	KLH conjugated synthetic peptide derived from human PDE9A:21-120/593
Lsotype:	IgG
Purification:	affinity purified by Protein A
Storage Buffer:	0.01M TBS(pH7.4) with 1% BSA, 0.03% Proclin300 and 50% Glycerol.
Storage:	Store at -20 °C for one year. Avoid repeated freeze/thaw cycles. The lyophilized antibody is stable at room temperature for at least one month and for greater than a year when kept at -20°C. When reconstituted in sterile pH 7.4 0.01M PBS or diluent of antibody the antibody is stable for at least two weeks at 2-4 °C.
PubMed:	PubMed
Product Detail:	The protein encoded by this gene catalyzes the hydrolysis of cAMP and cGMP to their corresponding monophosphates. The encoded protein plays a role in signal transduction by regulating the intracellular concentration of these cyclic nucleotides. Multiple

transcript variants encoding several different isoforms have been found for this gene. [provided by RefSeq, Jul 2008]

Function:

Hydrolyzes the second messenger cGMP, which is a key regulator of many important physiological processes.

Subcellular Location:

Cytoplasm. Endoplasmic reticulum; Cell projection > ruffle membrane. Cytoplasm > perinuclear region and Cell projection > ruffle membrane. Cytoplasm > perinuclear region. Golgi apparatus. Endoplasmic reticulum.

Tissue Specificity:

Expressed in all tissues examined (testis, brain, small intestine, skeletal muscle, heart, lung, thymus, spleen, placenta, kidney, liver, pancreas, ovary and prostate) except blood. Highest levels in brain, heart, kidney, spleen, prostate and colon. Isoform PDE9A12 is found in prostate.

Similarity:

Belongs to the cyclic nucleotide phosphodiesterase family. PDE9 subfamily.

SWISS:

O76083

Gene ID:

5152

Database links:

[Entrez Gene: 5152](#) Human

[Entrez Gene: 18585](#) Mouse

[Entrez Gene: 191569](#) Rat

[GenBank: NP_001001567.1](#) Human

[Omim: 602973](#) Human

[SwissProt: O76083](#) Human

[SwissProt: O76083-2](#) Human

[SwissProt: O70628](#) Mouse

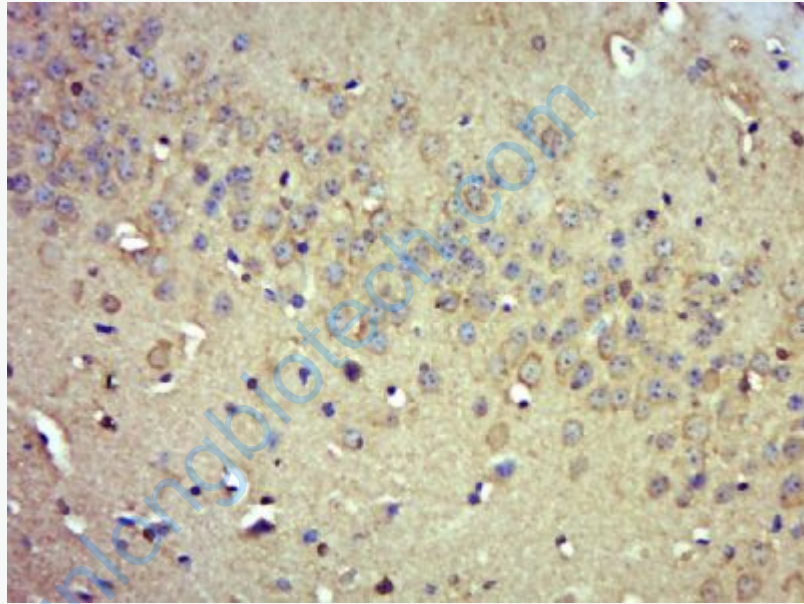
[Unigene: 473927](#) Human

[Unigene: 10812](#) Mouse

[Unigene: 20981](#) Rat

Important Note:

This product as supplied is intended for research use only, not for use in human, therapeutic or diagnostic applications.



Picture:

Paraformaldehyde-fixed, paraffin embedded (Mouse brain); Antigen retrieval by boiling in sodium citrate buffer (pH6.0) for 15min; Block endogenous peroxidase by 3% hydrogen peroxide for 20 minutes; Blocking buffer (normal goat serum) at 37°C for 30min; Antibody incubation with (PDE9A) Polyclonal Antibody, Unconjugated (SL12589R) at 1:500 overnight at 4°C, followed by a conjugated secondary (sp-0023) for 20 minutes and DAB staining.