



Rabbit Anti-ICAM-2/CD102 antibody

SL1258R

Product Name:	ICAM-2/CD102
Chinese Name:	细胞间粘附分子-2抗体
Alias:	CD102; Intercellular adhesion molecule 2; CD102 antigen; ICAM 2; ICAM-2; ICAM2; Intercellular adhesion molecule 2 precursor; Ly60.
Organism Species:	Rabbit
Clonality:	Polyclonal
React Species:	Human,Mouse,Rat,
Applications:	WB=1:500-2000ELISA=1:500-1000IHC-P=1:400-800IHC-F=1:400-800Flow-Cyt=1µg/TestIF=1:100-500 (Paraffin sections need antigen repair) not yet tested in other applications. optimal dilutions/concentrations should be determined by the end user.
Molecular weight:	28kDa
Cellular localization:	The cell membrane
Form:	Lyophilized or Liquid
Concentration:	1mg/ml
immunogen:	KLH conjugated synthetic peptide derived from human ICAM-2:175-277/277
Lsotype:	IgG
Purification:	affinity purified by Protein A
Storage Buffer:	0.01M TBS(pH7.4) with 1% BSA, 0.03% Proclin300 and 50% Glycerol.
Storage:	Store at -20 °C for one year. Avoid repeated freeze/thaw cycles. The lyophilized antibody is stable at room temperature for at least one month and for greater than a year when kept at -20°C. When reconstituted in sterile pH 7.4 0.01M PBS or diluent of antibody the antibody is stable for at least two weeks at 2-4 °C.
PubMed:	PubMed
Product Detail:	The protein encoded by this gene is a member of the intercellular adhesion molecule (ICAM) family. All ICAM proteins are type I transmembrane glycoproteins, contain 2-9 immunoglobulin-like C2-type domains, and bind to the leukocyte adhesion LFA-1 protein. This protein may play a role in lymphocyte recirculation by blocking LFA-1-dependent cell adhesion. It mediates adhesive interactions important for antigen-specific immune response, NK-cell mediated clearance, lymphocyte recirculation, and other

cellular interactions important for immune response and surveillance. Several transcript variants encoding the same protein have been found for this gene. [provided by RefSeq, Jul 2008]

Function:

ICAM proteins are ligands for the leukocyte adhesion protein LFA-1 (integrin alpha-L/beta-2). ICAM2 may play a role in lymphocyte recirculation by blocking LFA-1-dependent cell adhesion. It mediates adhesive interactions important for antigen-specific immune response, NK-cell mediated clearance, lymphocyte recirculation, and other cellular interactions important for immune response and surveillance.

Subcellular Location:

Membrane; Single-pass type I membrane protein.

Tissue Specificity:

Expressed in endothelial cells and leukocytes. High levels found in lung.

Similarity:

Belongs to the immunoglobulin superfamily. ICAM family. Contains 2 Ig-like C2-type (immunoglobulin-like) domains.

SWISS:

P35330

Gene ID:

3384

Database links:

[Entrez Gene: 3384](#)Human

[Entrez Gene: 15896](#)Mouse

[Oimim: 146630](#)Human

[SwissProt: P13598](#)Human

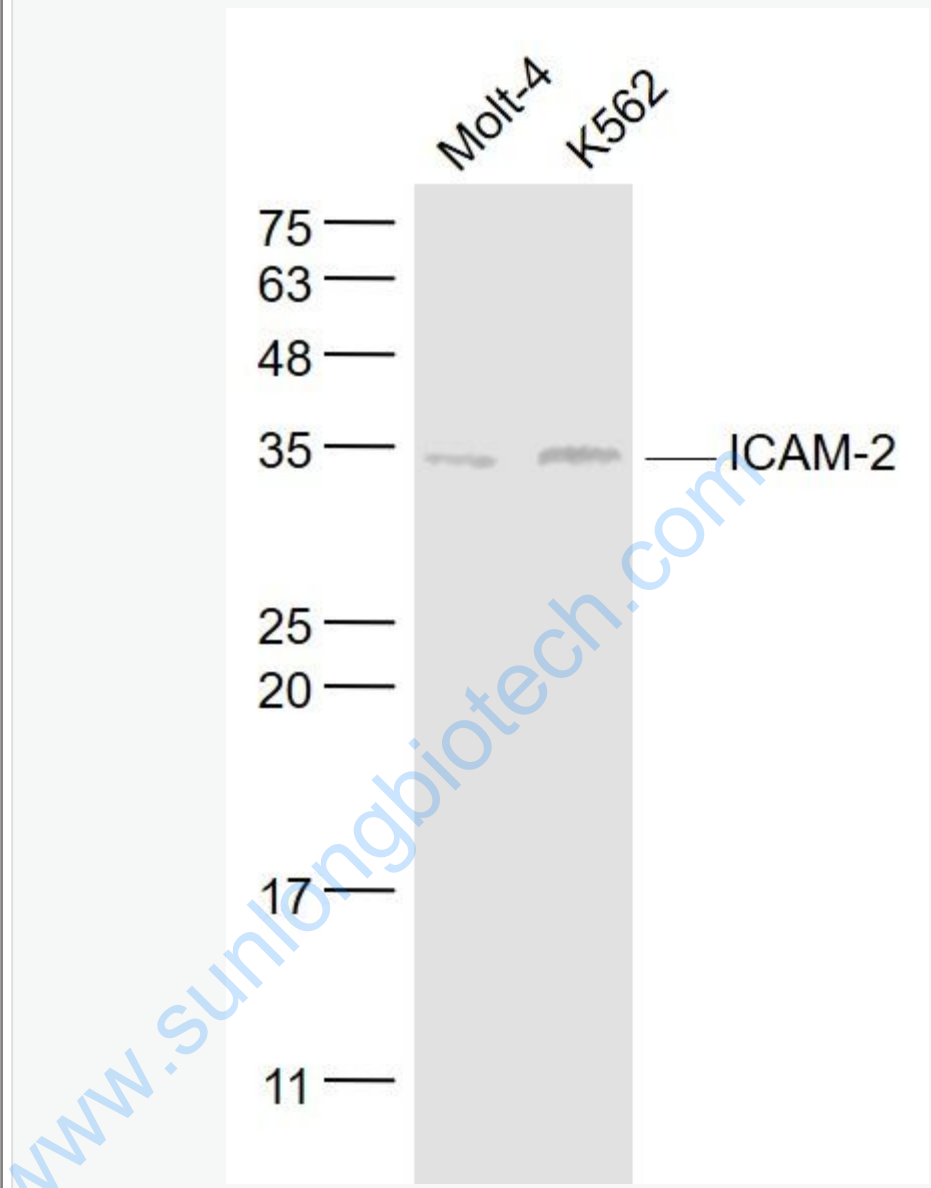
[SwissProt: P35330](#)Mouse

Important Note:

This product as supplied is intended for research use only, not for use in human, therapeutic or diagnostic applications.

ICAM-2也是免疫蛋白超家族粘附分子之一。

Picture:



Sample:

Molt-4(Human) Cell Lysate at 30 ug

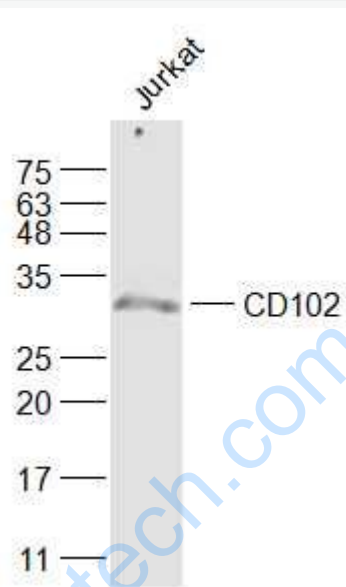
K562(Human) Cell Lysate at 30 ug

Primary: Anti- ICAM-2/CD102 (SL1258R) at 1/1000 dilution

Secondary: IRDye800CW Goat Anti-Rabbit IgG at 1/20000 dilution

Predicted band size: 28 kD

Observed band size: 31 kD



Sample:

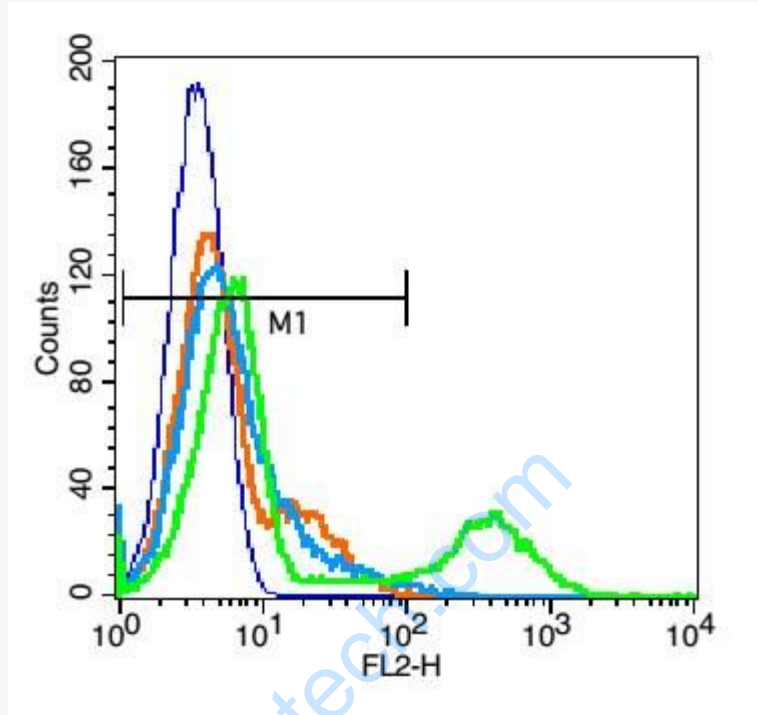
Jurkat(Human) Cell Lysate at 30 ug

Primary: Anti-CD102 (SL1258R) at 1/1000 dilution

Secondary: IRDye800CW Goat Anti-Rabbit IgG at 1/20000 dilution

Predicted band size: 28 kD

Observed band size: 28 kD



Blank control: Jurkat cells(blue).

Primary Antibody:Rabbit Anti-CD102 antibody(SL1258R), Dilution: 1 μ g in 100 μ L
1X PBS containing 0.5% BSA;

Isotype Control Antibody: Rabbit IgG(orange) ,used under the same conditions);

Secondary Antibody: Goat anti-rabbit IgG-PE(white blue), Dilution: 1:200 in 1 X
PBS containing 0.5% BSA.

Protocol

The cells were fixed with 2% paraformaldehyde (10 min) . Primary antibody (SL1258R) were incubated for 30 min on the ice, followed by 1 X PBS containing 0.5% BSA + 1 0% goat serum (15 min) to block non-specific protein-protein interactions. Then the Goat Anti-rabbit IgG/PE antibody was added into the blocking buffer mentioned above to react with the primary antibody at 1/200

	dilution for 30 min on ice. Acquisition of 20,000 events was performed.
--	---

www.sunlongbiotech.com