



Rabbit Anti-PDLIM2 antibody

SL12600R

Product Name:	PDLIM2
Chinese Name:	PDLIM2蛋白抗体
Alias:	FLJ34715; MYSTIQUE; OTTHUMP00000162522; OTTHUMP00000205197; OTTHUMP00000205198; OTTHUMP00000205199; OTTHUMP00000205200; OTTHUMP00000205202; OTTHUMP00000205203; PDLI2_HUMAN; Pdlim2; PDZ and LIM domain 2 (mystique); PDZ and LIM domain protein 2; PDZ-LIM protein mystique; SLIM; Stat-interacting LIM protein.
Organism Species:	Rabbit
Clonality:	Polyclonal
React Species:	Human,Mouse,Rat,Dog,Pig,Horse,
Applications:	ELISA=1:500-1000IHC-P=1:400-800IHC-F=1:400-800ICC=1:100-500IF=1:100-500 (Paraffin sections need antigen repair) not yet tested in other applications. optimal dilutions/concentrations should be determined by the end user.
Molecular weight:	37kDa
Cellular localization:	The nucleuscytoplasmic
Form:	Lyophilized or Liquid
Concentration:	1mg/ml
immunogen:	KLH conjugated synthetic peptide derived from human PDLIM2:31-130/352
Lsotype:	IgG
Purification:	affinity purified by Protein A
Storage Buffer:	0.01M TBS(pH7.4) with 1% BSA, 0.03% Proclin300 and 50% Glycerol.
Storage:	Store at -20 °C for one year. Avoid repeated freeze/thaw cycles. The lyophilized antibody is stable at room temperature for at least one month and for greater than a year when kept at -20°C. When reconstituted in sterile pH 7.4 0.01M PBS or diluent of antibody the antibody is stable for at least two weeks at 2-4 °C.
PubMed:	PubMed
Product Detail:	This gene encodes a member of the ALP subfamily of PDZ-LIM domain proteins. The encoded protein suppresses anchorage-dependent growth and promotes cell migration and adhesion through interactions with the actin cytoskeleton via the PDZ domain. The

encoded protein is also a putative tumor suppressor protein, and decreased expression of this gene is associated with several malignancies including breast cancer and adult T-cell leukemia. Alternatively spliced transcript variants encoding multiple isoforms have been observed for this gene. [provided by RefSeq, Oct 2011]

Function:

Probable adapter protein located at the actin cytoskeleton that promotes cell attachment. Necessary for the migratory capacity of epithelial cells. Overexpression enhances cell adhesion to collagen and fibronectin and suppresses anchorage independent growth. May contribute to tumor cell migratory capacity.

Subcellular Location:

Cytoplasm > cytoskeleton; Nucleus; Cytoplasm. Nucleus. May be partially nuclear and Cytoplasm > cytoskeleton. Colocalizes with beta-1 integrin (ITGB1) and alpha-actinin but not with paxillin.

Similarity:

Contains 1 LIM zinc-binding domain.

Contains 1 PDZ (DHR) domain.

SWISS:

Q96JY6

Gene ID:

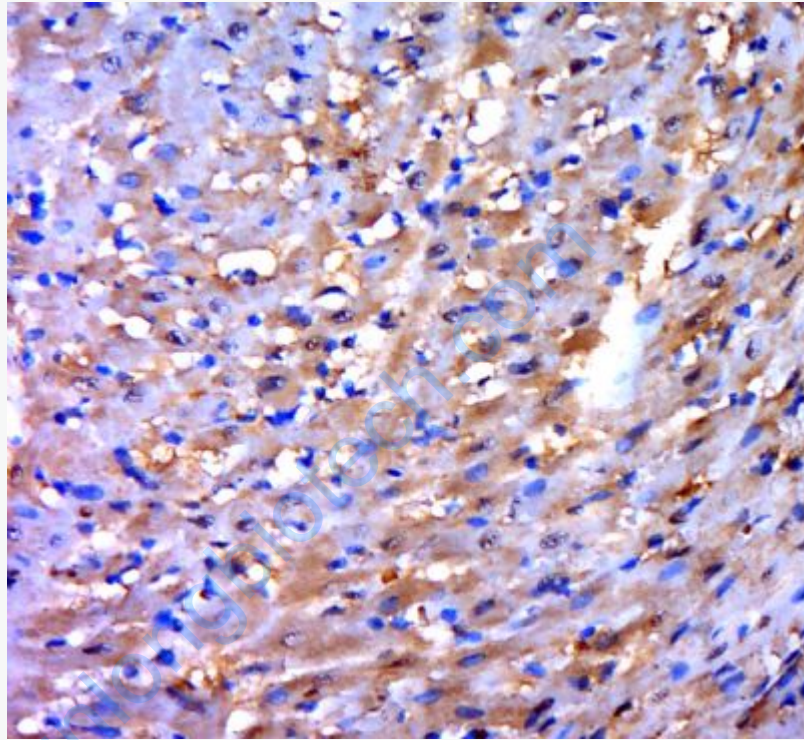
64236

Database links:

- [Entrez Gene: 64236](#) Human
- [Entrez Gene: 213019](#) Mouse
- [Entrez Gene: 290354](#) Rat
- [Omim: 609722](#) Human
- [SwissProt: Q96JY6](#) Human
- [SwissProt: Q8R1G6](#) Mouse
- [SwissProt: Q6AYD6](#) Rat
- [Unigene: 632034](#) Human
- [Unigene: 283968](#) Mouse
- [Unigene: 105730Rat](#)

Important Note:

This product as supplied is intended for research use only, not for use in human, therapeutic or diagnostic applications.



Picture:

Paraformaldehyde-fixed, paraffin embedded (rat heart tissue); Antigen retrieval by boiling in sodium citrate buffer (pH6.0) for 15min; Block endogenous peroxidase by 3% hydrogen peroxide for 20 minutes; Blocking buffer (normal goat serum) at 37°C for 30min; Antibody incubation with (PDLIM2) Polyclonal Antibody, Unconjugated (SL12600R) at 1:400 overnight at 4°C, followed by a conjugated secondary (sp-0024) for 20 minutes and DAB staining.