



Rabbit Anti-phospho-PKC zeta (Thr560) antibody

SL12690R

Product Name:	phospho-PKC zeta (Thr560)
Chinese Name:	磷酸化蛋白激酶C zeta 抗体
Alias:	PKC zeta (phospho T560); p-PKC zeta (phospho T560); 14-3-3-zetaisoform; AI098070; aPKCzeta; C80388; EC 2.7.11.13; KPCZ_HUMAN; nPKC zeta; nPKC-zeta; OTTHUMP00000001368; OTTHUMP00000044160; PKC 2; PKC ZETA; PKC2; Pkcz; PKCZETA; PKM-zeta, included; PRKCZ; Protein kinase C zeta; Protein kinase C zeta form; Protein kinase C zeta type; r14-3-3; R74924; zetaPKC.
Organism Species:	Rabbit
Clonality:	Polyclonal
React Species:	Human,Mouse,Rat,Dog,Pig,Cow,Horse,Rabbit,Sheep,
Applications:	WB=1:500-2000ELISA=1:500-1000IHC-P=1:400-800IHC-F=1:400-800ICC=1:100-500IF=1:100-500 (Paraffin sections need antigen repair) not yet tested in other applications. optimal dilutions/concentrations should be determined by the end user.
Molecular weight:	67kDa
Cellular localization:	cytoplasmic
Form:	Lyophilized or Liquid
Concentration:	1mg/ml
immunogen:	KLH conjugated synthesised phosphopeptide derived from human PKC zeta around the phosphorylation site of Thr560:QL(p-T)PD
Lsotype:	IgG
Purification:	affinity purified by Protein A
Storage Buffer:	0.01M TBS(pH7.4) with 1% BSA, 0.03% Proclin300 and 50% Glycerol.
Storage:	Store at -20 °C for one year. Avoid repeated freeze/thaw cycles. The lyophilized antibody is stable at room temperature for at least one month and for greater than a year when kept at -20°C. When reconstituted in sterile pH 7.4 0.01M PBS or diluent of antibody the antibody is stable for at least two weeks at 2-4 °C.
PubMed:	PubMed
Product Detail:	Protein kinase C (PKC) zeta is a member of the PKC family of serine/threonine kinases

which are involved in a variety of cellular processes such as proliferation, differentiation and secretion. Unlike the classical PKC isoenzymes which are calcium-dependent, PKC zeta exhibits a kinase activity which is independent of calcium and diacylglycerol but not of phosphatidylserine. Furthermore, it is insensitive to typical PKC inhibitors and cannot be activated by phorbol ester. Unlike the classical PKC isoenzymes, it has only a single zinc finger module. These structural and biochemical properties indicate that the zeta subspecies is related to, but distinct from other isoenzymes of PKC. Alternative splicing results in multiple transcript variants encoding different isoforms. [provided by RefSeq, Jul 2008]

Function:

This is a calcium-independent, phospholipid-dependent, serine- and threonine-specific enzyme. Phosphorylates 'Ser-311' of RELA subunit of NF-kappa-B. PKC is activated by diacylglycerol which in turn phosphorylates a range of cellular proteins. PKC also serves as the receptor for phorbol esters, a class of tumor promoters. Subunit of a quaternary complex that plays a central role in epithelial cell polarization.

Subunit:

Forms a ternary complex with SQSTM1 and KCNAB2.

Subcellular Location:

Cytoplasm. Endosome. Cell junction. In the retina, localizes in the terminals of the rod bipolar cells (By similarity). Associates with endosomes. Presence of KRIT1, CDH5 and RAP1B is required for its localization to the cell junction.

Tissue Specificity:

Expressed in brain, and to a lesser extent in lung, kidney and testis.

Post-translational modifications:

CDH5 is required for its phosphorylation at Thr-410.

Similarity:

Belongs to the protein kinase superfamily.
AGC Ser/Thr protein kinase family.
PKC subfamily.
Contains 1 AGC-kinase C-terminal domain.
Contains 1 OPR domain.
Contains 1 phorbol-ester/DAG-type zinc finger.
Contains 1 protein kinase domain.

SWISS:

Q05513

Gene ID:

5590

Database links:

[Entrez Gene: 5590](#) Human

[Entrez Gene: 18762](#) Mouse

[Entrez Gene: 25522](#) Rat

[Omim: 176982](#) Human

[SwissProt: Q05513](#) Human

[SwissProt: Q02956](#) Mouse

[SwissProt: P09217](#) Rat

[Unigene: 496255](#) Human

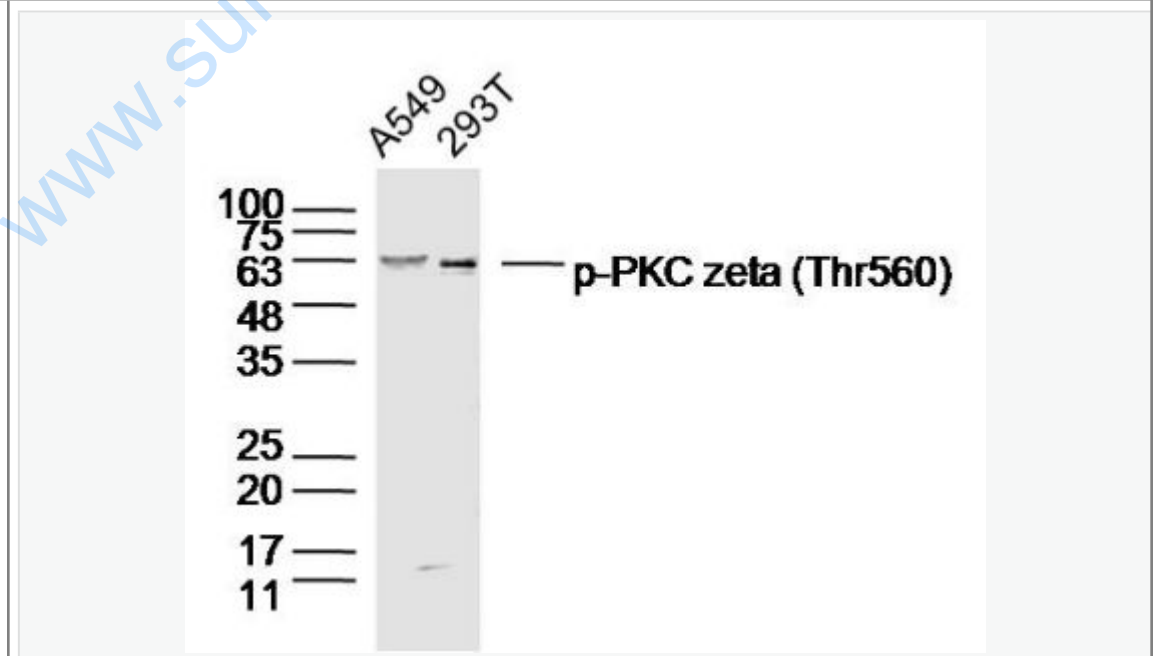
[Unigene: 28561](#) Mouse

[Unigene: 1109](#) Rat

Important Note:

This product as supplied is intended for research use only, not for use in human, therapeutic or diagnostic applications.

Picture:



Sample:

A549 (Human) CellLysate at 40 ug

293T (Human) CellLysate at 40 ug

Primary: Anti-p-PKC zeta (Thr560)(SL12690R)at 1/300 dilution

Secondary: IRDye800CW Goat Anti-RabbitIgG at 1/20000 dilution

Predicted band size: 67kD

Observed band size: 67kD

www.sunlongbiotech.com