



## Rabbit Anti-PKIB antibody

SL12692R

<b>Product Name:</b>	PKIB
<b>Chinese Name:</b>	蛋白激酶抑制蛋白β抗体
<b>Alias:</b>	cAMP dependent protein kinase inhibitor 2; cAMP-dependent protein kinase inhibitor beta; FLJ23817; IPKB_HUMAN; OTTHUMP00000017115; OTTHUMP00000017116; OTTHUMP00000017117; PKI-beta; PKIB; PRKACN2; Protein kinase (cAMP dependent, catalytic) inhibitor beta.
<b>Organism Species:</b>	Rabbit
<b>Clonality:</b>	Polyclonal
<b>React Species:</b>	Human,Mouse,Rat,
<b>Applications:</b>	ELISA=1:500-1000IHC-P=1:400-800IHC-F=1:400-800ICC=1:100-500IF=1:100-500 (Paraffin sections need antigen repair) not yet tested in other applications. optimal dilutions/concentrations should be determined by the end user.
<b>Molecular weight:</b>	8kDa
<b>Cellular localization:</b>	cytoplasmic
<b>Form:</b>	Lyophilized or Liquid
<b>Concentration:</b>	1mg/ml
<b>immunogen:</b>	KLH conjugated synthetic peptide derived from human PKIB:11-60/78
<b>Lsotype:</b>	IgG
<b>Purification:</b>	affinity purified by Protein A
<b>Storage Buffer:</b>	0.01M TBS(pH7.4) with 1% BSA, 0.03% Proclin300 and 50% Glycerol.
<b>Storage:</b>	Store at -20 °C for one year. Avoid repeated freeze/thaw cycles. The lyophilized antibody is stable at room temperature for at least one month and for greater than a year when kept at -20°C. When reconstituted in sterile pH 7.4 0.01M PBS or diluent of antibody the antibody is stable for at least two weeks at 2-4 °C.
<b>PubMed:</b>	<a href="#">PubMed</a>
<b>Product Detail:</b>	This gene encodes a member of the cAMP-dependent protein kinase inhibitor family. The encoded protein may play a role in the protein kinase A (PKA) pathway by interacting with the catalytic subunit of PKA, and overexpression of this gene may play a role in prostate cancer. Alternatively spliced transcript variants encoding multiple

isoforms have been observed for this gene. [provided by RefSeq, Jul 2012]

**Function:**

Extremely potent competitive inhibitor of cAMP-dependent protein kinase activity, this protein interacts with the catalytic subunit of the enzyme after the cAMP-induced dissociation of its regulatory chains.

**Subcellular Location:**

cytoplasm.

**Similarity:**

Belongs to the PKI family.

**SWISS:**

Q9C010

**Gene ID:**

5570

**Database links:**

[Entrez Gene: 5570](#) Human

[Entrez Gene: 18768](#) Mouse

[Omim: 606914](#) Human

[SwissProt: Q9C010](#) Human

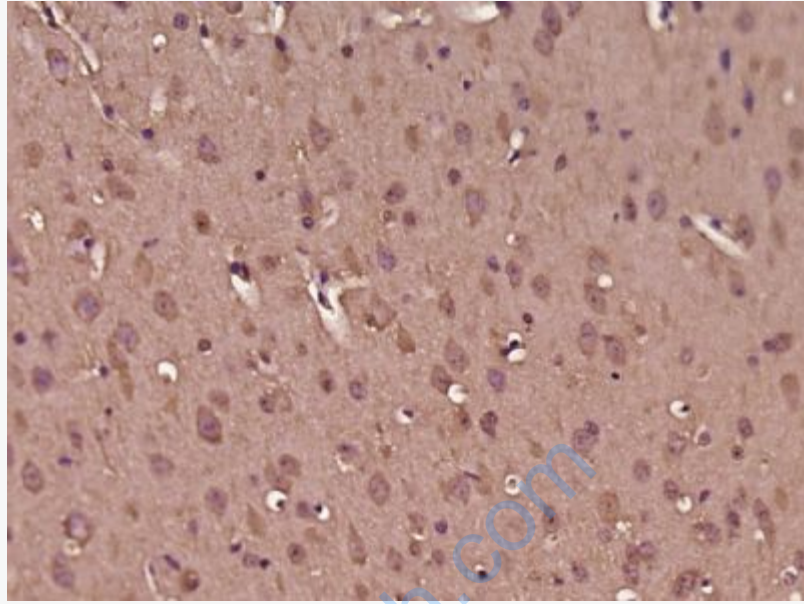
[SwissProt: Q04758](#) Mouse

[Unigene: 726217](#) Human

[Unigene: 262135](#) Mouse

**Important Note:**

This product as supplied is intended for research use only, not for use in human, therapeutic or diagnostic applications.



**Picture:**

Paraformaldehyde-fixed, paraffin embedded (Mouse brain); Antigen retrieval by boiling in sodium citrate buffer (pH6.0) for 15min; Block endogenous peroxidase by 3% hydrogen peroxide for 20 minutes; Blocking buffer (normal goat serum) at 37°C for 30min; Antibody incubation with (PKIB) Polyclonal Antibody, Unconjugated (SL12692R) at 1:500 overnight at 4°C, followed by a conjugated secondary (sp-0023) for 20 minutes and DAB staining.