



Rabbit Anti-ZNF161 antibody

SL12791R

Product Name:	ZNF161
Chinese Name:	血管内皮Zinc finger protein1抗体
Alias:	DB1; MGC82370; Putative transcription factor DB1; Vascular endothelial zinc finger 1; VEZF1; VEZF1 HUMAN; Zinc finger protein 161; ZNF161.
Organism Species:	Rabbit
Clonality:	Polyclonal
React Species:	Human,Mouse,Rat,Chicken,Dog,Pig,Cow,Horse,Rabbit,Sheep,
Applications:	WB=1:500-2000ELISA=1:500-1000IHC-P=1:400-800IHC-F=1:400-800ICC=1:100-500IF=1:100-500 (Paraffin sections need antigen repair) not yet tested in other applications. optimal dilutions/concentrations should be determined by the end user.
Molecular weight:	57kDa
Cellular localization:	The nucleus
Form:	Lyophilized or Liquid
Concentration:	1mg/ml
immunogen:	KLH conjugated synthetic peptide derived from human ZNF161:181-280/521
Lsotype:	IgG
Purification:	affinity purified by Protein A
Storage Buffer:	0.01M TBS(pH7.4) with 1% BSA, 0.03% Proclin300 and 50% Glycerol.
Storage:	Store at -20 °C for one year. Avoid repeated freeze/thaw cycles. The lyophilized antibody is stable at room temperature for at least one month and for greater than a year when kept at -20°C. When reconstituted in sterile pH 7.4 0.01M PBS or diluent of antibody the antibody is stable for at least two weeks at 2-4 °C.
PubMed:	PubMed
Product Detail:	Transcriptional regulatory proteins containing tandemly repeated zinc finger domains are thought to be involved in both normal and abnormal cellular proliferation and differentiation. ZNF161 is a C2H2-type zinc finger protein (Koyano-Nakagawa et al., 1994 [PubMed 8035792]). See MIM 603971 for general information on zinc finger proteins.[supplied by OMIM, Sep 2008]

Function:

Transcriptional regulatory proteins containing tandemly repeated zinc finger domains are thought to be involved in both normal and abnormal cellular proliferation and differentiation. ZNF161 is a C2H2-type zinc finger protein (Koyano-Nakagawa et al., 1994 [PubMed 8035792]). See MIM 603971 for general information on zinc finger proteins.[supplied by OMIM, Sep 2008]

Subcellular Location:

Nucleus.

Tissue Specificity:

Ubiquitously expressed. Highest levels in skeletal muscle and kidney.

Similarity:

Belongs to the krueppel C2H2-type zinc-finger protein family. Contains 6 C2H2-type zinc fingers.

SWISS:

Q14119

Gene ID:

7716

Database links:

[Entrez Gene: 7716](#) Human

[Entrez Gene: 22344](#) Mouse

[Entrez Gene: 287615](#) Rat

[Omim: 606747](#) Human

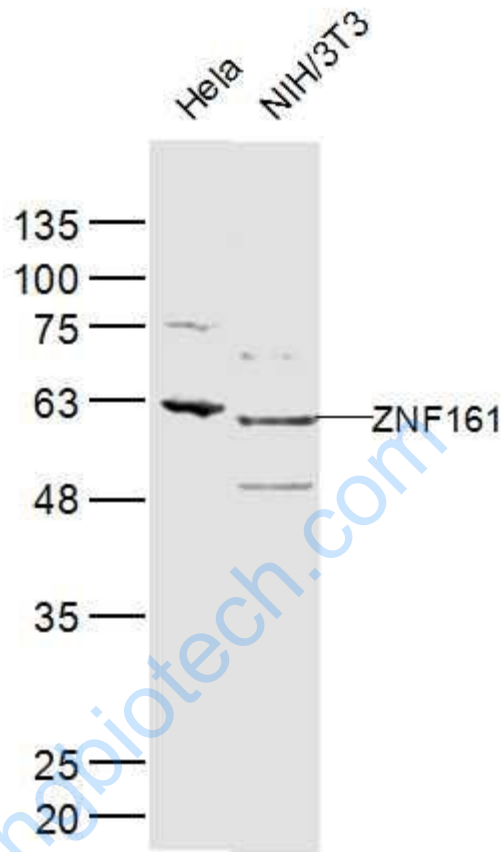
[SwissProt: Q14119](#) Human

[Unigene: 463569](#) Human

Important Note:

This product as supplied is intended for research use only, not for use in human, therapeutic or diagnostic applications.

Picture:



Sample:

Hela(Human) Cell Lysate at 40 ug

NIH/3T3(Human) Cell Lysate at 40 ug

Primary: Anti-ZNF161 (SL12791R) at 1/300 dilution

Secondary: IRDye800CW Goat Anti-Rabbit IgG at 1/20000 dilution

Predicted band size: 57 kD

Observed band size: 57 kD