



## Rabbit Anti-ETS1 antibody

SL1285R

<b>Product Name:</b>	ETS1
<b>Chinese Name:</b>	转录因子家族ETS1抗体
<b>Alias:</b>	Avian erythroblastosis virus E26 (v ets) oncogene homolog 1; C ets 1 protein; ETS 1; Ets protein; ETS-1; ETS1 protein; ETS1_HUMAN; EWSR 2; EWSR2; FLJ10768; p54; Protein C-ets-1; v ets avian erythroblastosis virus E2 oncogene homolog; v ets avian erythroblastosis virus E26 oncogene homolog 1; v ets erythroblastosis virus E26 oncogene homolog 1; v-ets erythroblastosis virus E26 oncogene homolog 1.
<b>Organism Species:</b>	Rabbit
<b>Clonality:</b>	Polyclonal
<b>React Species:</b>	Human,Mouse,Rat,Chicken,Dog,Pig,Cow,Horse,Rabbit,Guinea Pig,G
<b>Applications:</b>	WB=1:500-2000ELISA=1:500-1000IHC-P=1:400-800IHC-F=1:400-800Flow-Cyt=1ug/TestIF=1:100-500 (Paraffin sections need antigen repair) not yet tested in other applications. optimal dilutions/concentrations should be determined by the end user.
<b>Molecular weight:</b>	49kDa
<b>Cellular localization:</b>	The nucleus
<b>Form:</b>	Lyophilized or Liquid
<b>Concentration:</b>	1mg/ml
<b>immunogen:</b>	KLH conjugated synthetic peptide derived from human Ets1:321-441/441
<b>Lsotype:</b>	IgG
<b>Purification:</b>	affinity purified by Protein A
<b>Storage Buffer:</b>	0.01M TBS(pH7.4) with 1% BSA, 0.03% Proclin300 and 50% Glycerol.
<b>Storage:</b>	Store at -20 °C for one year. Avoid repeated freeze/thaw cycles. The lyophilized antibody is stable at room temperature for at least one month and for greater than a year when kept at -20°C. When reconstituted in sterile pH 7.4 0.01M PBS or diluent of antibody the antibody is stable for at least two weeks at 2-4 °C.
<b>PubMed:</b>	<a href="#">PubMed</a>
<b>Product Detail:</b>	This gene encodes a member of the ETS family of transcription factors, which are defined by the presence of a conserved ETS DNA-binding domain that recognizes the core consensus DNA sequence GGAA/T in target genes. These proteins function either

as transcriptional activators or repressors of numerous genes, and are involved in stem cell development, cell senescence and death, and tumorigenesis. Alternatively spliced transcript variants encoding different isoforms have been described for this gene.[provided by RefSeq, Jul 2011].

**Function:**

Transcription factor.

**Subunit:**

Interacts with MAF and MAFB. Interacts with PAX5, the interaction alters DNA-binding properties. Binds to DAXX. Interacts with UBE2I.

**Subcellular Location:**

Nucleus.

**Post-translational modifications:**

Sumoylated on Lys-15 and Lys-227, preferentially by SUMO2; which inhibits transcriptional activity.

Ubiquitinated; which induces proteasomal degradation.

**Similarity:**

Belongs to the ETS family.

Contains 1 ETS DNA-binding domain.

Contains 1 PNT (pointed) domain.

**SWISS:**

P14921

**Gene ID:**

2113

**Database links:**

[Entrez Gene: 540313](#)Cow

[Entrez Gene: 2113](#)Human

[Entrez Gene: 23871](#)Mouse

[Entrez Gene: 24356](#)Rat

[Omim: 164720](#)Human

[SwissProt: P13474](#)Chicken

[SwissProt: P15062](#)Chicken

[SwissProt: P14921](#)Human

[SwissProt: P27577](#)Mouse

[SwissProt: P41156](#)Rat

[Unigene: 369438](#)Human

[Unigene: 292415](#)Mouse

[Unigene: 88756](#)Rat

**Important Note:**

This product as supplied is intended for research use only, not for use in human, therapeutic or diagnostic applications.

Ets家族成员在胚胎发生早期的血细胞生成和血管发生及胚胎发育后期的组织发生中发挥重要的调控作用。

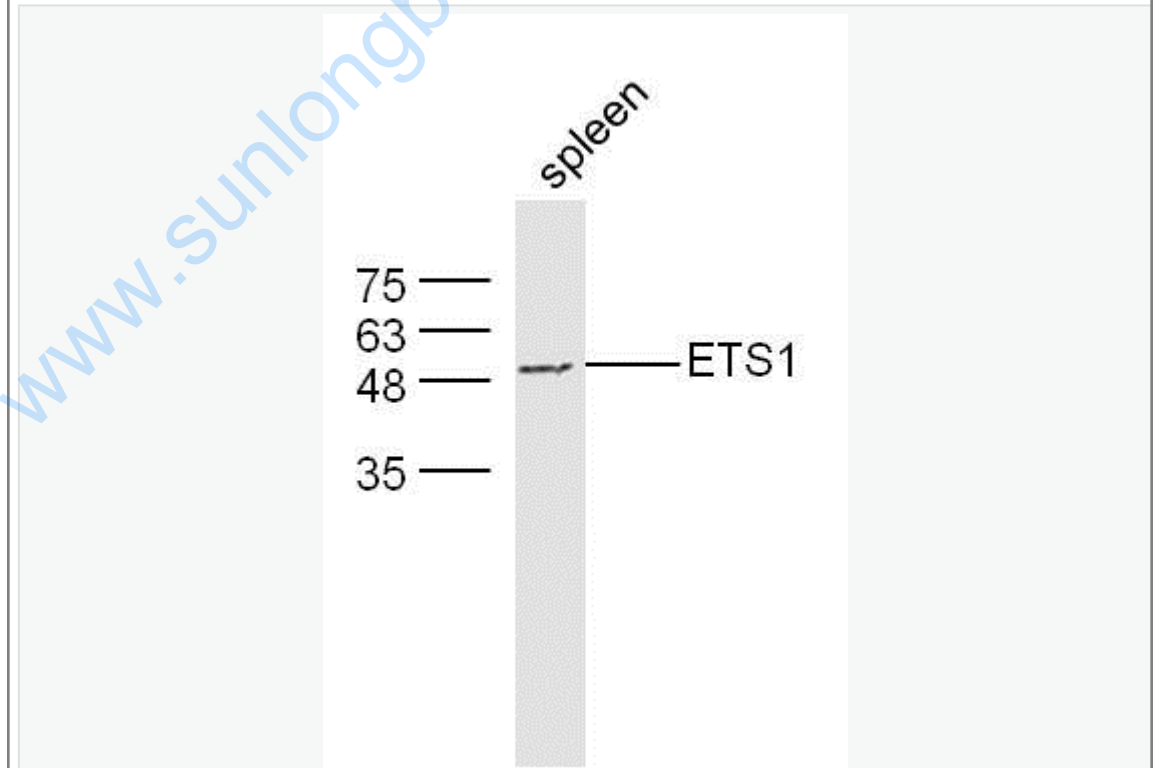
成年后Ets在许多组织, 如造血组织、血管、脑和中枢神经系统、乳腺、子宫内膜、卵巢、睾丸、肾和肺中均有表达。

由于Ets转录因子不同成员在胚胎发育过程中的特异性的表达与其功能关系密切。

Ets家族的重要成员Ets-

1的表达与胰腺癌、甲状腺癌、乳腺癌、胃癌、子宫内膜癌、口腔鳞癌、肝细胞性肝癌(HCC)的发生、转移有很重要的关系。

Picture:



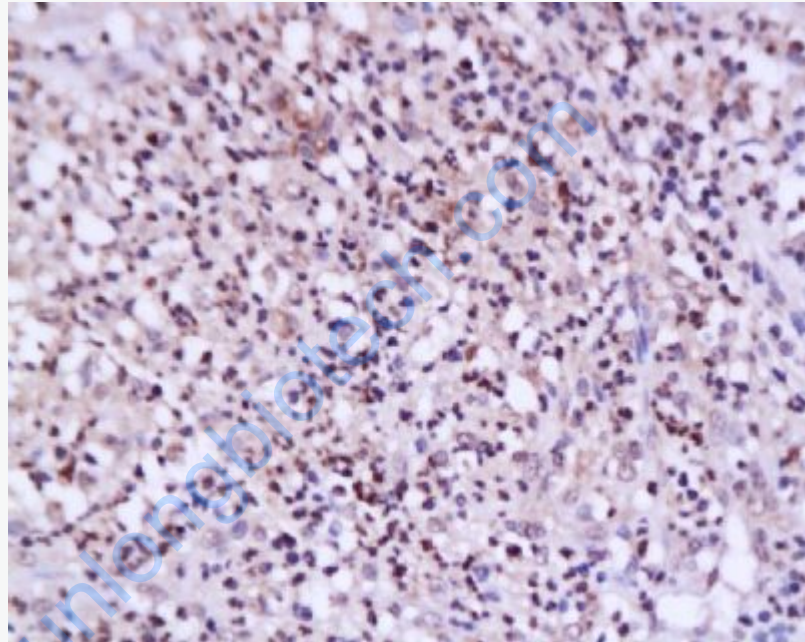
Sample:Spleen (Mouse) Lysate at 30 ug

Primary: Anti- ETS1 (SL1285R) at 1/300 dilution

Secondary: IRDye800CW Goat Anti-Mouse IgG at 1/20000 dilution

Predicted band size: 49 kD

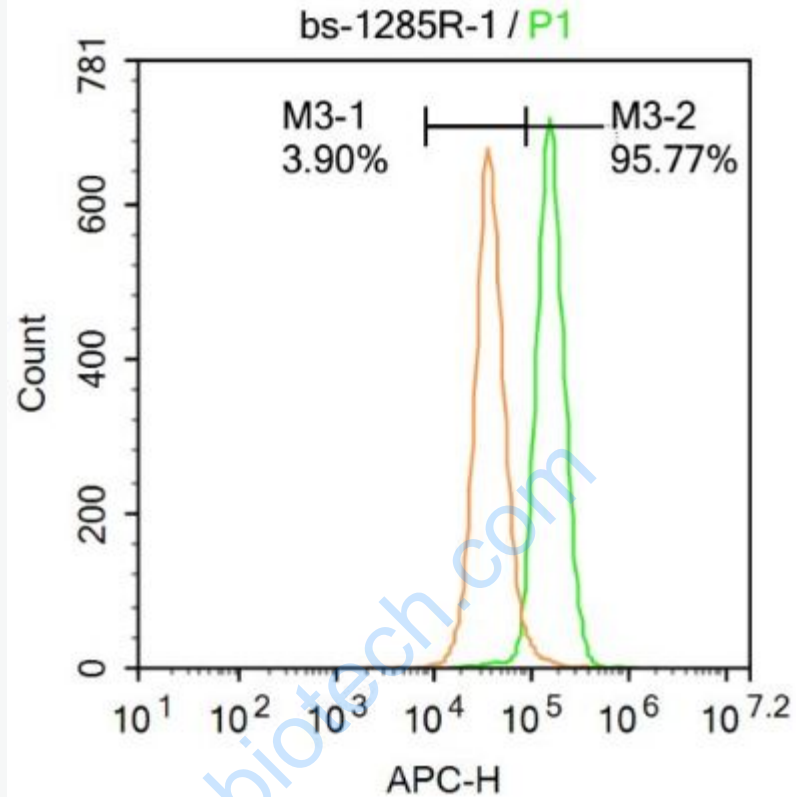
Observed band size: 49 kD



Tissue/cell: human breast carcinoma; 4% Paraformaldehyde-fixed and paraffin-embedded;

Antigen retrieval: citrate buffer ( 0.01M, pH 6.0 ), Boiling bathing for 15min; Block endogenous peroxidase by 3% Hydrogen peroxide for 30min; Blocking buffer (normal goat serum,C-0005) at 37°C for 20 min;

Incubation: Anti-ETS1 Polyclonal Antibody, Unconjugated(SL1285R) 1:200, overnight at 4°C, followed by conjugation to the secondary antibody(SP-0023) and DAB(C-0010) staining



Blank control: A431.

Primary Antibody (green line): Rabbit Anti-ETS1 antibody (SL1285R)

Dilution:  $1\mu\text{g} / 10^6$  cells;

Isotype Control Antibody (orange line): Rabbit IgG .

Secondary Antibody : Goat anti-rabbit IgG-AF647

Dilution:  $1\mu\text{g} / \text{test}$ .

Protocol

The cells were fixed with 4% PFA (10min at room temperature)and then permeabilized with 90% ice-cold methanol for 20 min at  $-20^{\circ}\text{C}$ . The cells were then incubated in 5%BSA to block non-specific protein-protein interactions for 30 min at room temperature .Cells stained with Primary Antibody for 30 min at room

temperature. The secondary antibody used for 40 min at room temperature.

Acquisition of 20,000 events was performed.

[www.sunlongbiotech.com](http://www.sunlongbiotech.com)