




Rabbit Anti-beta IV Tubulin antibody

SL12861R

Product Name:	beta IV Tubulin
Chinese Name:	微管蛋白β4抗体
Alias:	Beta 4; Beta 4 tubulin; beta 5; MC1R; TBB4_HUMAN; TUB B4; TUBB 4; TUBB4; TUBB5; Tubulin 5 beta; Tubulin beta 3; Tubulin beta 4; Tubulin beta 4 chain; Tubulin beta 5; Tubulin beta IV; Tubulin beta-4 chain.
文献引用 	Specific References(1) SL12861R has been referenced in 1 publications. [IF=1.28] Isarangkul, Duangnate, et al. "Mitochondrial and cytoskeletal alterations are involved in the pathogenesis of hydronephrosis in ICR/Mlac-hydro mice." International Journal of Clinical and Experimental Medicine 8.6 (2015): 9192-9204. IHC-P;Mouse. PubMed:26309577
Organism Species:	Rabbit
Clonality:	Polyclonal
React Species:	Human,Mouse,Rat,
Applications:	WB=1:500-2000ELISA=1:500-1000IHC-P=1:400-800IHC-F=1:400-800ICC=1:100-500IF=1:100-500 (Paraffin sections need antigen repair) not yet tested in other applications. optimal dilutions/concentrations should be determined by the end user.
Molecular weight:	50kDa
Cellular localization:	cytoplasmic
Form:	Lyophilized or Liquid
Concentration:	1mg/ml
immunogen:	KLH conjugated synthetic peptide derived from human TUBB4/beta IV Tubulin:166-280/444
Lsotype:	IgG
Purification:	affinity purified by Protein A
Storage Buffer:	0.01M TBS(pH7.4) with 1% BSA, 0.03% Proclin300 and 50% Glycerol.
Storage:	Store at -20 °C for one year. Avoid repeated freeze/thaw cycles. The lyophilized

	antibody is stable at room temperature for at least one month and for greater than a year when kept at -20°C. When reconstituted in sterile pH 7.4 0.01M PBS or diluent of antibody the antibody is stable for at least two weeks at 2-4 °C.
PubMed:	PubMed
Product Detail:	<p>Beta III tubulin is abundant in the central and peripheral nervous systems (CNS and PNS) where it is prominently expressed during fetal and postnatal development. As exemplified in cerebellar and sympathoadrenal neurogenesis, the distribution of beta III is neuron-associated, exhibiting distinct temporospatial gradients according to the regional neuroepithelia of origin. However, transient expression of this protein is also present in the subventricular zones of the CNS comprising putative neuronal- and/or glial precursor cells, as well as in Kulchitsky neuroendocrine cells of the fetal respiratory epithelium. This temporally restricted, potentially non-neuronal expression may have implications in the identification of presumptive neurons derived from embryonic stem cells.</p> <p>Function: Tubulin is the major constituent of microtubules. It binds two moles of GTP, one at an exchangeable site on the beta chain and one at a non-exchangeable site on the alpha-chain.</p> <p>Subunit: Dimer of alpha and beta chains.</p> <p>Subcellular Location: Cytoplasm, cytoskeleton.</p> <p>Tissue Specificity:</p> <p>Post-translational modifications: Some glutamate residues at the C-terminus are polyglutamylated. This modification occurs exclusively on glutamate residues and results in polyglutamate chains on the gamma-carboxyl group. Also monoglycylated but not polyglycylated due to the absence of functional TTL10 in human. Monoglycylation is mainly limited to tubulin incorporated into axonemes (cilia and flagella) whereas glutamylation is prevalent in neuronal cells, centrioles, axonemes, and the mitotic spindle. Both modifications can coexist on the same protein on adjacent residues, and lowering glycylation levels increases polyglutamylated, and reciprocally. The precise function of such modifications is still unclear but they regulate the assembly and dynamics of axonemal microtubules.</p> <p>Similarity: Belongs to the tubulin family.</p> <p>SWISS: P04350</p>

Gene ID:
10382

Database links:

[Entrez Gene: 10382](#)Human

[Entrez Gene: 22153](#)Mouse

[Entrez Gene: 29213](#)Rat

[Omin: 602662](#)Human

[SwissProt: P04350](#)Human

[SwissProt: Q9D6F9](#)Mouse

[Unigene: 110837](#)Human

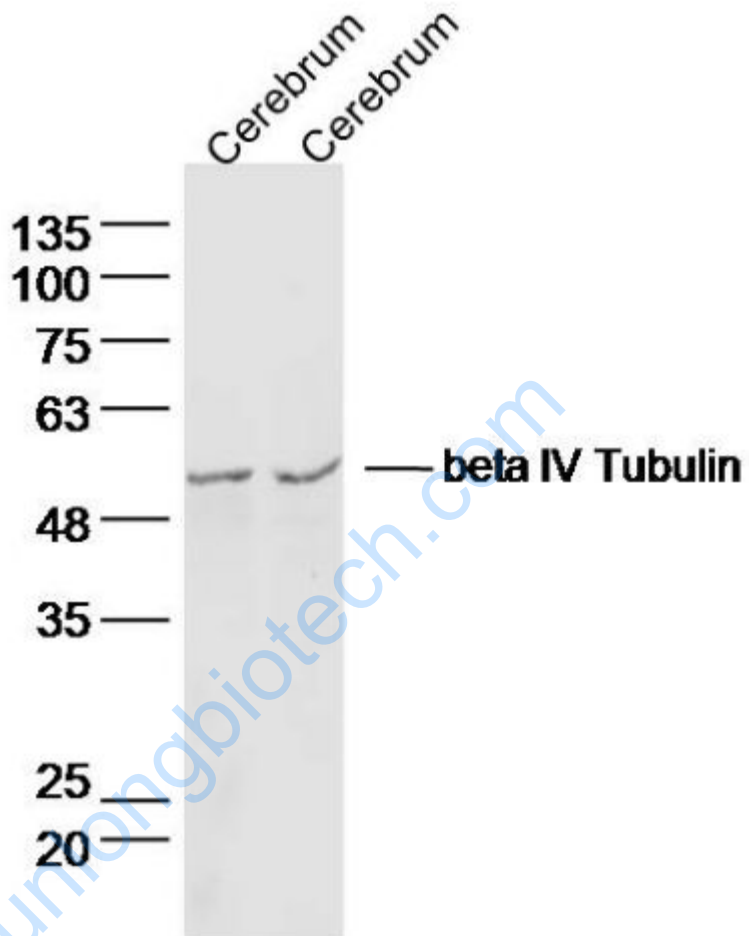
[Unigene: 7420](#)Mouse

Important Note:

This product as supplied is intended for research use only, not for use in human, therapeutic or diagnostic applications.

www.sunlongbiotech.com

Picture:



Sample:

Cerebrum (mouse) Lysate at 40 ug

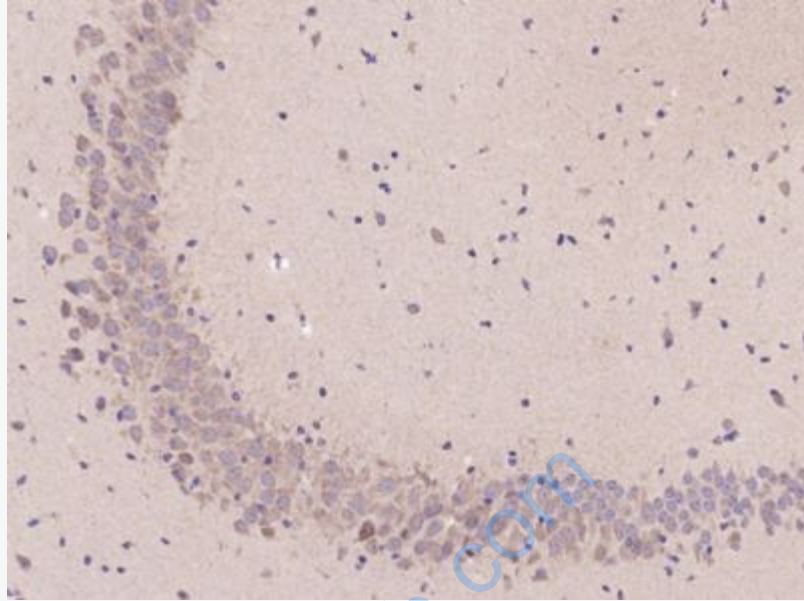
Cerebrum (mouse) Lysate at 40 ug

Primary: Anti-betaIV Tubulin (SL12861R) at 1/300 dilution

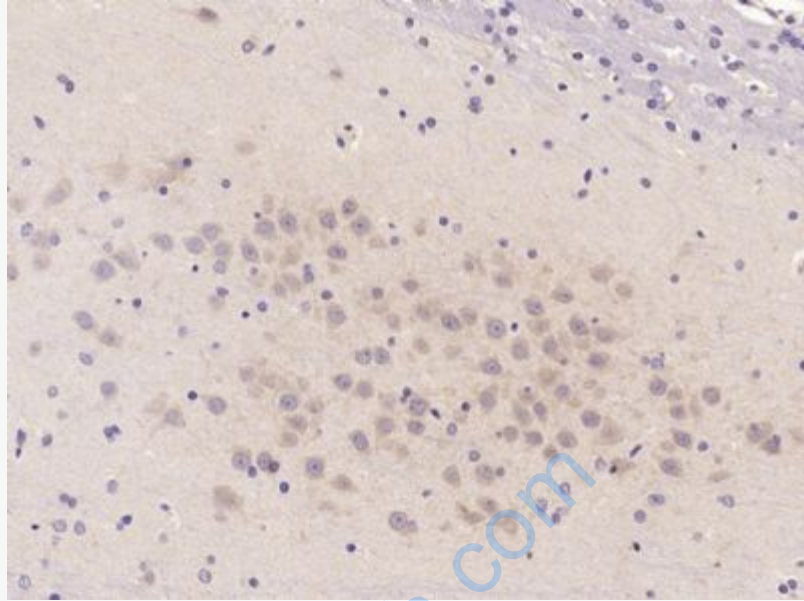
Secondary: IRDye800CW Goat Anti-Rabbit IgG at 1/20000 dilution

Predicted band size: 50 kD

Observed band size: 50 kD



Paraformaldehyde-fixed, paraffin embedded (Mouse brain); Antigen retrieval by microwave in sodium citrate buffer (pH6.0) ; Block endogenous peroxidase by 3% hydrogen peroxide for 30 minutes; Blocking buffer (3% BSA) at RT for 30min; Antibody incubation with (beta IV Tubulin) Polyclonal Antibody, Unconjugated (SL12861R) at 1:400 overnight at 4°C, followed by conjugation to the secondary antibody (labeled with HRP) and DAB staining.



Paraformaldehyde-fixed, paraffin embedded (Rat brain); Antigen retrieval by microwave in sodium citrate buffer (pH6.0) ; Block endogenous peroxidase by 3% hydrogen peroxide for 30 minutes; Blocking buffer (3% BSA) at RT for 30min; Antibody incubation with (beta IV Tubulin) Polyclonal Antibody, Unconjugated (SL12861R) at 1:400 overnight at 4°C, followed by conjugation to the secondary antibody (labeled with HRP) and DAB staining.