



Rabbit Anti-BSX antibody

SL12905R

Product Name:	BSX
Chinese Name:	脑特异性同源蛋白BSX抗体
Alias:	Brain specific homeobox; Brain specific homeobox protein homolog; BSH; BSX1; BSH_HUMAN.
Organism Species:	Rabbit
Clonality:	Polyclonal
React Species:	Human,Mouse,Rat,Dog,Pig,Cow,Horse,Rabbit,Sheep,
Applications:	WB=1:500-2000ELISA=1:500-1000IHC-P=1:400-800IHC-F=1:400-800Flow-Cyt=1µg/TestICC=1:100-500IF=1:100-500 (Paraffin sections need antigen repair) not yet tested in other applications. optimal dilutions/concentrations should be determined by the end user.
Molecular weight:	26kDa
Cellular localization:	The nucleus
Form:	Lyophilized or Liquid
Concentration:	1mg/ml
immunogen:	KLH conjugated synthetic peptide derived from human BSX:101-200/233
Lsotype:	IgG
Purification:	affinity purified by Protein A
Storage Buffer:	0.01M TBS(pH7.4) with 1% BSA, 0.03% Proclin300 and 50% Glycerol.
Storage:	Store at -20 °C for one year. Avoid repeated freeze/thaw cycles. The lyophilized antibody is stable at room temperature for at least one month and for greater than a year when kept at -20°C. When reconstituted in sterile pH 7.4 0.01M PBS or diluent of antibody the antibody is stable for at least two weeks at 2-4 °C.
PubMed:	PubMed
Product Detail:	BSX(Brain-specific homeobox protein homolog) may play a role in the determination and function of cell types in the brain. In brain, it is restricted to a few specific developing brain structures such as pineal gland, telencephalic septum, hypothalamic pre-mammillary body and arcuate nucleus. Bsx might be considered an important molecular marker for early embryonic stages of epiphysis development. It belongs to the distal-less homeobox family and contains 1 homeobox DNA-binding domain.

Function:

DNA binding protein that function as transcriptional activator. Is essential for normal postnatal growth and nursing. Is an essential factor for neuronal neuropeptide Y and agouti-related peptide function and locomotory behavior in the control of energy balance (By similarity).

Subcellular Location:

Nuclear

Similarity:

Belongs to the distal-less homeobox family.
Contains 1 homeobox DNA-binding domain.

SWISS:

Q3C1V8

Gene ID:

390259

Database links:

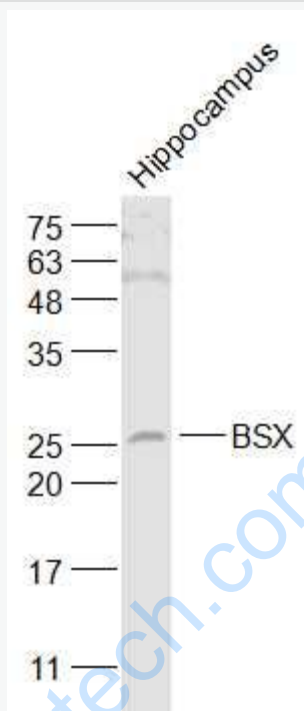
UniProtKB/Swiss-Prot: Q3C1V8.2

Important Note:

This product as supplied is intended for research use only, not for use in human, therapeutic or diagnostic applications.

www.surfgenebiotech.com

Picture:



Sample:

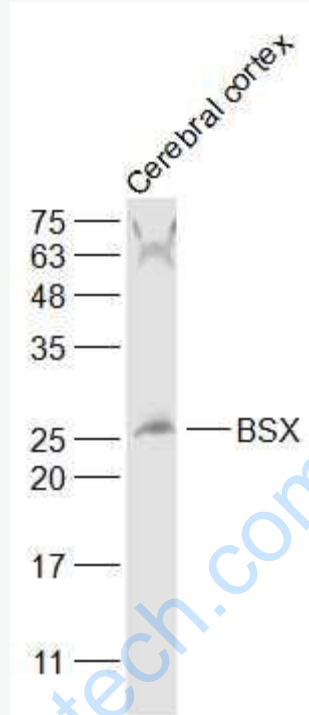
Hippocampus (Mouse) Lysate at 40 ug

Primary: Anti-BSX (SL12905R) at 1/1000 dilution

Secondary: IRDye800CW Goat Anti-Rabbit IgG at 1/20000 dilution

Predicted band size: 26 kD

Observed band size: 26 kD



Sample:

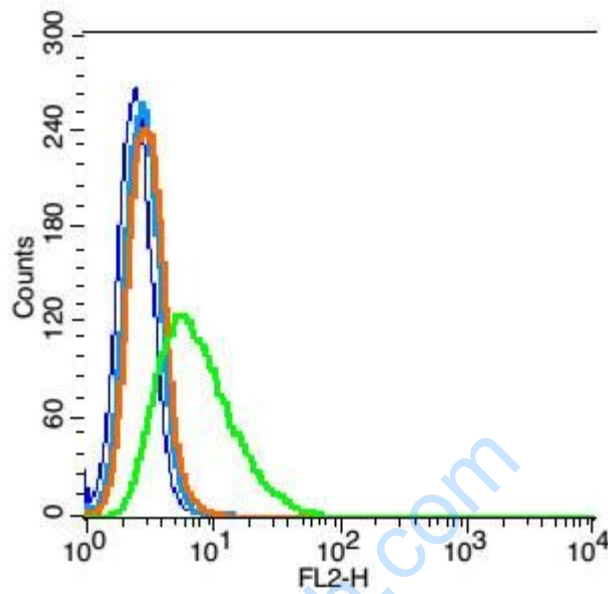
Cerebral cortex (Mouse) Lysate at 40 ug

Primary: Anti-BSX (SL12905R) at 1/1000 dilution

Secondary: IRDye800CW Goat Anti-Rabbit IgG at 1/20000 dilution

Predicted band size: 26 kD

Observed band size: 26 kD



Blank control: RSC96(blue).

Primary Antibody: Rabbit Anti-BSX antibody(SL12905R), Dilution: 1 μ g in 100 μ L
1X PBS containing 0.5% BSA;

Isotype Control Antibody(blue): Rabbit IgG(fixed with 2% paraformaldehyde (10 min) and then permeabilized with ice-cold 90% methanol for 30 min on ice) ,used under the same conditions);

Secondary Antibody: Goat anti-rabbit IgG-PE(white blue), Dilution: 1:200 in 1 X PBS containing 0.5% BSA.