



Rabbit Anti-Parvalbumin antibody

SL1299R

Product Name:	Parvalbumin
Chinese Name:	细小清蛋白抗体
Alias:	D22S749; MGC116759; Parvalbumin alpha; PRVA HUMAN; PVALB.
Organism Species:	Rabbit
Clonality:	Polyclonal
React Species:	Human,Mouse,Rat,Chicken,Pig,Cow,Horse,
Applications:	ELISA=1:500-1000IHC-P=1:400-800IHC-F=1:400-800IF=1:100-500 (Paraffin sections need antigen repair) not yet tested in other applications. optimal dilutions/concentrations should be determined by the end user.
Molecular weight:	12kDa
Cellular localization:	The nucleus Extracellular matrix
Form:	Lyophilized or Liquid
Concentration:	1mg/ml
immunogen:	KLH conjugated synthetic peptide derived from human Parvalbumin:7-110/110
Lsotype:	IgG
Purification:	affinity purified by Protein A
Storage Buffer:	0.01M TBS(pH7.4) with 1% BSA, 0.03% Proclin300 and 50% Glycerol.
Storage:	Store at -20 °C for one year. Avoid repeated freeze/thaw cycles. The lyophilized antibody is stable at room temperature for at least one month and for greater than a year when kept at -20°C. When reconstituted in sterile pH 7.4 0.01M PBS or diluent of antibody the antibody is stable for at least two weeks at 2-4 °C.
PubMed:	PubMed
Product Detail:	<p>The protein encoded by this gene is a high affinity calcium ion-binding protein that is structurally and functionally similar to calmodulin and troponin C. The encoded protein is thought to be involved in muscle relaxation. Belongs to the parvalbumin family. Contains 2 EF-hand domains. This protein binds two calcium ions.</p> <p>Function: In muscle, parvalbumin is thought to be involved in relaxation after contraction. It binds</p>

two calcium ions.

Similarity:

Belongs to the parvalbumin family.

Contains 2 EF-hand domains.

SWISS:

P20472

Gene ID:

5816

Database links:

[Entrez Gene: 396459](#)Chicken

[Entrez Gene: 396531](#)Chicken

[Entrez Gene: 5816](#)Human

[Entrez Gene: 19293](#)Mouse

[Entrez Gene: 25269](#)Rat

[Omim: 168890](#)Human

[SwissProt: P20472](#)Human

[SwissProt: P32848](#)Mouse

[SwissProt: P02625](#)Rat

[Unigene: 295449](#)Human

[Unigene: 2766](#)Mouse

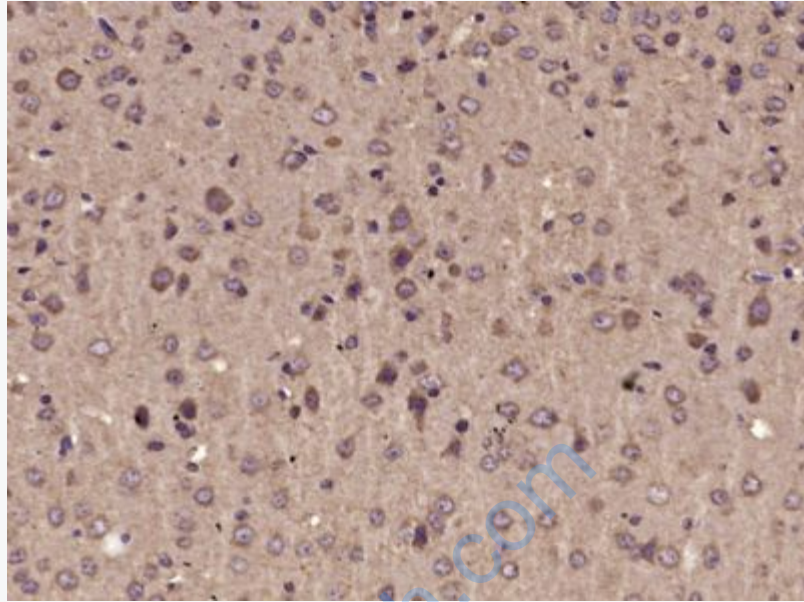
[Unigene: 2005](#)Rat

Important Note:

This product as supplied is intended for research use only, not for use in human, therapeutic or diagnostic applications.

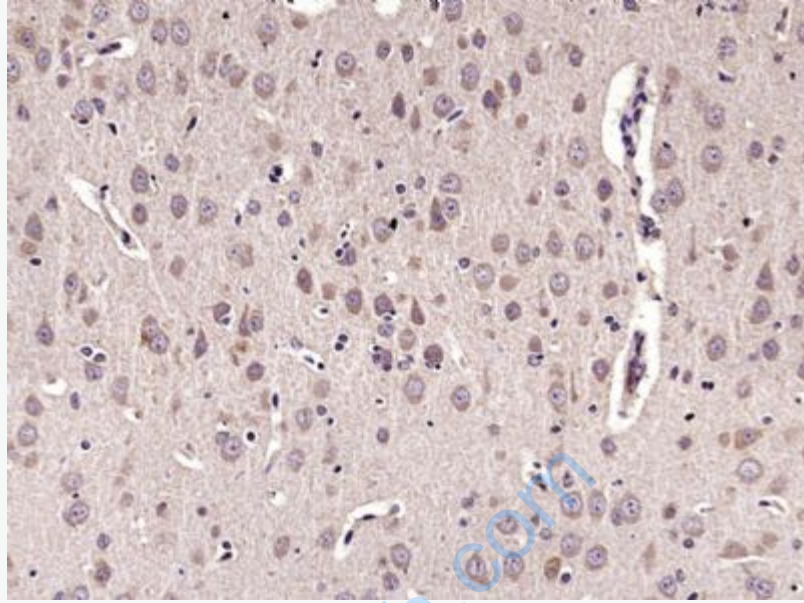
(Parvalbumin, PV)细小白蛋白属于钙Binding protein家族,是一种细胞内可溶的小Binding protein, 过去曾认为, 仅出现在哺乳动物某些肌纤维内,它与Ca²⁺有高度亲合力,与钙调蛋白竞争自由Ca²⁺,故可阻止肌浆内的Ca²⁺增高,可抗衡细胞内钙过量的发生

o



Picture:

Paraformaldehyde-fixed, paraffin embedded (Mouse brain); Antigen retrieval by microwave in sodium citrate buffer (pH6.0) ; Block endogenous peroxidase by 3% hydrogen peroxide for 30 minutes; Blocking buffer (3% BSA) at RT for 30min; Antibody incubation with (Parvalbumin) Polyclonal Antibody, Unconjugated (SL1299R) at 1:400 overnight at 4°C, followed by conjugation to the secondary antibody (labeled with HRP) and DAB staining.



Paraformaldehyde-fixed, paraffin embedded (Rat brain); Antigen retrieval by microwave in sodium citrate buffer (pH6.0) ; Block endogenous peroxidase by 3% hydrogen peroxide for 30 minutes; Blocking buffer (3% BSA) at RT for 30min; Antibody incubation with (Parvalbumin) Polyclonal Antibody, Unconjugated (SL1299R) at 1:400 overnight at 4°C, followed by conjugation to the secondary antibody (labeled with HRP) and DAB staining.