



Rabbit Anti-CCR7 antibody

SL1305R

Product Name:	CCR7
Chinese Name:	细胞表面Chemokine受体7抗体
Alias:	BLR 2; BLR2; C C chemokine receptor type 7; C C CKR 7; CC chemokine receptor 7; CC chemokine receptor type 7; CC CKR 7; CCCR7; CCR 7; CD 197; CD197; CD197 antigen; CDW197; Chemokine C C motif receptor 7; Chemokine C C receptor 7; Chemokine receptor 7-like protein; EBI 1; EBI1; Ebi1h; EBV Induced G Protein Coupled Receptor 1; Epstein Barr virus induced G protein coupled receptor; Epstein Barr virus induced gene 1; EVI 1; EVI1; Lymphocyte Specific G Protein Coupled Peptide Receptor; MGC108519; MIP 3 beta receptor; MIP3 Beta Receptor.
文献引用 PubMed :	Specific References(1) SL1305R has been referenced in 1 publications. [IF=4.20] Ge, L. P., et al. "Integration of nondegradable polystyrene and degradable gelatin in a core–sheath nanofibrous patch for pelvic reconstruction." International Journal of Nanomedicine 2015;10 3193–3201 IHC-P;Rat. PubMed:25995629
Organism Species:	Rabbit
Clonality:	Polyclonal
React Species:	Human,Mouse,Rat,Dog,
Applications:	WB=1:500-2000ELISA=1:500-1000IHC-P=1:400-800IHC-F=1:400-800Flow-Cyt=3µg/TestICC=1:100-500IF=1:100-500(Paraffin sections need antigen repair) not yet tested in other applications. optimal dilutions/concentrations should be determined by the end user.
Molecular weight:	42kDa
Cellular localization:	The cell membrane
Form:	Lyophilized or Liquid
Concentration:	1mg/ml
immunogen:	KLH conjugated synthetic peptide derived from human CCR7:25-59/379<Extracellular>
Lsotype:	IgG

Purification:	affinity purified by Protein A
Storage Buffer:	0.01M TBS(pH7.4) with 1% BSA, 0.03% Proclin300 and 50% Glycerol.
Storage:	Store at -20 °C for one year. Avoid repeated freeze/thaw cycles. The lyophilized antibody is stable at room temperature for at least one month and for greater than a year when kept at -20°C. When reconstituted in sterile pH 7.4 0.01M PBS or diluent of antibody the antibody is stable for at least two weeks at 2-4 °C.
PubMed:	PubMed
Product Detail:	<p>The protein encoded by this gene is a member of the G protein-coupled receptor family. This receptor was identified as a gene induced by the Epstein-Barr virus (EBV), and is thought to be a mediator of EBV effects on B lymphocytes. This receptor is expressed in various lymphoid tissues and activates B and T lymphocytes. It has been shown to control the migration of memory T cells to inflamed tissues, as well as stimulate dendritic cell maturation. The chemokine (C-C motif) ligand 19 (CCL19/ECL) has been reported to be a specific ligand of this receptor. [provided by RefSeq, Jul 2008]</p> <p>Function: Receptor for the MIP-3-beta chemokine. Probable mediator of EBV effects on B-lymphocytes or of normal lymphocyte functions.</p> <p>Subcellular Location: Cell membrane; Multi-pass membrane protein.</p> <p>Tissue Specificity: Expressed in various lymphoid tissues and activated B- and T-lymphocytes, strongly up-regulated in B-cells infected with Epstein-Barr virus and T-cells infected with herpesvirus 6 or 7.</p> <p>Similarity: Belongs to the G-protein coupled receptor 1 family.</p> <p>SWISS: P47774</p> <p>Gene ID: 1236</p> <p>Database links:</p> <p>Entrez Gene: 1236Human</p> <p>Entrez Gene: 12775Mouse</p> <p>Entrez Gene: 287673Rat</p> <p>Omim: 600242Human</p> <p>SwissProt: P32248Human</p>

[SwissProt: P47774](#)Mouse

[Unigene: 370036](#)Human

[Unigene: 2932](#)Mouse

[Unigene: 229736](#)Rat

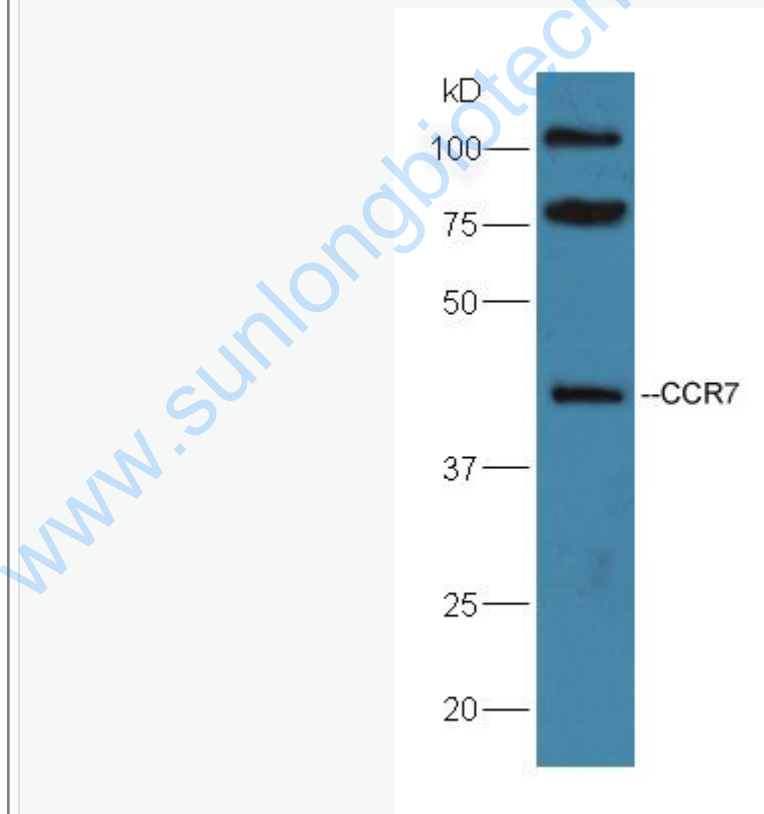
Important Note:

This product as supplied is intended for research use only, not for use in human, therapeutic or diagnostic applications.

Chemokine是当今cell factorResearch

Area的热点之一,它参与多种免疫及炎症反应,在感染、Tumour的生长与转移、组织修复及创伤愈合等病理生理过程中发挥重要作用.CCR7在Tumour的生长与转移方面起到一定的作用.

Picture:



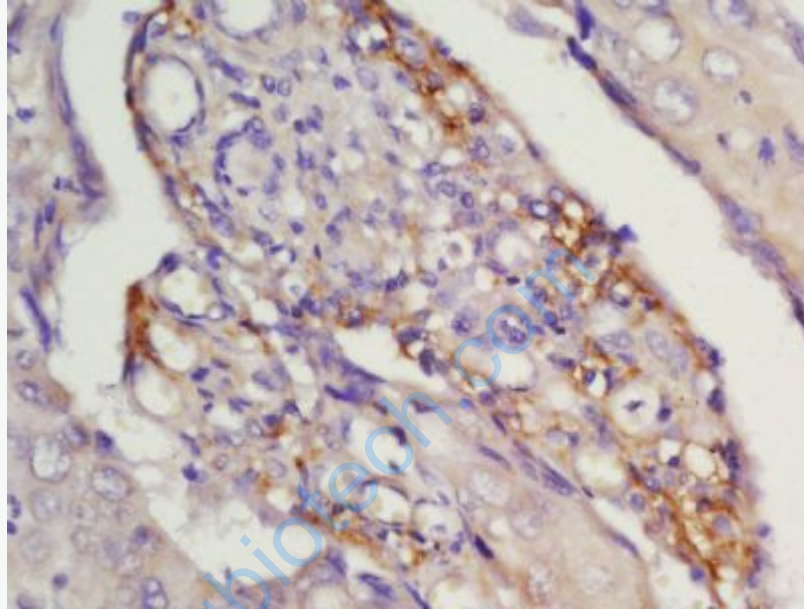
Sample:Raji Cell Lysate at 40 ug

Primary: Anti-CCR7 (SL1305R) at 1:300 dilution;

Secondary: HRP conjugated Goat-Anti-Rabbit IgG(SL1305R) at 1: 5000 dilution;

Predicted band size : 42 kD

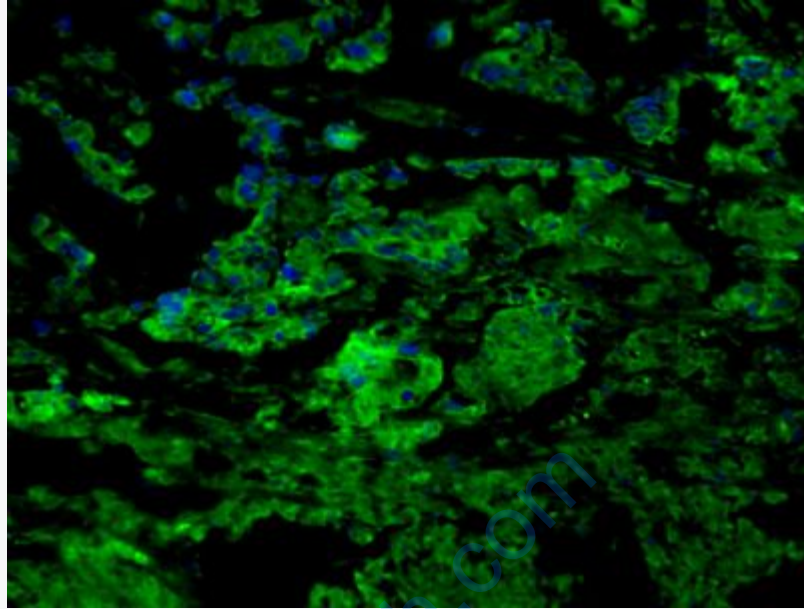
Observed band size : 42 kD



Tissue/cell: human laryngocarcinoma; 4% Paraformaldehyde-fixed and paraffin-embedded;

Antigen retrieval: citrate buffer (0.01M, pH 6.0), Boiling bathing for 15min; Block endogenous peroxidase by 3% Hydrogen peroxide for 30min; Blocking buffer (normal goat serum,C-0005) at 37°C for 20 min;

Incubation: Anti-CCR7 Polyclonal Antibody, Unconjugated(SL1305R) 1:200, overnight at 4°C, followed by conjugation to the secondary antibody(SP-0023) and DAB(C-0010) staining



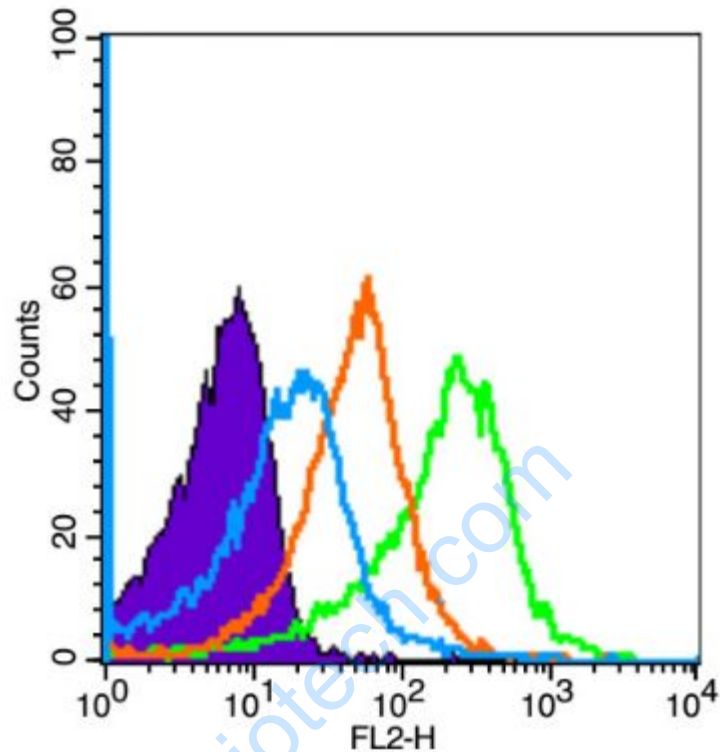
Tissue/cell: human gastric tissue;4% Paraformaldehyde-fixed and paraffin-embedded;

Antigen retrieval: citrate buffer (0.01M, pH 6.0), Boiling bathing for 15min;

Blocking buffer (normal goat serum,C-0005) at 37°C for 20 min;

Incubation: Anti-CCR7 Polyclonal Antibody, Unconjugated(SL1305R) 1:200, overnight at 4°C; The secondary antibody was Goat Anti-Rabbit IgG, FITC conjugated(SL1305R)used at 1:200 dilution for 40 minutes at 37°C.

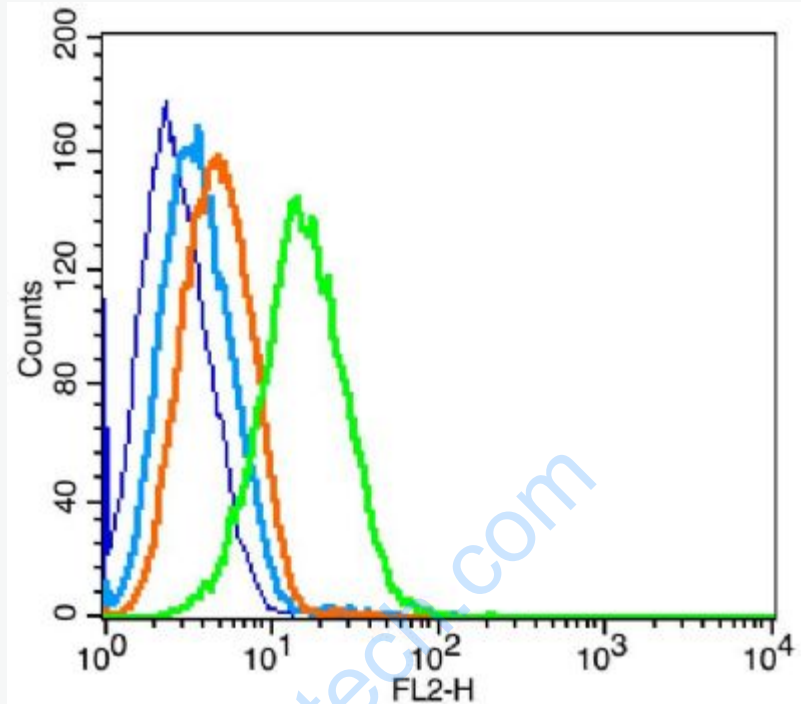
DAPI(5ug/ml,blue,C-0033) was used to stain the cell nuclei



Blank control (Black line): Mouse spleen(Black). Primary Antibody (green line): Rabbit Anti-CD4 antibody (SL1305R) Dilution: $3\mu\text{g} / 10^6$ cells; Isotype Control Antibody (orange line): Rabbit IgG-PE. Secondary Antibody (white blue line): Goat anti-rabbit IgG-PE

Dilution: $1\mu\text{g} / \text{test}$.

Protocol The cells were fixed with 4% PFA (10min at room temperature)and then permeabilized with 90% ice-cold methanol for 20 min at room temperature. The cells were then incubated in 5%BSA to block non-specific protein-protein interactions for 30 min at room temperature .Cells stained with Primary Antibody for 30 min at room temperature.The secondary antibody used for 40 min at room temperature. Acquisition of 20,000 events was performed.



Blank control: Raji(blue).

Primary Antibody: Rabbit Anti-CCR7 antibody(SL1305R), Dilution: 1 μ g in 100 μ L
1X PBS containing 0.5% BSA;

Isotype Control Antibody: Rabbit IgG(orange) ,used under the same conditions);

Secondary Antibody: Goat anti-rabbit IgG-PE(white blue), Dilution: 1:200 in 1 X
PBS containing 0.5% BSA.

Protocol

The cells were fixed with 2% paraformaldehyde (10 min) . Primary antibody (SL1305R) were incubated for 30 min on the ice, followed by 1 X PBS containing 0.5% BSA + 10% goat serum (15 min) to block non-specific protein-protein interactions. Then the Goat Anti-rabbit IgG/PE antibody was added into the blocking buffer mentioned above to react with the primary antibody at 1/200 dilution for 30

	min on ice. Acquisition of 20,000 events was performed.
--	---

www.sunlongbiotech.com