



## Rabbit Anti-ELK4 antibody

SL13067R

<b>Product Name:</b>	ELK4
<b>Chinese Name:</b>	血清反应因子辅助蛋白1抗体
<b>Alias:</b>	Elk4; ELK4_HUMAN; ETS domain containing protein Elk4; ETS domain protein; ETS domain-containing protein Elk-4; SAP-1; SAP1; Serum response factor accessory protein 1; SRF accessory protein 1; TCF1.
<b>Organism Species:</b>	Rabbit
<b>Clonality:</b>	Polyclonal
<b>React Species:</b>	Human,Mouse,Rat,Dog,Pig,Cow,Horse,Sheep,
<b>Applications:</b>	WB=1:500-2000ELISA=1:500-1000IHC-P=1:400-800IHC-F=1:400-800ICC=1:100-500IF=1:100-500 (Paraffin sections need antigen repair) not yet tested in other applications. optimal dilutions/concentrations should be determined by the end user.
<b>Molecular weight:</b>	47kDa
<b>Cellular localization:</b>	The nucleus
<b>Form:</b>	Lyophilized or Liquid
<b>Concentration:</b>	1mg/ml
<b>immunogen:</b>	KLH conjugated synthetic peptide derived from human ELK4/SAP-1a:21-120/431
<b>Lsotype:</b>	IgG
<b>Purification:</b>	affinity purified by Protein A
<b>Storage Buffer:</b>	0.01M TBS(pH7.4) with 1% BSA, 0.03% Proclin300 and 50% Glycerol.
<b>Storage:</b>	Store at -20 °C for one year. Avoid repeated freeze/thaw cycles. The lyophilized antibody is stable at room temperature for at least one month and for greater than a year when kept at -20°C. When reconstituted in sterile pH 7.4 0.01M PBS or diluent of antibody the antibody is stable for at least two weeks at 2-4 °C.
<b>PubMed:</b>	<a href="#">PubMed</a>
<b>Product Detail:</b>	Serum response factor (SRF) is a transcription factor that binds the serum response element (SRE), a sequence that mediates the transient response of many cellular genes to growth stimulation. SRF-binding sites are also constitutive promoter elements in many muscle-specific promoters. At the c-Fos SRE, formation of a ternary complex containing SRF and its accessory protein p62TCF appears to be important for signal transduction.

Two related Ets domain proteins, Elk-1 and SRF accessory protein-1 (SAP-1), have DNA binding properties identical to that of p62TCF. Elk-1 and SAP-1 contain two homologous regions of which the two amino terminal regions, the Ets domain (box A) and the B box, mediate ternary complex formation with SRF. The third homologous region, the C box located toward the C-terminus of the proteins, contains conserved consensus phosphorylation sites for MAP kinases.

**Function:**

Forms a ternary complex with the serum response factor (SRF). Requires DNA-bound SRF for ternary complex formation and makes extensive DNA contacts to the 5' side of SRF, but does not bind DNA autonomously.

**Subunit:**

Interacts with SIRT7.

**Subcellular Location:**

Nucleus.

**Similarity:**

Belongs to the ETS family.  
Contains 1 ETS DNA-binding domain.

**SWISS:**

Q6GSJ2

**Gene ID:**

2005

**Database links:**

[Entrez Gene: 2005](#)Human

[Entrez Gene: 13714](#)Mouse

[Omm: 600246](#)Human

[SwissProt: P28324](#)Human

[SwissProt: Q6GSJ2](#)Human

[SwissProt: P41158](#)Mouse

[Unigene: 497520](#)Human

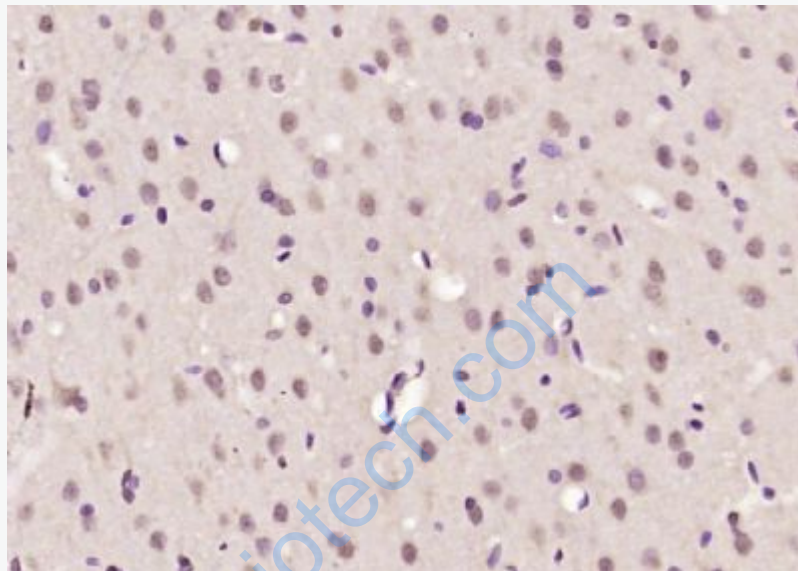
[Unigene: 602654](#)Human

[Unigene: 254233](#)Mouse

[Unigene: 482266](#)Mouse

**Important Note:**

This product as supplied is intended for research use only, not for use in human, therapeutic or diagnostic applications.



**Picture:**

Paraformaldehyde-fixed, paraffin embedded (rat cerebellum); Antigen retrieval by boiling in sodium citrate buffer (pH6.0) for 15min; Block endogenous peroxidase by 3% hydrogen peroxide for 20 minutes; Blocking buffer (normal goat serum) at 37°C for 30min; Antibody incubation with (ELK4) Polyclonal Antibody, Unconjugated (SL13067R) at 1:200 overnight at 4°C, followed by operating according to SP Kit(Rabbit) (sp-0023) instructions and DAB staining.