



## Rabbit Anti-ENPP5 antibody

SL13075R

<b>Product Name:</b>	ENPP5
<b>Chinese Name:</b>	磷酸酶/磷酸二酯酶家族成员5抗体
<b>Alias:</b>	E-NPP 5; E-NPP5; Ectonucleotide pyrophosphatase/phosphodiesterase 5; Ectonucleotide pyrophosphatase/phosphodiesterase family member 5; ENPP5; ENPP5 HUMAN; NPP-5; UNQ550/PRO1107.
<b>Organism Species:</b>	Rabbit
<b>Clonality:</b>	Polyclonal
<b>React Species:</b>	Human,Mouse,Rat,Dog,Horse,
<b>Applications:</b>	WB=1:500-2000ELISA=1:500-1000IHC-P=1:400-800IHC-F=1:400-800ICC=1:100-500IF=1:100-500 (Paraffin sections need antigen repair) not yet tested in other applications. optimal dilutions/concentrations should be determined by the end user.
<b>Molecular weight:</b>	52kDa
<b>Cellular localization:</b>	The cell membraneSecretory protein
<b>Form:</b>	Lyophilized or Liquid
<b>Concentration:</b>	1mg/ml
<b>immunogen:</b>	KLH conjugated synthetic peptide derived from mouse ENPP5:101-200/477
<b>Lsotype:</b>	IgG
<b>Purification:</b>	affinity purified by Protein A
<b>Storage Buffer:</b>	0.01M TBS(pH7.4) with 1% BSA, 0.03% Proclin300 and 50% Glycerol.
<b>Storage:</b>	Store at -20 °C for one year. Avoid repeated freeze/thaw cycles. The lyophilized antibody is stable at room temperature for at least one month and for greater than a year when kept at -20°C. When reconstituted in sterile pH 7.4 0.01M PBS or diluent of antibody the antibody is stable for at least two weeks at 2-4 °C.
<b>PubMed:</b>	<a href="#">PubMed</a>
<b>Product Detail:</b>	May play a role in neuronal cell communication. Lacks nucleotide pyrophosphatase and lysopholipase D activity. <b>Function:</b> May play a role in neuronal cell communication. Lacks nucleotide pyrophosphatase and

lysopholipase D activity (By similarity).

**Subcellular Location:**

Secreted. Membrane.

**Post-translational modifications:**

N-glycosylated.

**Similarity:**

Belongs to the nucleotide pyrophosphatase/phosphodiesterase family.

**SWISS:**

Q9UJA9

**Gene ID:**

59084

**Database links:**

[Entrez Gene: 59084](#)Human

[Entrez Gene: 83965](#)Mouse

[Entrez Gene: 316249](#)Rat

[SwissProt: Q9UJA9](#)Human

[SwissProt: Q9EQG7](#)Mouse

[SwissProt: P84039](#)Rat

[Unigene: 35198](#)Human

[Unigene: 30145](#)Mouse

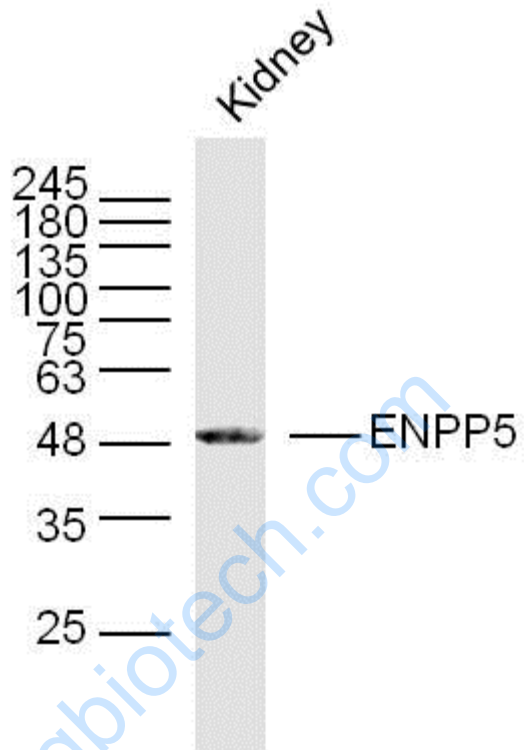
[Unigene: 451536](#)Mouse

[Unigene: 198838](#)Rat

**Important Note:**

This product as supplied is intended for research use only, not for use in human, therapeutic or diagnostic applications.

Picture:



Sample: kidney (Mouse) Lysate at 40 ug

Primary: Anti-ENPP5(SL13075R) at 1/300 dilution

Secondary: IRDye800CW Goat Anti-Rabbit IgG at 1/20000 dilution

Predicted band size: 52 kD

Observed band size: 50 kD