



Rabbit Anti-Syndecan-1 antibody

SL1309R

Product Name:	Syndecan-1
Chinese Name:	多配体蛋白聚糖1抗体
Alias:	SDC1; SDC; SYND1; Syndecan I; SyndecanI; Syndecan-I; syndecan; Sdc1; Syndecan1; AA408134; AA409076; Sstn; syn-1; CD138; CD 138; CD-138; CD138 antigen; Heparan sulfate proteoglycan fibroblast growth factor receptor; SDC 1; Syndecan1 precursor; SDC1 HUMAN.
<p>文献引用</p> <p>PubMed :</p>	<p>Specific References(3) SL1309R has been referenced in 3 publications.</p> <p>[IF=2.65]Miyatani, Kozo, et al. "A high number of IgG4-positive cells in gastric cancer tissue is associated with tumor progression and poor prognosis." Virchows Archiv (2016): 1-9.IHC-F;Human. PubMed:26951261</p> <p>[IF=2.54]Chen, Song, et al. "Heparanase Mediates Intestinal Inflammation and Injury in a Mouse Model of Sepsis." Journal of Histochemistry & Cytochemistry (2017): 0022155417692536.IHC-P;Mouse. PubMed:28170292</p> <p>[IF=2.97]Hambruch, N., et al. "Bovine placentomal heparanase and syndecan expression is related to placental maturation." Placenta.IHC-P;Bovine. PubMed:0</p>
Organism Species:	Rabbit
Clonality:	Polyclonal
React Species:	Human,Mouse,Rat,Chicken,Dog,Pig,Cow,Horse,Rabbit,
Applications:	WB=1:500-2000ELISA=1:500-1000IHC-P=1:400-800IHC-F=1:400-800Flow-Cyt=1µg/TestIF=1:100-500 (Paraffin sections need antigen repair) not yet tested in other applications.

	optimal dilutions/concentrations should be determined by the end user.
Molecular weight:	34kDa
Cellular localization:	The cell membraneSecretory protein
Form:	Lyophilized or Liquid
Concentration:	1mg/ml
immunogen:	KLH conjugated synthetic peptide derived from human CD138:201-310/310<Cytoplasmic>
Lsotype:	IgG
Purification:	affinity purified by Protein A
Storage Buffer:	0.01M TBS(pH7.4) with 1% BSA, 0.03% Proclin300 and 50% Glycerol.
Storage:	Store at -20 °C for one year. Avoid repeated freeze/thaw cycles. The lyophilized antibody is stable at room temperature for at least one month and for greater than a year when kept at -20°C. When reconstituted in sterile pH 7.4 0.01M PBS or diluent of antibody the antibody is stable for at least two weeks at 2-4 °C.
PubMed:	PubMed
Product Detail:	<p>The protein encoded by this gene is a transmembrane (type I) heparan sulfate proteoglycan and is a member of the syndecan proteoglycan family. The syndecans mediate cell binding, cell signaling, and cytoskeletal organization and syndecan receptors are required for internalization of the HIV-1 tat protein. The syndecan-1 protein functions as an integral membrane protein and participates in cell proliferation, cell migration and cell-matrix interactions via its receptor for extracellular matrix proteins. Altered syndecan-1 expression has been detected in several different tumor types. While several transcript variants may exist for this gene, the full-length nature of only two have been described to date. These two represent the major variants of this gene and encode the same protein. [provided by RefSeq, Jul 2008].</p> <p>Function: Cell surface proteoglycan that bears both heparin sulfate and chondroitin sulfate and that links the cytoskeleton to the interstitial matrix.</p> <p>Subunit: Interacts with CDCP1.</p> <p>Subcellular Location: Membrane; Single-pass type I membrane protein. Secreted. Note=Shedding of the ectodomain produces a soluble form.</p> <p>Post-translational modifications: Shedding is enhanced by a number of factors such as heparanase, thrombin or EGF. Also by stress and wound healing. PMA-mediated shedding is inhibited by TIMP3.</p> <p>Similarity: Belongs to the syndecan proteoglycan family.</p> <p>SWISS: P18827</p>

Gene ID:
6382

Database links:

[Entrez Gene: 6382](#)Human

[Entrez Gene: 20969](#)Mouse

[Entrez Gene: 25216](#)Rat

[Omin: 186355](#)Human

[SwissProt: P18827](#)Human

[SwissProt: P18828](#)Mouse

[SwissProt: P26260](#)Rat

[Unigene: 224607](#)Human

[Unigene: 665958](#)Human

[Unigene: 2580](#)Mouse

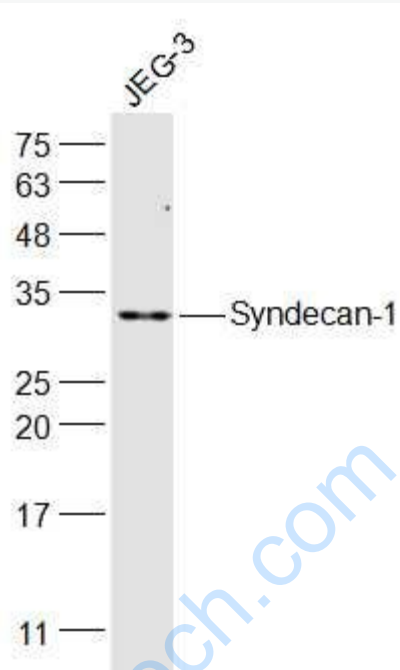
[Unigene: 11176](#)Rat

Important Note:

This product as supplied is intended for research use only, not for use in human, therapeutic or diagnostic applications.

Syndecan1(CD138)属于Syndecans基因家族, 该家族是一类细胞表面Transmembrane protein多糖, 是膜表面粘附受体, 参与细胞-Extracellular matrix之间的粘附。CD138表达于epithelial cells、胚胎间质细胞、血管平滑肌细胞、endothelial cells和神经细胞基底膜。Syndecan-1与恶性Tumour的发生发展、浸润及转移有关, 着色于胞浆和胞膜。

Picture:



Sample:

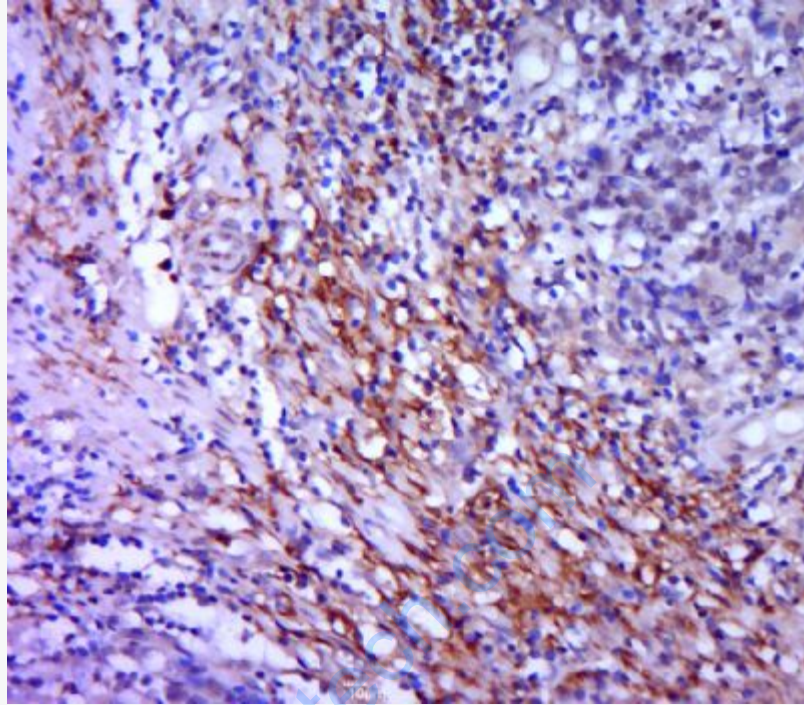
JEG-3(Human) Cell Lysate at 30 ug

Primary: Anti-Syndecan-1 (SL1309R) at 1/500 dilution

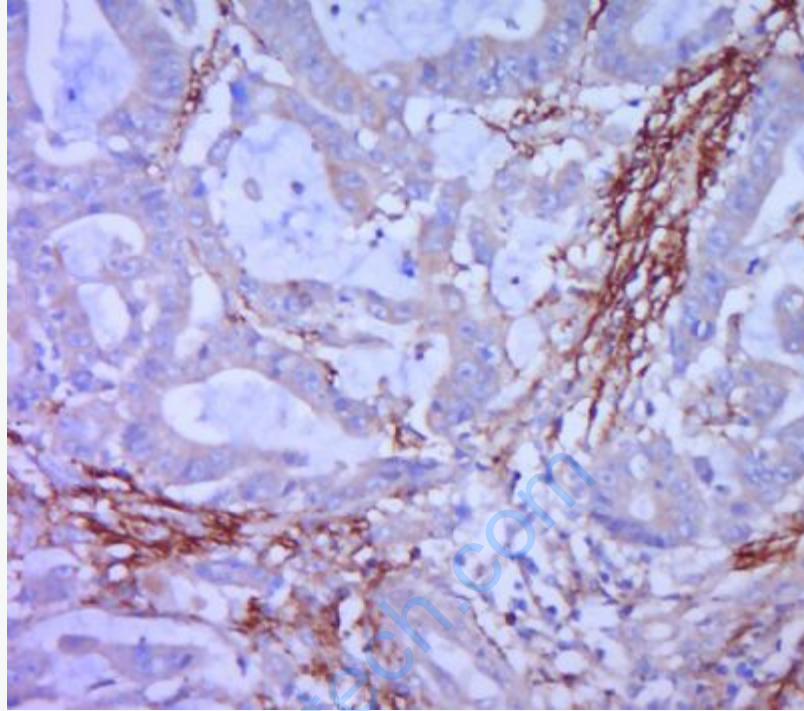
Secondary: IRDye800CW Goat Anti-Rabbit IgG at 1/20000 dilution

Predicted band size: 34 kD

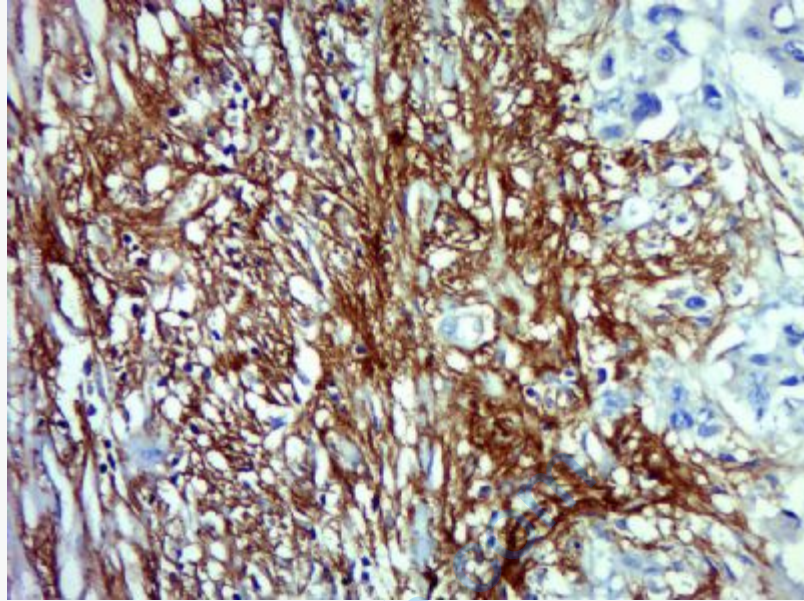
Observed band size: 34 kD



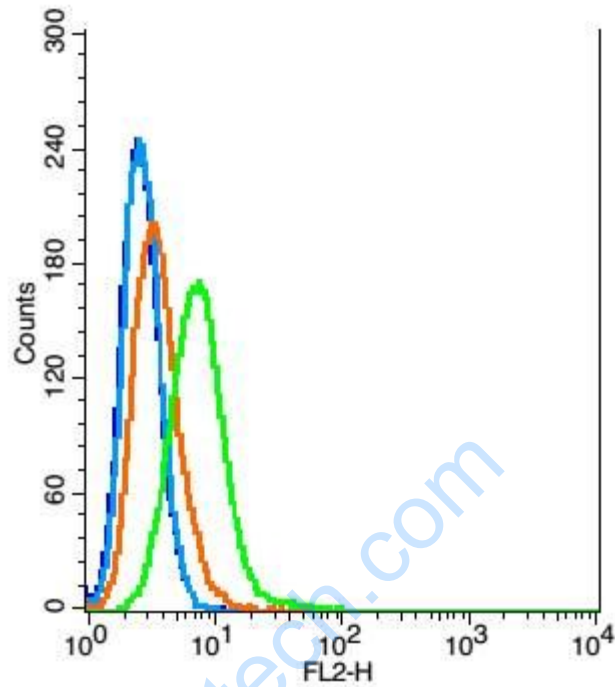
Paraformaldehyde-fixed, paraffin embedded (human colon carcinoma); Antigen retrieval by boiling in sodium citrate buffer (pH6.0) for 15min; Block endogenous peroxidase by 3% hydrogen peroxide for 20 minutes; Blocking buffer (normal goat serum) at 37°C for 30min; Antibody incubation with (Syndecan-1) Polyclonal Antibody, Unconjugated (SL1309R) at 1:400 overnight at 4°C, followed by a conjugated secondary (sp-0023) for 20 minutes and DAB staining.



Paraformaldehyde-fixed, paraffin embedded (human cervical cancer); Antigen retrieval by boiling in sodium citrate buffer (pH6.0) for 15min; Block endogenous peroxidase by 3% hydrogen peroxide for 20 minutes; Blocking buffer (normal goat serum) at 37°C for 30min; Antibody incubation with (Syndecan-1) Polyclonal Antibody, Unconjugated (SL1309R) at 1:400 overnight at 4°C, followed by a conjugated secondary (sp-0023) for 20 minutes and DAB staining.



Paraformaldehyde-fixed, paraffin embedded (Human cervical cancer); Antigen retrieval by boiling in sodium citrate buffer (pH6.0) for 15min; Block endogenous peroxidase by 3% hydrogen peroxide for 20 minutes; Blocking buffer (normal goat serum) at 37°C for 30min; Antibody incubation with (Syndecan-1) Polyclonal Antibody, Unconjugated (SL1309R) at 1:500 overnight at 4°C, followed by a conjugated secondary (sp-0023) for 20 minutes and DAB staining.



Blank control: Hela(blue), the cells were fixed with 2% paraformaldehyde (10 min) and then permeabilized with ice-cold 90% methanol for 30 min on ice.

Isotype Control Antibody: Rabbit IgG(orange) ; Secondary Antibody: Goat anti-rabbit IgG-PE(white blue), Dilution: 1:200 in 1 X PBS containing 0.5% BSA ;

Primary Antibody Dilution: 1 μ g in 100 μ L 1X PBS containing 0.5% BSA(green).