



Rabbit Anti-Epsin 2 antibody

SL13102R

Product Name:	Epsin 2
Chinese Name:	内吞作用辅助蛋白EPN2抗体
Alias:	EHB21; EPN 2; EPN-2; Epn2; EPN2_HUMAN; EPS 15 interacting protein 2; EPS-15-interacting protein 2; Eps15 binding protein; Epsin 2; Epsin-2; Epsin2; KIAA1065; OTTHUMP00000065808; OTTHUMP00000065809; OTTHUMP00000065810; OTTHUMP00000065811; OTTHUMP00000065889.
Organism Species:	Rabbit
Clonality:	Polyclonal
React Species:	Human,Mouse,Rat,Chicken,Dog,Cow,Horse,Rabbit,
Applications:	WB=1:500-2000ELISA=1:500-1000IHC-P=1:400-800IHC-F=1:400-800ICC=1:100-500IF=1:100-500 (Paraffin sections need antigen repair) not yet tested in other applications. optimal dilutions/concentrations should be determined by the end user.
Molecular weight:	69kDa
Cellular localization:	cytoplasmic
Form:	Lyophilized or Liquid
Concentration:	1mg/ml
immunogen:	KLH conjugated synthetic peptide derived from human Epsin 2:31-130/641
Lsotype:	IgG
Purification:	affinity purified by Protein A
Storage Buffer:	0.01M TBS(pH7.4) with 1% BSA, 0.03% Proclin300 and 50% Glycerol.
Storage:	Store at -20 °C for one year. Avoid repeated freeze/thaw cycles. The lyophilized antibody is stable at room temperature for at least one month and for greater than a year when kept at -20°C. When reconstituted in sterile pH 7.4 0.01M PBS or diluent of antibody the antibody is stable for at least two weeks at 2-4 °C.
PubMed:	PubMed
Product Detail:	Elucidation of the mechanism by which receptor tyrosine kinases (RTKs) modulate cellular physiology in response to stimuli is critical to the understanding of growth regulation. Miscues in RTK signaling pathways can result in cellular transformation and ultimately in cancer. Two novel EGF receptor substrates have been described,

designated EGF-receptor pathway substrates 8 and 15, or Eps8 and Eps15. Epsin is a binding partner to Eps15. Both epsin and Eps15 have an ubiquitous tissue distribution but are concentrated in presynaptic nerve terminals specialized for the Clathrin-mediated endocytosis of synaptic vesicles. Disruption of epsin function blocks Clathrin-mediated endocytosis. Epsin, along with its binding partner Eps15, is proposed to be involved in the assistance of Clathrin coat rearrangement during Clathrin coated pit invagination. Epsin 2a, and 2b are splicing variants of epsin 2, which is associated with Clathrin-mediated endocytosis and are enriched in the brain in the peri-Golgi region.

Function:

Plays a role in the formation of clathrin-coated invaginations and endocytosis.

Subunit:

Binds EPS15 (By similarity). Binds AP-2 and clathrin.

Subcellular Location:

Cytoplasm. Cytoplasmic vesicle; clathrin-coated vesicle. In punctate structures throughout the cell, associated with clathrin-coated vesicles, and particularly concentrated in the region of the Golgi complex.

Tissue Specificity:

Highest expression is found in brain. Detected at lower levels in lung and liver.

Post-translational modifications:

Ubiquitinated.

Similarity:

Belongs to the epsin family.

Contains 1 ENTH (epsin N-terminal homology) domain.

Contains 2 UIM (ubiquitin-interacting motif) repeats.

SWISS:

O95208

Gene ID:

22905

Database links:

[Entrez Gene: 22905](#)Human

[Entrez Gene: 13855](#)Mouse

[Entrez Gene: 60443](#)Rat

[Omim: 607263](#)Human

[SwissProt: O95208](#)Human

[SwissProt: Q8CHU3](#)Mouse

[SwissProt: Q9Z1Z3](#)Rat

[Unigene: 309467](#)Human

[Unigene: 139695](#)Mouse

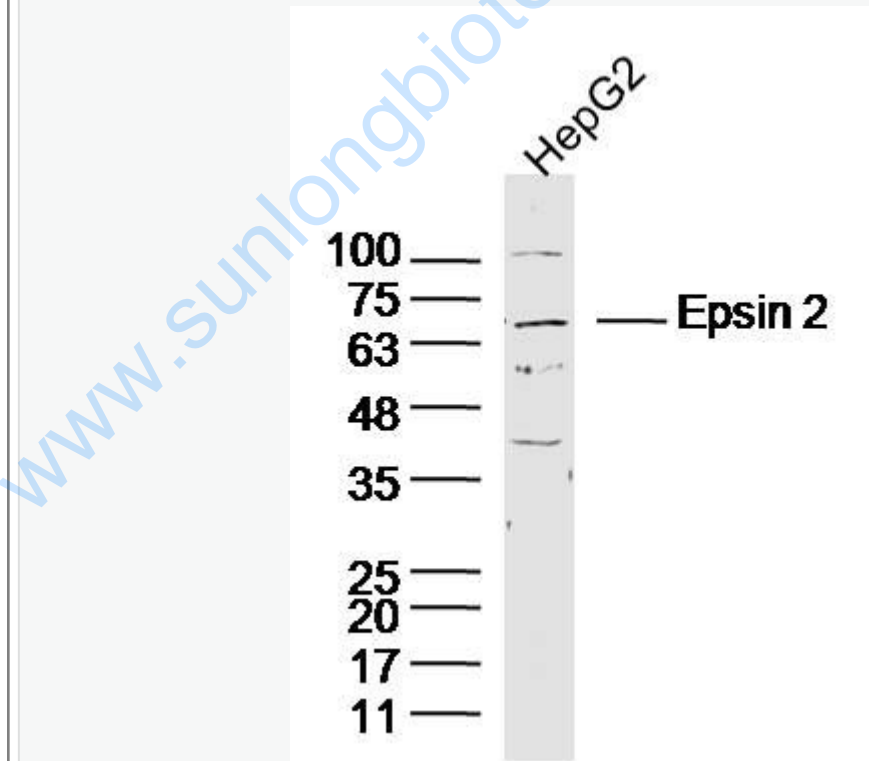
[Unigene: 436466](#)Mouse

[Unigene: 44273](#)Rat

Important Note:

This product as supplied is intended for research use only, not for use in human, therapeutic or diagnostic applications.

Picture:



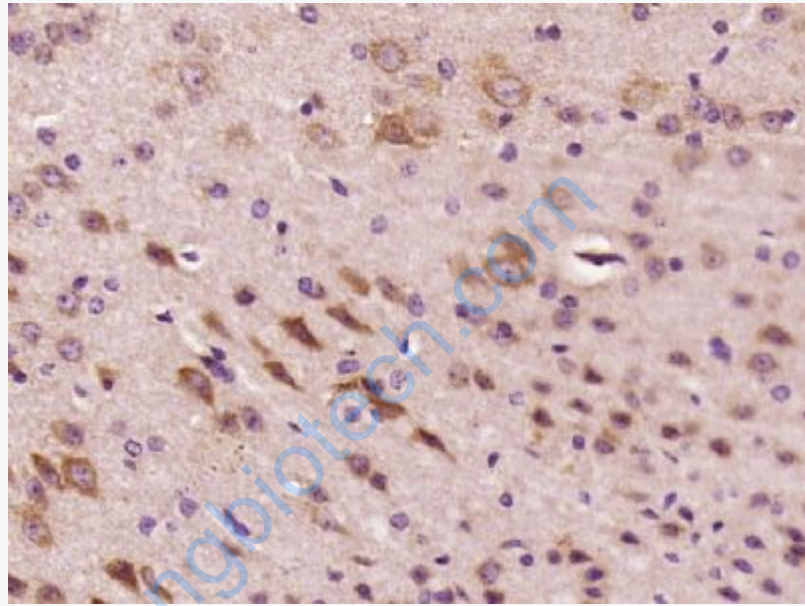
Sample: HepG2(human) Cell Lysate at 40 ug

Primary: Anti-Epsin2(SL13102R) at 1/300 dilution

Secondary: IRDye800CW Goat Anti-Rabbit IgG at 1/20000 dilution

Predicted band size: 69 kD

Observed band size: 69 kD



Paraformaldehyde-fixed, paraffin embedded (mouse brain tissue); Antigen retrieval by boiling in sodium citrate buffer (pH6.0) for 15min; Block endogenous peroxidase by 3% hydrogen peroxide for 20 minutes; Blocking buffer (normal goat serum) at 37°C for 30min; Antibody incubation with (Epsin 2) Polyclonal Antibody, Unconjugated (SL13102R) at 1:400 overnight at 4°C, followed by operating according to SP Kit(Rabbit) (sp-0023) instructions and DAB staining.