



Rabbit Anti-ETV3L antibody

SL13114R

Product Name:	ETV3L
Chinese Name:	ETV3L蛋白抗体
Alias:	EG546801; ETS translocation variant 3 like protein; ets variant 3 like; ets variant gene 3 like; FLJ16478; RGD1562620.
Organism Species:	Rabbit
Clonality:	Polyclonal
React Species:	Human,Mouse,Rat,Chicken,Dog,Pig,Cow,Horse,Rabbit,Sheep,
Applications:	WB=1:500-2000ELISA=1:500-1000IHC-P=1:400-800IHC-F=1:400-800ICC=1:100-500IF=1:100-500 (Paraffin sections need antigen repair) not yet tested in other applications. optimal dilutions/concentrations should be determined by the end user.
Molecular weight:	40kDa
Cellular localization:	The nucleus
Form:	Lyophilized or Liquid
Concentration:	1mg/ml
immunogen:	KLH conjugated synthetic peptide derived from human ETV3L:31-130/361
Lsotype:	IgG
Purification:	affinity purified by Protein A
Storage Buffer:	0.01M TBS(pH7.4) with 1% BSA, 0.03% Proclin300 and 50% Glycerol.
Storage:	Store at -20 °C for one year. Avoid repeated freeze/thaw cycles. The lyophilized antibody is stable at room temperature for at least one month and for greater than a year when kept at -20°C. When reconstituted in sterile pH 7.4 0.01M PBS or diluent of antibody the antibody is stable for at least two weeks at 2-4 °C.
PubMed:	PubMed
Product Detail:	ETV3L is a transcriptional regulator, which belongs to the ETS family and contains 1 ETS DNA-binding domain. Function: Transcriptional regulator

Subcellular Location:

Nuclear.

Similarity:

Belongs to the ETS family.

Contains 1 ETS DNA-binding domain.

SWISS:

Q6ZN32

Gene ID:

440695

Database links:

[Entrez Gene: 440695](#)Human

[SwissProt: Q6ZN32](#)Human

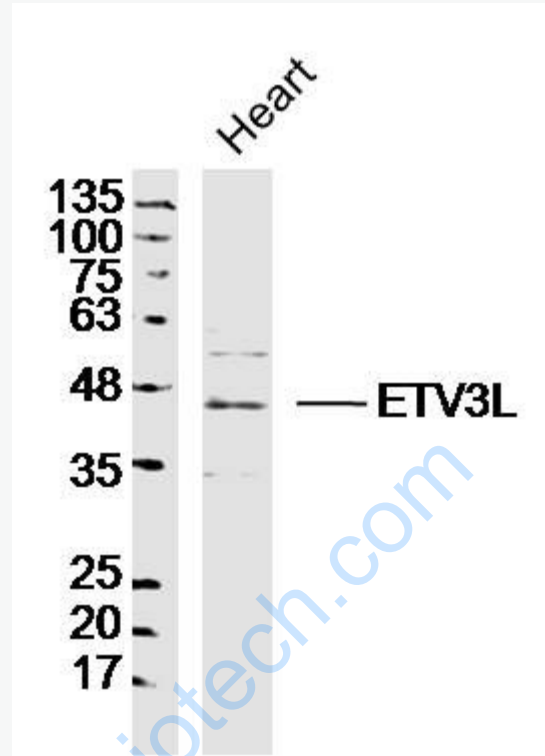
[Unigene: 127138](#)Human

Important Note:

This product as supplied is intended for research use only, not for use in human, therapeutic or diagnostic applications.

www.sunlongbiotech.com

Picture:



Sample: Heart (mouse) Lysate at 40 ug

Primary: Anti-ETV3L (SL13114R) at 1/300 dilution

Secondary: IRDye800CW Goat Anti-RabbitIgG at 1/20000 dilution

Predicted band size: 40 kD

Observed band size: 40 kD