



## Rabbit Anti-FbxL4 antibody

SL13166R

<b>Product Name:</b>	FbxL4
<b>Chinese Name:</b>	F-box富含亮氨酸重复蛋白4抗体
<b>Alias:</b>	F box and leucine rich repeat protein 4; F box protein FBL4/FBL5; F box/LRR repeat protein 4; F-box and leucine-rich repeat protein 4; F-box protein FBL 4; F-box protein FBL4/FBL5; F-box/LRR-repeat protein 4; FBL 4; FBL 5; FBL4; FBL5; Fbx14; FBXL4 HUMAN.
<b>Organism Species:</b>	Rabbit
<b>Clonality:</b>	Polyclonal
<b>React Species:</b>	Human,Mouse,Rat,Chicken,Cow,Sheep,
<b>Applications:</b>	WB=1:500-2000ELISA=1:500-1000IHC-P=1:400-800IHC-F=1:400-800ICC=1:100-500IF=1:100-500 (Paraffin sections need antigen repair) not yet tested in other applications. optimal dilutions/concentrations should be determined by the end user.
<b>Molecular weight:</b>	70kDa
<b>Cellular localization:</b>	The nucleuscytoplasmic
<b>Form:</b>	Lyophilized or Liquid
<b>Concentration:</b>	1mg/ml
<b>immunogen:</b>	KLH conjugated synthetic peptide derived from human FbxL4/FBL4:15-100/621
<b>Lsotype:</b>	IgG
<b>Purification:</b>	affinity purified by Protein A
<b>Storage Buffer:</b>	0.01M TBS(pH7.4) with 1% BSA, 0.03% Proclin300 and 50% Glycerol.
<b>Storage:</b>	Store at -20 °C for one year. Avoid repeated freeze/thaw cycles. The lyophilized antibody is stable at room temperature for at least one month and for greater than a year when kept at -20°C. When reconstituted in sterile pH 7.4 0.01M PBS or diluent of antibody the antibody is stable for at least two weeks at 2-4 °C.
<b>PubMed:</b>	<a href="#">PubMed</a>
<b>Product Detail:</b>	This gene encodes a member of the F-box protein family which is characterized by an approximately 40 amino acid motif, the F-box. The F-box proteins constitute one of the four subunits of ubiquitin protein ligase complex called SCFs (SKP1-cullin-F-box), which function in phosphorylation-dependent ubiquitination. The F-box proteins are

divided into 3 classes: Fbws containing WD-40 domains, Fbls containing leucine-rich repeats, and Fbxs containing either different protein-protein interaction modules or no recognizable motifs. The protein encoded by this gene belongs to the Fbls class and, in addition to an F-box, contains at least 9 tandem leucine-rich repeats. [provided by RefSeq, Jul 2008].

**Subunit:**

Part of a SCF (SKP1-cullin-F-box) protein ligase complex (By similarity).

**Subcellular Location:**

Cytoplasm. Nucleus.

**Tissue Specificity:**

Expressed in heart, kidney, liver, lung, pancreas, and placenta, but not in skeletal muscle.

**Similarity:**

Contains 1 F-box domain.

Contains 9 LRR (leucine-rich) repeats.

**SWISS:**

Q9UKA2

**Gene ID:**

26235

**Database links:**

[Entrez Gene: 26235](#)Human

[Entrez Gene: 269514](#)Mouse

[Entrez Gene: 100156082](#)Pig

[Entrez Gene: 535452](#)Cow

[Omin: 605654](#)Human

[SwissProt: Q0VD31](#)Cow

[SwissProt: Q9UKA2](#)Human

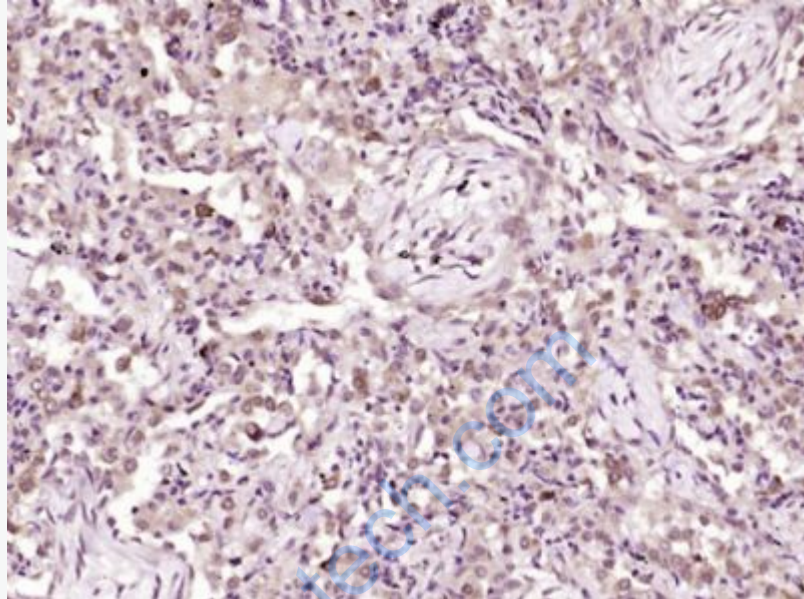
[SwissProt: Q8BH70](#)Mouse

[Unigene: 536850](#)Human

[Unigene: 40708](#)Mouse

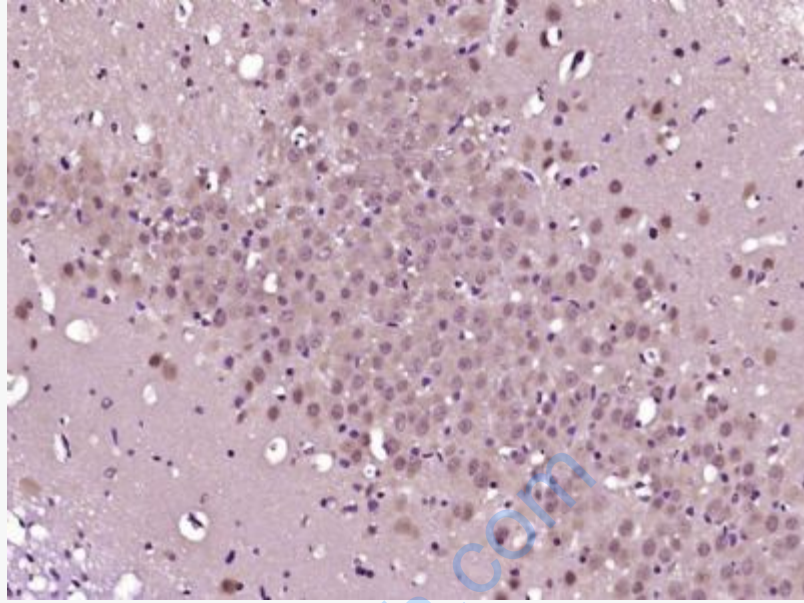
**Important Note:**

This product as supplied is intended for research use only, not for use in human, therapeutic or diagnostic applications.



**Picture:**

Paraformaldehyde-fixed, paraffin embedded (Human lung carcinoma); Antigen retrieval by boiling in sodium citrate buffer (pH6.0) for 15min; Block endogenous peroxidase by 3% hydrogen peroxide for 20 minutes; Blocking buffer (normal goat serum) at 37°C for 30min; Antibody incubation with (FbxL4) Polyclonal Antibody, Unconjugated (SL13166R) at 1:400 overnight at 4°C, followed by operating according to SP Kit(Rabbit) (sp-0023) instructions and DAB staining.



Paraformaldehyde-fixed, paraffin embedded (Rat brain); Antigen retrieval by boiling in sodium citrate buffer (pH6.0) for 15min; Block endogenous peroxidase by 3% hydrogen peroxide for 20 minutes; Blocking buffer (normal goat serum) at 37°C for 30min; Antibody incubation with (FbxL4) Polyclonal Antibody, Unconjugated (SL13166R) at 1:400 overnight at 4°C, followed by operating according to SP Kit(Rabbit) (sp-0023) instructions and DAB staining.