



Rabbit Anti-FOPNL antibody

SL13197R

Product Name:	FOPNL
Chinese Name:	胚胎Stem cells相关蛋白FOPNL抗体
Alias:	C16orf63; FGFR1OP N terminal like; FGFR1OP N-terminal-like protein; FOP-related protein of 20 kDa; Fopnl; FOPNL_HUMAN; FOR20; LisH domain containing protein C16orf63; LisH domain-containing protein FOPNL; PHSECRG2; Pluripotent embryonic stem cell related protein.
Organism Species:	Rabbit
Clonality:	Polyclonal
React Species:	Human,Mouse,Rat,Dog,Pig,Cow,Horse,Sheep,
Applications:	WB=1:500-2000ELISA=1:500-1000IHC-P=1:400-800IHC-F=1:400-800ICC=1:100-500IF=1:100-500 (Paraffin sections need antigen repair) not yet tested in other applications. optimal dilutions/concentrations should be determined by the end user.
Molecular weight:	20kDa
Cellular localization:	cytoplasmic
Form:	Lyophilized or Liquid
Concentration:	1mg/ml
immunogen:	KLH conjugated synthetic peptide derived from human FOPNL/C16orf63:6-80/174
Lsotype:	IgG
Purification:	affinity purified by Protein A
Storage Buffer:	0.01M TBS(pH7.4) with 1% BSA, 0.03% Proclin300 and 50% Glycerol.
Storage:	Store at -20 °C for one year. Avoid repeated freeze/thaw cycles. The lyophilized antibody is stable at room temperature for at least one month and for greater than a year when kept at -20°C. When reconstituted in sterile pH 7.4 0.01M PBS or diluent of antibody the antibody is stable for at least two weeks at 2-4 °C.
PubMed:	PubMed
Product Detail:	C16orf63, also known as FLJ31153 or DKFZp686N1651, is a 174 amino acid protein that contains one LisH domain. The gene that encodes C16orf63 maps to human chromosome 16. Chromosome 16 encodes over 900 genes in approximately 90 million base pairs, makes up nearly 3% of human cellular DNA and is associated with a variety

of genetic disorders. The GAN gene is located on chromosome 16 and, with mutation, may lead to giant axonal neuropathy, a nervous system disorder characterized by increasing malfunction with growth. The rare disorder Rubinstein-Taybi syndrome is also associated with chromosome 16, though through the CREBBP gene which encodes a critical CREB binding protein. Signs of Rubinstein-Taybi include mental retardation and predisposition to tumor growth and white blood cell neoplasias. Crohn's disease is a gastrointestinal inflammatory condition associated with chromosome 16 through the NOD2 gene. An association with systemic lupus erythematosus and a number of other autoimmune disorders with the pericentromeric region of chromosome 16 has led to the identification of SLC5A11 as a potential autoimmune modifier. The C16orf63 gene product has been provisionally designated C16orf63 pending further characterization.

Function:

Involved in the biogenesis of cilia.

Subunit:

Homooligomer; probably required for localization to centrosomes.

Subcellular Location:

Cell projection; cilium. Cytoplasm; cytoskeleton; cilium basal body. Cytoplasm; cytoskeleton; centrosome. Cytoplasmic granule. Localizes to pericentriolar satellites, small (70-100 nm) cytoplasmic granules associated with the centrosome.

Tissue Specificity:

Widely expressed. Detected in brain, heart, kidney, liver, lung, skeletal muscle, placenta and intestine.

Similarity:

Belongs to the FGFR1OP family.
Contains 1 LisH domain.

SWISS:

Q96NB1

Gene ID:

123811

Database links:

[Entrez Gene: 123811](#)Human

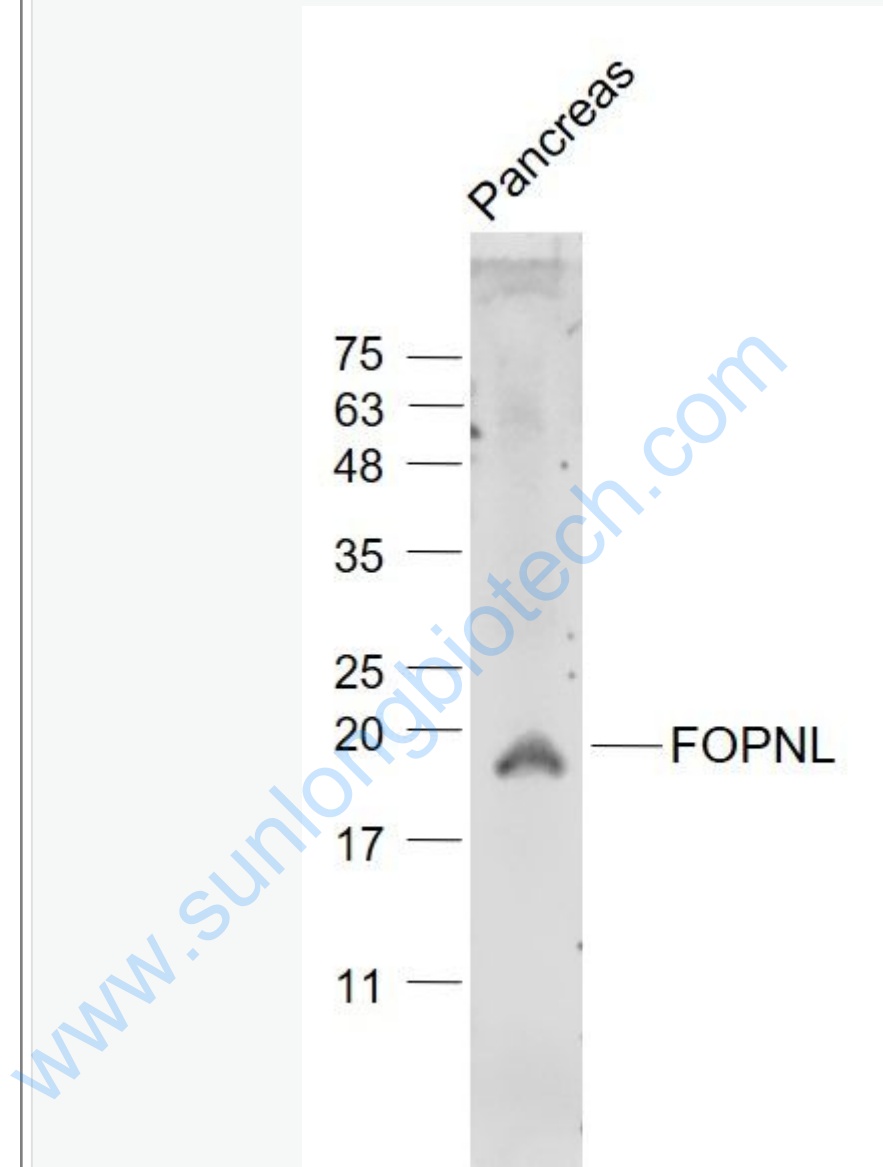
[SwissProt: Q96NB1](#)Human

[Unigene: 514179](#)Human

Important Note:

This product as supplied is intended for research use only, not for use in human, therapeutic or diagnostic applications.

Picture:



Sample:

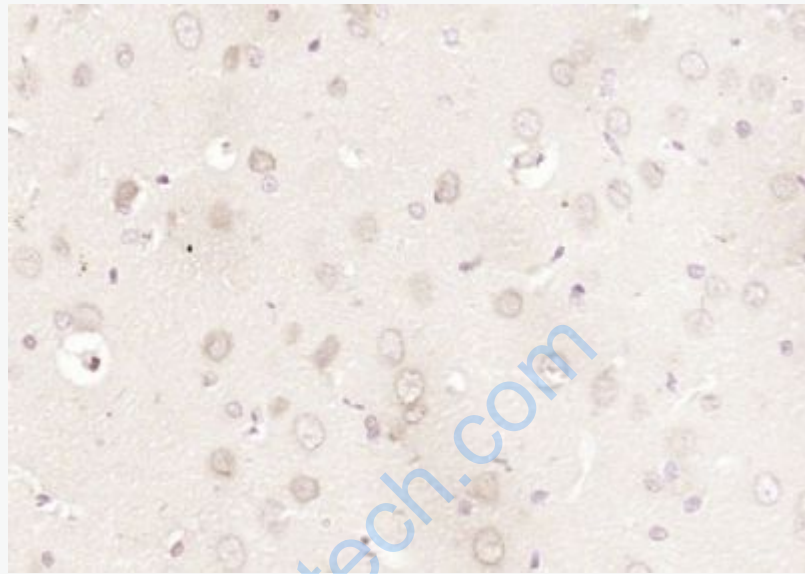
Pancreas (Mouse) Lysate at 40 ug

Primary: Anti- FOPNL (SL13197R) at 1/1000 dilution

Secondary: IRDye800CW Goat Anti-Rabbit IgG at 1/20000 dilution

Predicted band size: 20 kD

Observed band size: 19 kD



Paraformaldehyde-fixed, paraffin embedded (rat brain); Antigen retrieval by boiling in sodium citrate buffer (pH6.0) for 15min; Block endogenous peroxidase by 3% hydrogen peroxide for 20 minutes; Blocking buffer (normal goat serum) at 37°C for 30min; Antibody incubation with (FOPNL) Polyclonal Antibody, Unconjugated (SL13197R) at 1:200 overnight at 4°C, followed by operating according to SP Kit(Rabbit) (sp-0023) instructions and DAB staining.