



Rabbit Anti-FRG1 antibody

SL13215R

Product Name:	FRG1
Chinese Name:	面肩肱型肌营养不良症相关蛋白FRG1抗体
Alias:	frg1; FRG1_HUMAN; FRG1A; FSG1; FSHD region gene 1 protein; Protein FRG1.
Organism Species:	Rabbit
Clonality:	Polyclonal
React Species:	Human,Mouse,Rat,Cow,Horse,Rabbit,
Applications:	WB=1:500-2000ELISA=1:500-1000IHC-P=1:400-800IHC-F=1:400-800ICC=1:100-500IF=1:100-500 (Paraffin sections need antigen repair) not yet tested in other applications. optimal dilutions/concentrations should be determined by the end user.
Molecular weight:	29kDa
Cellular localization:	The nucleus
Form:	Lyophilized or Liquid
Concentration:	1mg/ml
immunogen:	KLH conjugated synthetic peptide derived from human FRG1:181-258/258
Lsotype:	IgG
Purification:	affinity purified by Protein A
Storage Buffer:	0.01M TBS(pH7.4) with 1% BSA, 0.03% Proclin300 and 50% Glycerol.
Storage:	Store at -20 °C for one year. Avoid repeated freeze/thaw cycles. The lyophilized antibody is stable at room temperature for at least one month and for greater than a year when kept at -20°C. When reconstituted in sterile pH 7.4 0.01M PBS or diluent of antibody the antibody is stable for at least two weeks at 2-4 °C.
PubMed:	PubMed
Product Detail:	This gene maps to a location 100 kb centromeric of the repeat units on chromosome 4q35 which are deleted in facioscapulohumeral muscular dystrophy (FSHD). It is evolutionarily conserved and has related sequences on multiple human chromosomes but DNA sequence analysis did not reveal any homology to known genes. In vivo studies demonstrate the encoded protein is localized to the nucleolus. [provided by RefSeq, Jul 2008].

Function:

May have a role in processing of pre-rRNA or in the assembly of rRNA into ribosomal subunits. May be involved in pre-mRNA splicing.

Subunit:

Identified in the spliceosome C complex.

Subcellular Location:

Nucleus; Cajal body. Nucleus speckle. Nucleus; nucleolus. First expressed in Cajal bodies and nuclear speckles. As speckle expression diminishes, expression is seen in dense structures (dense fibrillar component and the granular component) of the nucleolus.

Tissue Specificity:

Expressed in adult muscle, lymphocytes, fetal brain, muscle, and placenta.

Similarity:

Belongs to the FRG1 family.

SWISS:

Q14331

Gene ID:

2483

Database links:

[Entrez Gene: 2483](#)Human

[Entrez Gene: 14300](#)Mouse

[Omim: 601278](#)Human

[SwissProt: Q14331](#)Human

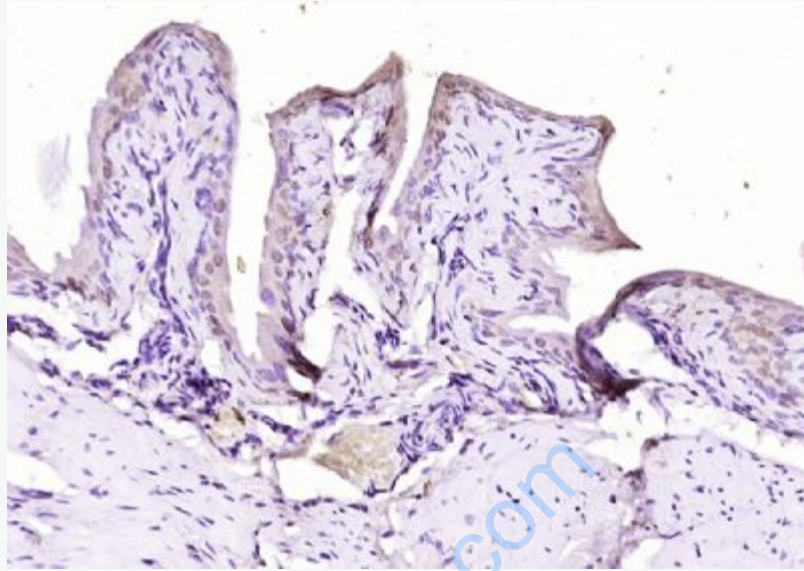
[SwissProt: P97376](#)Mouse

[Unigene: 203772](#)Human

[Unigene: 217312](#)Mouse

Important Note:

This product as supplied is intended for research use only, not for use in human, therapeutic or diagnostic applications.



Picture:

Paraformaldehyde-fixed, paraffin embedded (mouse bladder); Antigen retrieval by boiling in sodium citrate buffer (pH6.0) for 15min; Block endogenous peroxidase by 3% hydrogen peroxide for 20 minutes; Blocking buffer (normal goat serum) at 37°C for 30min; Antibody incubation with (FRG1) Polyclonal Antibody, Unconjugated (SL13215R) at 1:200 overnight at 4°C, followed by operating according to SP Kit(Rabbit) (sp-0023) instructions and DAB staining.