



Rabbit Anti-FSD1L antibody

SL13221R

Product Name:	FSD1L
Chinese Name:	卷曲螺旋结构域蛋白10抗体
Alias:	CCDC10; Coiled-coil domain-containing protein 10; CSDUFD1; FSD1 N-terminal-like protein; FSD1-like protein; FSD1CL; Fsd1l; FSD1L_HUMAN; FSD1NL.
Organism Species:	Rabbit
Clonality:	Polyclonal
React Species:	Human,Mouse,Rat,Dog,Pig,Cow,Horse,Rabbit,Sheep,
Applications:	WB=1:500-2000ELISA=1:500-1000IHC-P=1:400-800IHC-F=1:400-800ICC=1:100-500IF=1:100-500 (Paraffin sections need antigen repair) not yet tested in other applications. optimal dilutions/concentrations should be determined by the end user.
Molecular weight:	60kDa
Cellular localization:	The nucleus
Form:	Lyophilized or Liquid
Concentration:	1mg/ml
immunogen:	KLH conjugated synthetic peptide derived from human FSD1L/CCDC10:221-320/530
Lsotype:	IgG
Purification:	affinity purified by Protein A
Storage Buffer:	0.01M TBS(pH7.4) with 1% BSA, 0.03% Proclin300 and 50% Glycerol.
Storage:	Store at -20 °C for one year. Avoid repeated freeze/thaw cycles. The lyophilized antibody is stable at room temperature for at least one month and for greater than a year when kept at -20°C. When reconstituted in sterile pH 7.4 0.01M PBS or diluent of antibody the antibody is stable for at least two weeks at 2-4 °C.
PubMed:	PubMed
Product Detail:	FSD1L is a 530 amino acid protein containing one B30.2/SPRY domain, one COS domain, and a fibronectin type-III domain. Existing as three alternatively spliced isoforms, FSD1L is expressed primarily in brain, with lower levels of expression found in thymus, pituitary and testis. FSD1L may function in microtubule binding during interphase and is encoded by a gene that maps to human chromosome 9q31.2. Chromosome 9 consists of about 145 million bases andd comprises approximately 4% of

the human genome and encodes nearly 900 genes. Considered to play a role in gender determination, deletion of the distal portion of 9p can lead to development of male to female sex reversal, the phenotype of a female with a male X,Y genotype.

Similarity:

Contains 1 B30.2/SPRY domain.

Contains 1 COS domain.

Contains 1 fibronectin type-III domain.

SWISS:

Q9BWC9

Gene ID:

29903

Database links:

[Entrez Gene: 29903](#)Human

[Entrez Gene: 232821](#)Mouse

[Entrez Gene: 499071](#)Rat

[Omim: 613478](#)Human

[SwissProt: Q9BWC9](#)Human

[SwissProt: Q3ULM0](#)Mouse

[Unigene: 82482](#)Human

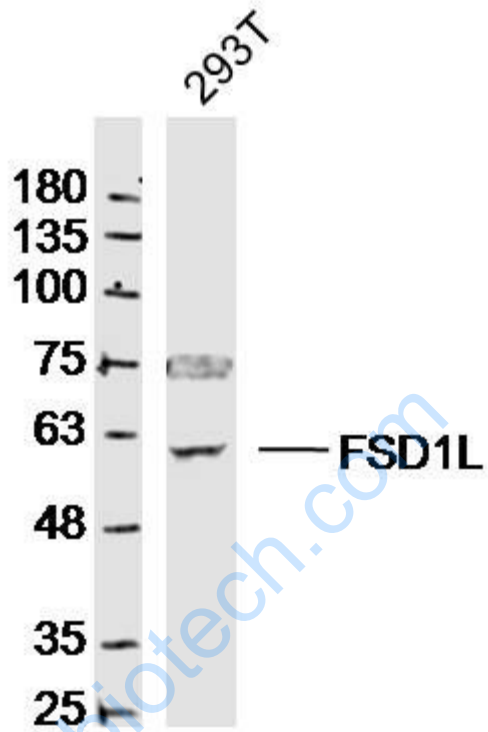
[Unigene: 482157](#)Mouse

[Unigene: 488775](#)Mouse

Important Note:

This product as supplied is intended for research use only, not for use in human, therapeutic or diagnostic applications.

Picture:



Sample:

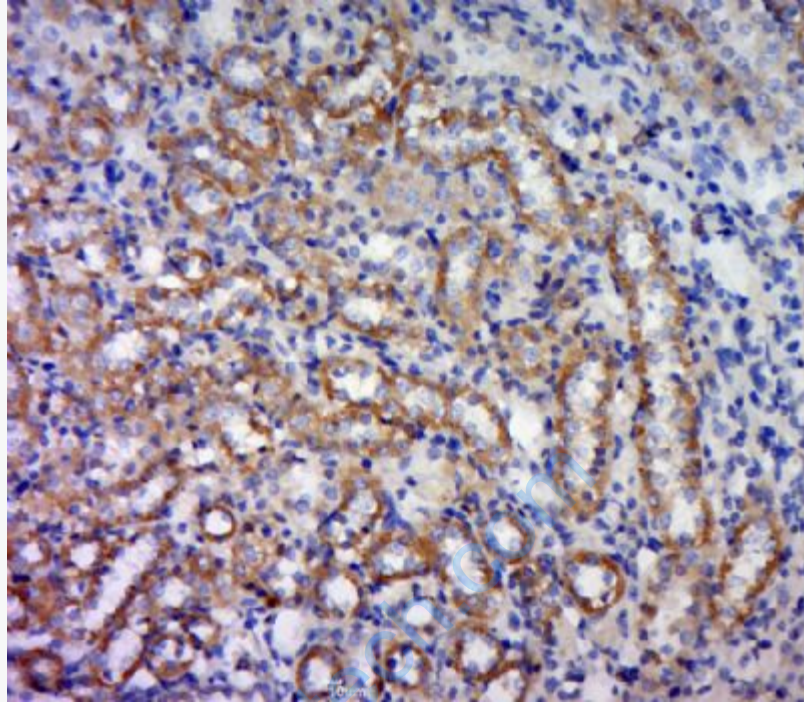
293T Cell (Human) Lysate at 30 ug

Primary: Anti- FSD1L (SL13221R) at 1/300 dilution

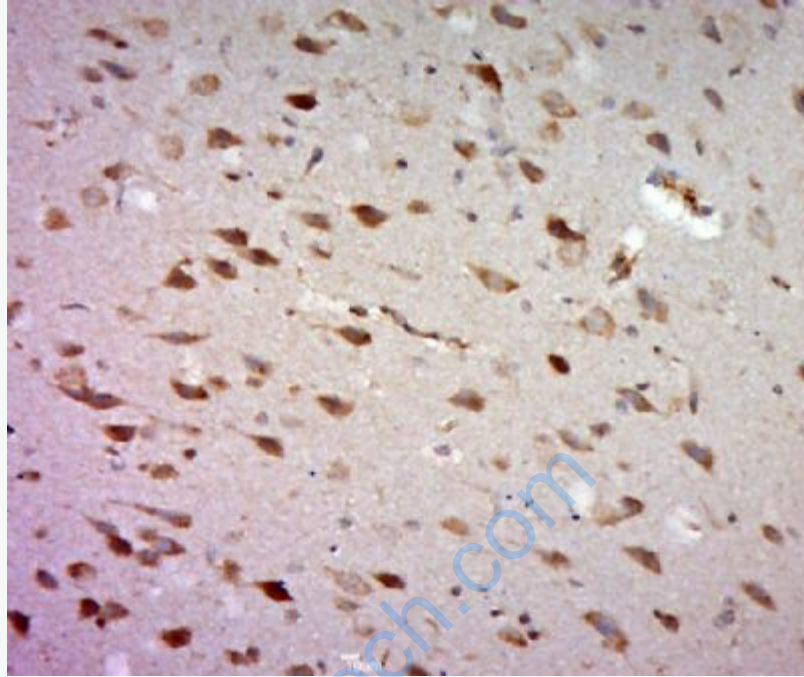
Secondary: IRDye800CW Goat Anti-Rabbit IgG at 1/20000 dilution

Predicted band size: 60kD

Observed band size: 60kD



Paraformaldehyde-fixed, paraffin embedded (Rat kidney); Antigen retrieval by boiling in sodium citrate buffer (pH6.0) for 15min; Block endogenous peroxidase by 3% hydrogen peroxide for 20 minutes; Blocking buffer (normal goat serum) at 37°C for 30min; Antibody incubation with (FSD1L) Polyclonal Antibody, Unconjugated (SL13221R) at 1:500 overnight at 4°C, followed by a conjugated secondary (sp-0023) for 20 minutes and DAB staining.



Paraformaldehyde-fixed, paraffin embedded (Rat brain); Antigen retrieval by boiling in sodium citrate buffer (pH6.0) for 15min; Block endogenous peroxidase by 3% hydrogen peroxide for 20 minutes; Blocking buffer (normal goat serum) at 37°C for 30min; Antibody incubation with (FSD1L) Polyclonal Antibody, Unconjugated (SL13221R) at 1:500 overnight at 4°C, followed by a conjugated secondary (sp-0023) for 20 minutes and DAB staining.