



Rabbit Anti-Metallothionein antibody

SL1328R

Product Name:	Metallothionein
Chinese Name:	金属硫蛋白抗体
Alias:	CES 1; CES1; Metallothionein 1A; Metallothionein 1S; Metallothionein 2; Metallothionein 2A; Metallothionein IA; Metallothionein II; Metallothionein2; MGC32848; MT 1A; MT 2; MT2_HUMAN; MT 2A; MT IA; MT II; MT1; MT1A; MT1S; MT2; MT2A; MTC.
Organism Species:	Rabbit
Clonality:	Polyclonal
React Species:	Human,Mouse,Rat,
Applications:	ELISA=1:500-1000IHC-P=1:400-800IHC-F=1:400-800IF=1:100-500 (Paraffin sections need antigen repair) not yet tested in other applications. optimal dilutions/concentrations should be determined by the end user.
Molecular weight:	6kDa
Cellular localization:	The nucleuscytoplasmic
Form:	Lyophilized or Liquid
Concentration:	1mg/ml
immunogen:	KLH conjugated synthetic peptide derived from mouse metallothionein:11-61/61
Lsotype:	IgG
Purification:	affinity purified by Protein A
Storage Buffer:	0.01M TBS(pH7.4) with 1% BSA, 0.03% Proclin300 and 50% Glycerol.
Storage:	Store at -20 °C for one year. Avoid repeated freeze/thaw cycles. The lyophilized antibody is stable at room temperature for at least one month and for greater than a year when kept at -20°C. When reconstituted in sterile pH 7.4 0.01M PBS or diluent of antibody the antibody is stable for at least two weeks at 2-4 °C.
PubMed:	PubMed
Product Detail:	Metallothioneins (MTs) are a family of low molecular weight, heavy metal-binding proteins characterized by a high cysteine content and lack of aromatic amino acids. MTs bind 7 to 12 heavy metal atoms per molecule of protein. They are ubiquitous in the animal and plant kingdoms and are also found in prokaryotes. In mammals, the cysteine

residues are absolutely conserved and serve to coordinate heavy metal atoms such as zinc, cadmium, and copper via mercaptide linkages.

Function:

Metallothioneins have a high content of cysteine residues that bind various heavy metals; these proteins are transcriptionally regulated by both heavy metals and glucocorticoids.

Similarity:

Belongs to the metallothionein superfamily. Type 1 family.

SWISS:

Q63871

Gene ID:

17749

Database links:

[Entrez Gene: 4489](#)Human

[Entrez Gene: 4502](#)Human

[Entrez Gene: 17749](#)Mouse

[Entrez Gene: 24567](#)Rat

[Omim: 156350](#)Human

[Omim: 156360](#)Human

[SwissProt: Q9XST5](#)Dog

[SwissProt: P02800](#)Horse

[SwissProt: P02795](#)Human

[SwissProt: P04731](#)Human

[SwissProt: Q63871](#)Mouse

[SwissProt: P11957](#)Rabbit

[SwissProt: P18055](#)Rabbit

[SwissProt: P02803](#)Rat

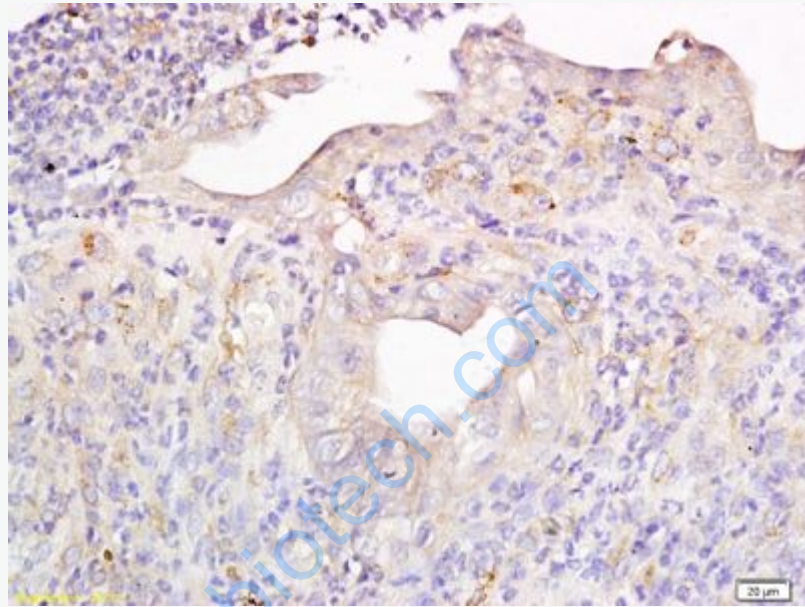
[Unigene: 647371](#)Human

[Unigene: 16133](#)Rat

[Unigene: 54397](#)Rat

Important Note:

This product as supplied is intended for research use only, not for use in human, therapeutic or diagnostic applications.



Picture:

Tissue/cell: mouse colon carcinoma; 4% Paraformaldehyde-fixed and paraffin-embedded;

Antigen retrieval: citrate buffer (0.01M, pH 6.0), Boiling bathing for 15min; Block endogenous peroxidase by 3% Hydrogen peroxide for 30min; Blocking buffer (normal goat serum,C-0005) at 37°C for 20 min;

Incubation: Anti-Metallothionein Polyclonal Antibody, Unconjugated(SL1328R) 1:200, overnight at 4°C, followed by conjugation to the secondary antibody(SP-0023) and DAB(C-0010) staining