



Rabbit Anti-GIPR antibody

SL13292R

Product Name:	GIPR
Chinese Name:	胃泌素抑制肽受体抗体
Alias:	Gastric inhibitory polypeptide receptor; GIP R; GIP-R; Gippr; Gipr; GIPR_HUMAN; Glucose dependent insulintropic polypeptide receptor; Glucose-dependent insulintropic polypeptide receptor; Gm1081; Gm160; INSULINOTROPIC POLYPEPTIDE RECEPTOR, GLUCOSE DEPENDENT; MGC126722; RATGIPPR.
Organism Species:	Rabbit
Clonality:	Polyclonal
React Species:	Human,Mouse,Rat,Cow,Rabbit,Sheep,
Applications:	WB=1:500-2000ELISA=1:500-1000 not yet tested in other applications. optimal dilutions/concentrations should be determined by the end user.
Molecular weight:	51kDa
Cellular localization:	The cell membrane
Form:	Lyophilized or Liquid
Concentration:	1mg/ml
immunogen:	KLH conjugated synthetic peptide derived from human GIPR:21-120/466<Extracellular>
Lsotype:	IgG
Purification:	affinity purified by Protein A
Storage Buffer:	0.01M TBS(pH7.4) with 1% BSA, 0.03% Proclin300 and 50% Glycerol.
Storage:	Store at -20 °C for one year. Avoid repeated freeze/thaw cycles. The lyophilized antibody is stable at room temperature for at least one month and for greater than a year when kept at -20°C. When reconstituted in sterile pH 7.4 0.01M PBS or diluent of antibody the antibody is stable for at least two weeks at 2-4 °C.
PubMed:	PubMed
Product Detail:	Gastric inhibitory polypeptide receptor; GIP R; GIP-R; Gippr; Gipr; GIPR_HUMAN; Glucose dependent insulintropic polypeptide receptor; Glucose-dependent insulintropic polypeptide receptor; Gm1081; Gm160; INSULINOTROPIC POLYPEPTIDE RECEPTOR, GLUCOSE DEPENDENT; MGC126722; RATGIPPR.

Function:

This is a receptor for GIP. The activity of this receptor is mediated by G proteins which activate adenylyl cyclase.

Subunit:

May form homodimers and heterodimers with GLP1R.

Subcellular Location:

Cell membrane.

Similarity:

Belongs to the G-protein coupled receptor 2 family.

SWISS:

P48546

Gene ID:

2696

Database links:

[Entrez Gene: 2696](#)Human

[Entrez Gene: 25024](#)Rat

[Omim: 137241](#)Human

[SwissProt: P48546](#)Human

[SwissProt: P43219](#)Rat

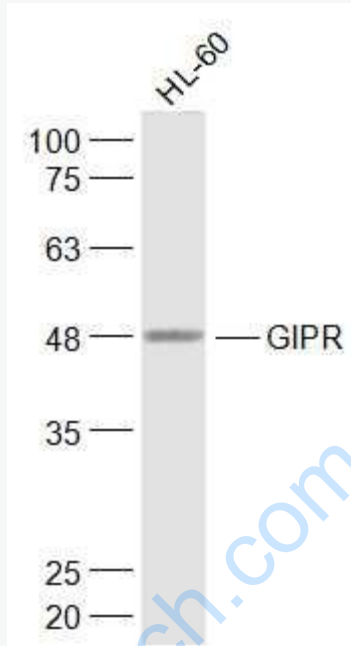
[Unigene: 658534](#)Human

[Unigene: 9676](#)Rat

Important Note:

This product as supplied is intended for research use only, not for use in human, therapeutic or diagnostic applications.

Picture:



Sample:

HL-60(Human) Cell Lysate at 30 ug

Primary: Anti-GIPR (SL13292R) at 1/1000 dilution

Secondary: IRDye800CW Goat Anti-Rabbit IgG at 1/20000 dilution

Predicted band size: 51 kD

Observed band size: 48 kD