



## Rabbit Anti-GCHFR antibody

SL13313R

<b>Product Name:</b>	GCHFR
<b>Chinese Name:</b>	GTP环反馈调节蛋白抗体
<b>Alias:</b>	GCHFR; GFRP; GFRP_HUMAN; GTP cyclohydrolase 1 feedback regulatory protein; GTP cyclohydrolase I feedback regulator; GTP cyclohydrolase I feedback regulatory protein; HsT16933; MGC138467; MGC138469; p35.
<b>Organism Species:</b>	Rabbit
<b>Clonality:</b>	Polyclonal
<b>React Species:</b>	Human,Mouse,Rat,Chicken,Pig,Cow,
<b>Applications:</b>	ELISA=1:500-1000IHC-P=1:400-800IHC-F=1:400-800ICC=1:100-500IF=1:100-500 (Paraffin sections need antigen repair) not yet tested in other applications. optimal dilutions/concentrations should be determined by the end user.
<b>Molecular weight:</b>	10kDa
<b>Cellular localization:</b>	The nucleuscytoplasmicThe cell membrane
<b>Form:</b>	Lyophilized or Liquid
<b>Concentration:</b>	1mg/ml
<b>immunogen:</b>	KLH conjugated synthetic peptide derived from human GCHFR:21-60/84
<b>Lsotype:</b>	IgG
<b>Purification:</b>	affinity purified by Protein A
<b>Storage Buffer:</b>	0.01M TBS(pH7.4) with 1% BSA, 0.03% Proclin300 and 50% Glycerol.
<b>Storage:</b>	Store at -20 °C for one year. Avoid repeated freeze/thaw cycles. The lyophilized antibody is stable at room temperature for at least one month and for greater than a year when kept at -20°C. When reconstituted in sterile pH 7.4 0.01M PBS or diluent of antibody the antibody is stable for at least two weeks at 2-4 °C.
<b>PubMed:</b>	<a href="#">PubMed</a>
<b>Product Detail:</b>	GTP cyclohydrolase I feedback regulatory protein (GFRP) is encoded by the gene GCHFR. GFRP mediates feedback inhibition of GTP cyclohydrolase I activity by tetrahydrobiopterin. GFRP also acts as a mediator for the stimulatory effect of phenylalanine on enzyme activity. L-phenylalanine reverses this inhibition. The molecular weight of GFRP is approximately 9.5kDa although cross-linking experiments

have shown that GFRP is usually found as a homodimer or as a pentamer. 15q15.

**Function:**

Mediates tetrahydrobiopterin inhibition of GTP cyclohydrolase 1. This inhibition is reversed by L-phenylalanine.

**Subunit:**

Homopentamer. Forms a complex with GCH1 where a GCH1 homodecamer is sandwiched by two GFRP homopentamers (By similarity). Interacts with GCH1.

**Subcellular Location:**

Nucleus. Nucleus membrane. Cytoplasm; cytosol.

**Tissue Specificity:**

In epidermis, expressed predominantly in basal undifferentiated keratinocytes and in some but not all melanocytes (at protein level).

**Similarity:**

Belongs to the GFRP family.

**SWISS:**

P30047

**Gene ID:**

2644

**Database links:**

[Entrez Gene: 2644](#)Human

[Entrez Gene: 320415](#)Mouse

[Entrez Gene: 171128](#)Rat

[Omim: 602437](#)Human

[SwissProt: Q32L41](#)Cow

[SwissProt: P30047](#)Human

[SwissProt: P99025](#)Mouse

[SwissProt: P70552](#)Rat

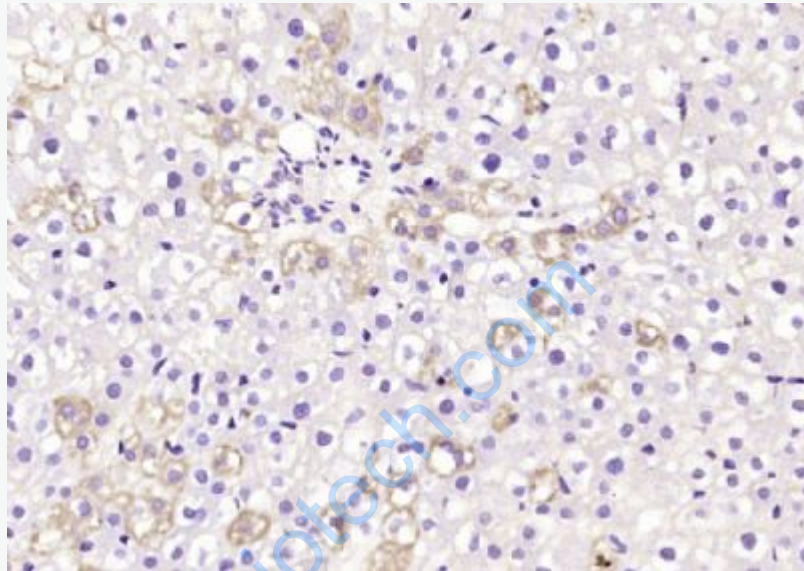
[Unigene: 631717](#)Human

[Unigene: 86373](#)Mouse

[Unigene: 11137](#)Rat

**Important Note:**

This product as supplied is intended for research use only, not for use in human, therapeutic or diagnostic applications.



**Picture:**

Paraformaldehyde-fixed, paraffin embedded (rat liver); Antigen retrieval by boiling in sodium citrate buffer (pH6.0) for 15min; Block endogenous peroxidase by 3% hydrogen peroxide for 20 minutes; Blocking buffer (normal goat serum) at 37°C for 30min; Antibody incubation with (GCHFR) Polyclonal Antibody, Unconjugated (SL13313R) at 1:200 overnight at 4°C, followed by operating according to SP Kit(Rabbit) (sp-0023) instructions and DAB staining.