



Rabbit Anti-Gemin 4 antibody

SL13328R

Product Name:	Gemin 4
Chinese Name:	脊髓性肌萎缩症蛋白Gemin4抗体
Alias:	Gemin4; Gemin-4; Component of gems 4; Gem associated protein 4; HC56; HHRF 1; GEMI4_HUMAN.
Organism Species:	Rabbit
Clonality:	Polyclonal
React Species:	Human,Mouse,Rat,Dog,Rabbit,
Applications:	WB=1:500-2000ELISA=1:500-1000IHC-P=1:400-800IHC-F=1:400-800ICC=1:100-500IF=1:100-500 (Paraffin sections need antigen repair) not yet tested in other applications. optimal dilutions/concentrations should be determined by the end user.
Molecular weight:	120kDa
Cellular localization:	cytoplasmic
Form:	Lyophilized or Liquid
Concentration:	1mg/ml
immunogen:	KLH conjugated synthetic peptide derived from human Gemin 4:251-350/1058
Lsotype:	IgG
Purification:	affinity purified by Protein A
Storage Buffer:	0.01M TBS(pH7.4) with 1% BSA, 0.03% Proclin300 and 50% Glycerol.
Storage:	Store at -20 °C for one year. Avoid repeated freeze/thaw cycles. The lyophilized antibody is stable at room temperature for at least one month and for greater than a year when kept at -20°C. When reconstituted in sterile pH 7.4 0.01M PBS or diluent of antibody the antibody is stable for at least two weeks at 2-4 °C.
PubMed:	PubMed
Product Detail:	Gemin4 is a component of the SMN core complex which, while in the cytoplasm, plays an essential role in ribonucleoprotein (snRNP) assembly, including the biogenesis, delivery and recycling of snRNPs to the spliceosome. In the nucleus, where SMN is required for pre-mRNA splicing, Gemin4 concentrates next to coiled bodies in subnuclear structures called gems, that are highly enriched in splicosomal snRNPs, and in the nucleolus. Deletion or loss-of-function mutations in the SMN lead to the

neurodegenerative disease spinal muscular atrophy (SMA). The human Gemin4 maps to chromosome 17p13.

Function:

GEMIN 4 is part of the SMN complex and plays an essential role in spliceosomal snRNP assembly in the cytoplasm. It is required for pre mRNA splicing in the nucleus.

Subunit:

Part of the core SMN complex that contains SMN1, GEMIN2/SIP1, DDX20/GEMIN3, GEMIN4, GEMIN5, GEMIN6, GEMIN7, GEMIN8 and STRAP/UNRIP. Interacts directly with GEMIN3 and with several snRNP SM core proteins, including SNRPB, SNRPD1, SNRPD2, SNRPD3 and SNRPE. Interacts with PPP4R2.

Subcellular Location:

Cytoplasm. Nucleus. Nucleus, nucleolus. Nucleus, gem. Note=Localized in subnuclear structures next to coiled bodies, called gems, which are highly enriched in spliceosomal snRNPs and in the nucleolus.

SWISS:

P57678

Gene ID:

50628

Database links:

[Entrez Gene: 50628](#)Human

[Omir: 606969](#)Human

[SwissProt: P57678](#)Human

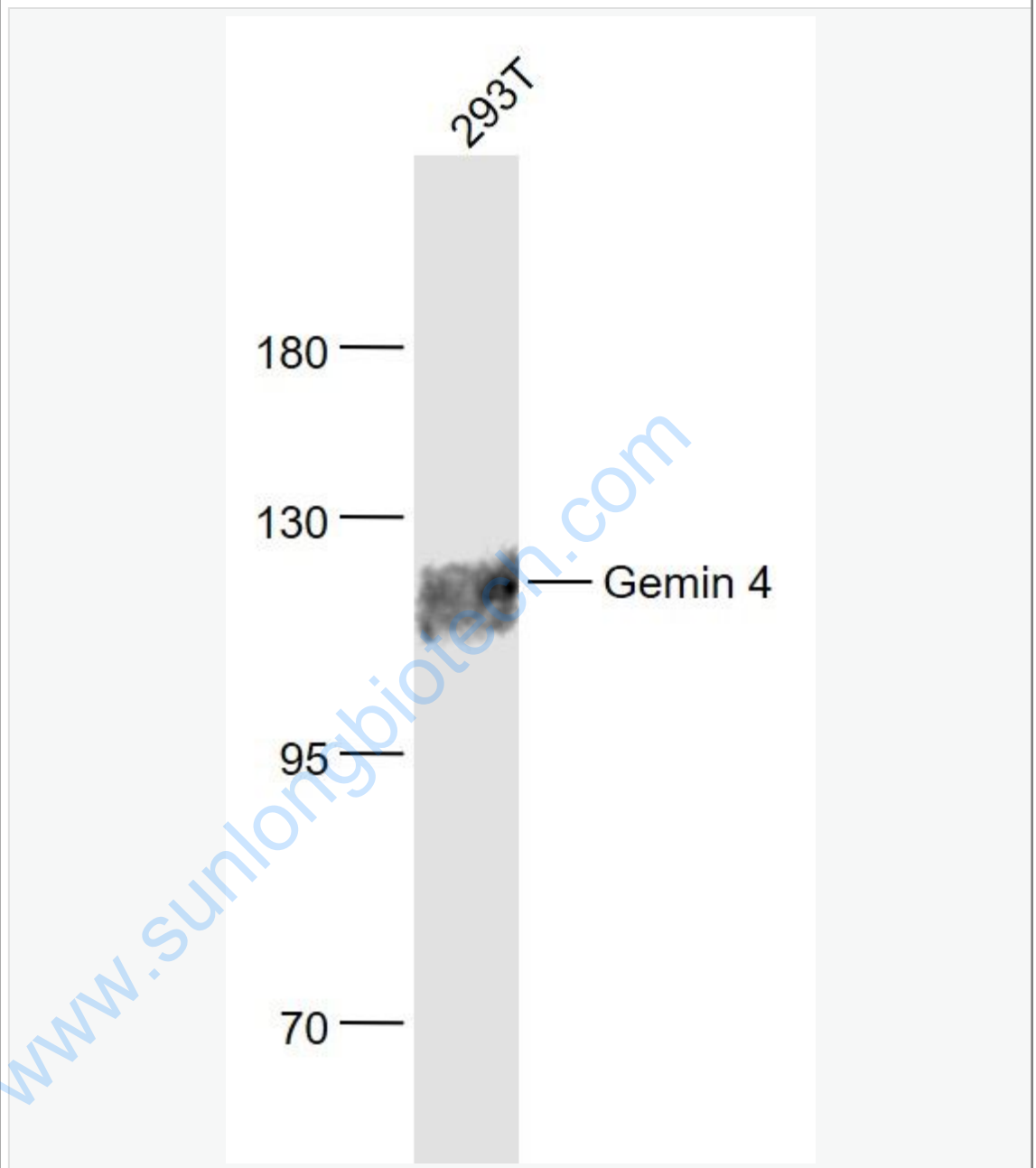
[SwissProt: Q8WUM5](#)Human

[Unigene: 499620](#)Human

Important Note:

This product as supplied is intended for research use only, not for use in human, therapeutic or diagnostic applications.

Picture:



Sample:

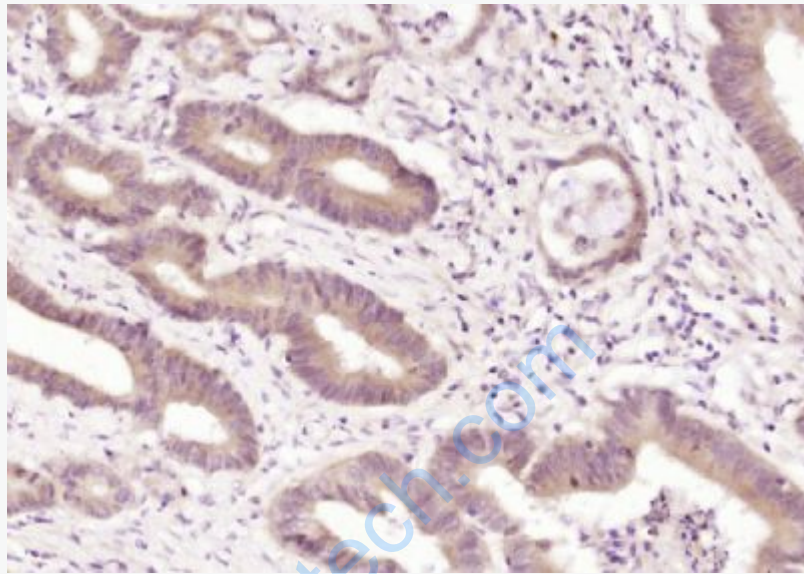
293T(Human) Cell Lysate at 30 ug

Primary: Anti- Gemin 4 (SL13328R) at 1/1000 dilution

Secondary: IRDye800CW Goat Anti-Rabbit IgG at 1/20000 dilution

Predicted band size: 120 kD

Observed band size: 120 kD



Paraformaldehyde-fixed, paraffin embedded (human colon carcinoma); Antigen retrieval by boiling in sodium citrate buffer (pH6.0) for 15min; Block endogenous peroxidase by 3% hydrogen peroxide for 20 minutes; Blocking buffer (normal goat serum) at 37°C for 30min; Antibody incubation with (Gemin 4) Polyclonal Antibody, Unconjugated (SL13328R) at 1:200 overnight at 4°C, followed by operating according to SP Kit(Rabbit) (sp-0023) instructions and DAB staining.