



Rabbit Anti-Genethonin 1 antibody

SL13335R

Product Name:	Genethonin 1
Chinese Name:	淀粉结合域蛋白1抗体
Alias:	FLJ41801; Genethonin-1; Genethonin1; GENEX 3414; GENEX3414; GENX 3414; GENX3414; Starch binding domain 1; Starch binding domain containing protein 1; Starch-binding domain-containing protein 1; STBD 1; STBD1; STBD1_HUMAN.
Organism Species:	Rabbit
Clonality:	Polyclonal
React Species:	Human,Mouse,Rat,Dog,Pig,Cow,Horse,Rabbit,Sheep,
Applications:	ELISA=1:500-1000IHC-P=1:400-800IHC-F=1:400-800ICC=1:100-500IF=1:100-500 (Paraffin sections need antigen repair) not yet tested in other applications. optimal dilutions/concentrations should be determined by the end user.
Molecular weight:	39kDa
Cellular localization:	cytoplasmicThe cell membrane
Form:	Lyophilized or Liquid
Concentration:	1mg/ml
immunogen:	KLH conjugated synthetic peptide derived from human Genethonin 1:1-100/358<Extracellular>
Lsotype:	IgG
Purification:	affinity purified by Protein A
Storage Buffer:	0.01M TBS(pH7.4) with 1% BSA, 0.03% Proclin300 and 50% Glycerol.
Storage:	Store at -20 °C for one year. Avoid repeated freeze/thaw cycles. The lyophilized antibody is stable at room temperature for at least one month and for greater than a year when kept at -20°C. When reconstituted in sterile pH 7.4 0.01M PBS or diluent of antibody the antibody is stable for at least two weeks at 2-4 °C.
PubMed:	PubMed
Product Detail:	Genethonin-1 is a 358 amino acid single-pass type III membrane protein that contains one CBM20 (carbohydrate binding type-20) domain. A hydrophobic protein, Genethonin-1 is highly expressed in cardiac and skeletal muscle and is found at moderate levels in placenta and liver. Genethonin-1 and is thought to function in

carbohydrate binding. The gene encoding Genethonin-1 maps to human chromosome 4, which represents approximately 6% of the human genome, contains nearly 900 genes and is associated with Huntington's disease, Ellis-van Creveld syndrome, methylmalonic acidemia and polycystic kidney disease.

Function:

May have the capability to bind to carbohydrates.

Subcellular Location:

Membrane. Distributed in the transverse tubules and/or near the junctional sarcoplasmic reticulum.

Tissue Specificity:

Expressed at high level in skeletal and cardiac muscles. Moderately expressed in liver and placenta. No expression is found in pancreas, kidney or lung. Present in skeletal muscle, heart and placenta (at protein level).

Similarity:

Contains 1 CBM20 (carbohydrate binding type-20) domain.

SWISS:

O95210

Gene ID:

8987

Database links:

[Entrez Gene: 8987](#)Human

[Omim: 607406](#)Human

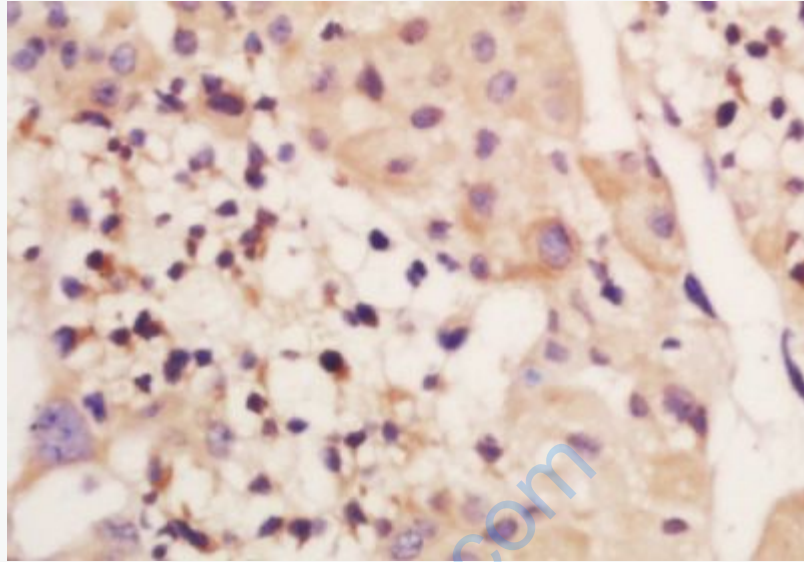
[SwissProt: O95210](#)Human

[Unigene: 109590](#)Human

[Unigene: 720509](#)Human

Important Note:

This product as supplied is intended for research use only, not for use in human, therapeutic or diagnostic applications.



Picture:

Tissue/cell: rat brain tissue; 4% Paraformaldehyde-fixed and paraffin-embedded;
Antigen retrieval: citrate buffer (0.01M, pH 6.0), Boiling bathing for 15min; Block endogenous peroxidase by 3% Hydrogen peroxide for 30min; Blocking buffer (normal goat serum,C-0005) at 37°C for 20 min;
Incubation: Anti-Gemin 7 Polyclonal Antibody, Unconjugated(SL13335R) 1:200, overnight at 4°C, followed by conjugation to the secondary antibody(SP-0023) and DAB(C-0010) staining