



Rabbit Anti-Giantin antibody

SL13356R

Product Name:	Giantin
Chinese Name:	高尔基体相关蛋白GCP372抗体
Alias:	372 kDa Golgi complex associated protein; 372 kDa Golgi complex-associated protein; GCP; GCP372; Giantin; GOGB1_HUMAN; GOLGB1; Golgi autoantigen golgin subfamily a member 1; Golgi autoantigen golgin subfamily b macrogolgin (with transmembrane signal) 1; Golgi autoantigen, golgin subfamily b, macrogolgin 1; Golgi complex associated protein 372kDa; Golgi complex associated protein 372kDa; Golgi complex-associated protein 372kDa; Golgi complex-associated protein 372kDa; Golgin B1; Golgin B1, golgi integral membrane protein; Golgin subfamily B member 1; GOLIM1; Macrogolgin; Macrogolgin; MGC33154.
Organism Species:	Rabbit
Clonality:	Polyclonal
React Species:	Human,Mouse,Rat,Dog,Horse,Rabbit,Hamster,Monkey,
Applications:	ELISA=1:500-1000IHC-P=1:400-800IHC-F=1:400-800Flow-Cyt=1µg/TestICC=1:100-500IF=1:100-500 (Paraffin sections need antigen repair) not yet tested in other applications. optimal dilutions/concentrations should be determined by the end user.
Molecular weight:	376kDa
Cellular localization:	cytoplasmicThe cell membrane
Form:	Lyophilized or Liquid
Concentration:	1mg/ml
immunogen:	KLH conjugated synthetic peptide derived from human Giantin:751-850/3259
Lsotype:	IgG
Purification:	affinity purified by Protein A
Storage Buffer:	0.01M TBS(pH7.4) with 1% BSA, 0.03% Proclin300 and 50% Glycerol.
Storage:	Store at -20 °C for one year. Avoid repeated freeze/thaw cycles. The lyophilized antibody is stable at room temperature for at least one month and for greater than a year when kept at -20°C. When reconstituted in sterile pH 7.4 0.01M PBS or diluent of antibody the antibody is stable for at least two weeks at 2-4 °C.
PubMed:	PubMed

The Golgi apparatus, which participates in glycosylation and transport of proteins and lipids in the secretory pathway, consists of a series of stacked cisternae (flattened membrane sacs). Interactions between the Golgi and microtubules are thought to be important for the reorganization of the Golgi after it fragments during mitosis. This gene encodes one of the golgins, a family of proteins localized to the Golgi. This encoded protein has been postulated to play roles in the stacking of Golgi cisternae and in vesicular transport. Several alternatively spliced transcript variants of this gene have been described, but the full-length nature of these variants has not been determined. [provided by RefSeq, Feb 2010]

Function:

May participate in forming intercisternal cross-bridges of the Golgi complex.

Subunit:

Homodimer; disulfide-linked. Interacts with PLK3.

Subcellular Location:

Golgi apparatus membrane.

SWISS:

Q14789

Gene ID:

2804

Database links:

[Entrez Gene: 2804](#)Human

[Entrez Gene: 224139](#)Mouse

[Entrez Gene: 192243](#)Rat

[Omim: 602500](#)Human

[SwissProt: Q14789](#)Human

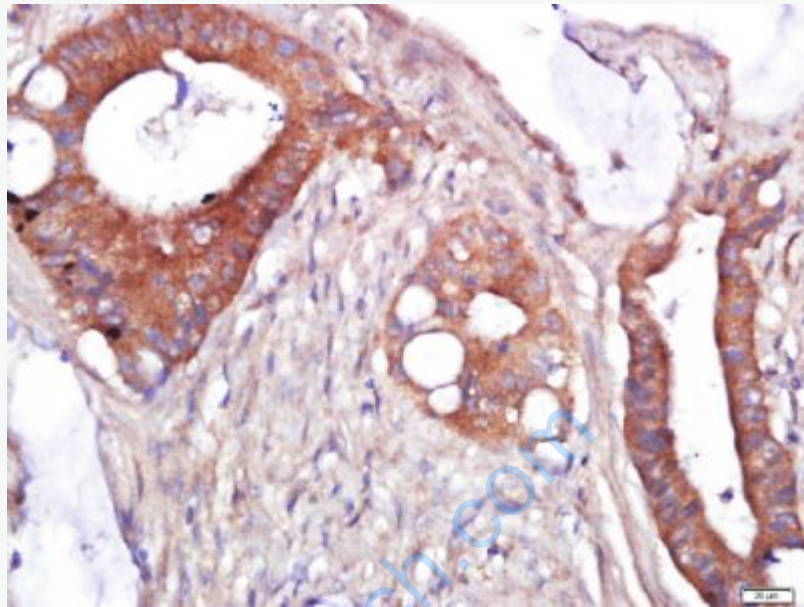
[Unigene: 213389](#)Human

[Unigene: 244815](#)Mouse

Important Note:

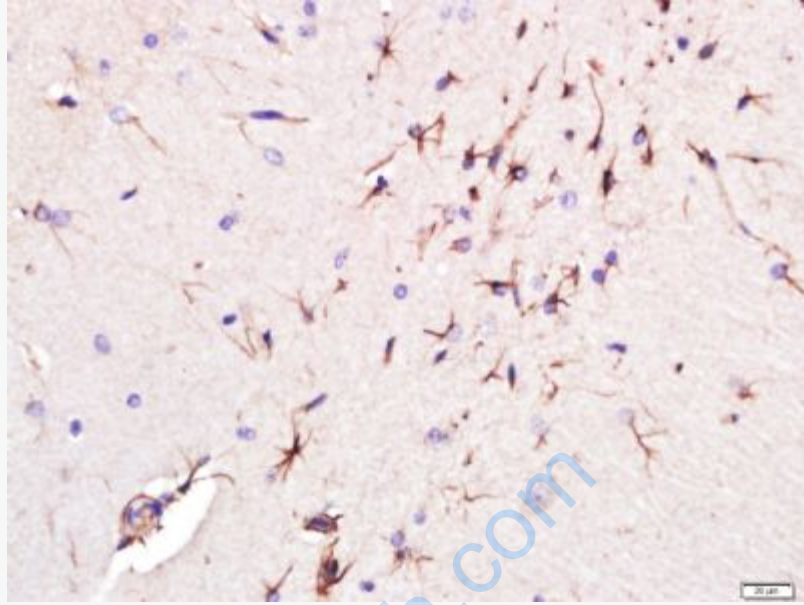
This product as supplied is intended for research use only, not for use in human, therapeutic or diagnostic applications.

Product Detail:



Picture:

Paraformaldehyde-fixed, paraffin embedded (human cervix cancer); Antigen retrieval by boiling in sodium citrate buffer (pH6.0) for 15min; Block endogenous peroxidase by 3% hydrogen peroxide for 20 minutes; Blocking buffer (normal goat serum) at 37°C for 30min; Antibody incubation with (Giantin) Polyclonal Antibody, Unconjugated (SL13356R) at 1:400 overnight at 4°C, followed by a conjugated secondary (sp-0023) for 20 minutes and DAB staining.

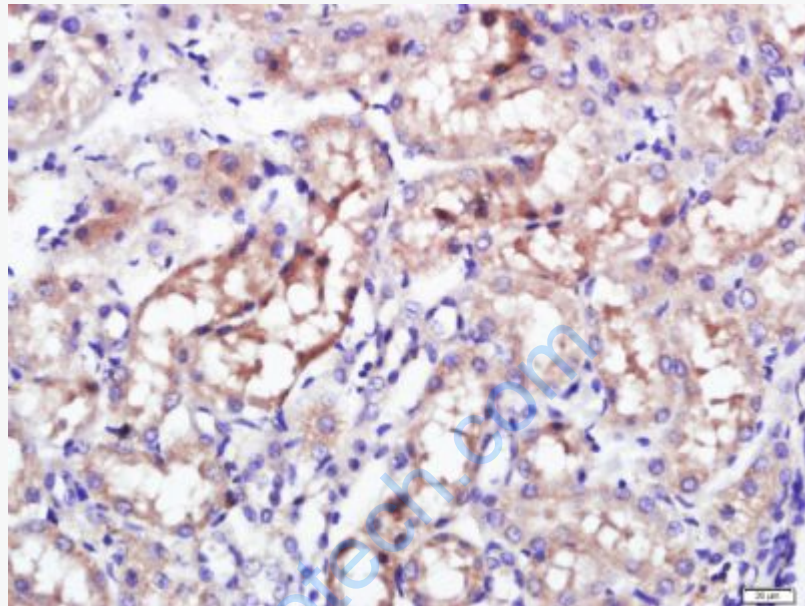


Paraformaldehyde-fixed, paraffin embedded (rat brain); Antigen retrieval by boiling in sodium citrate buffer (pH6.0) for 15min; Block endogenous peroxidase by 3% hydrogen peroxide for 20 minutes; Blocking buffer (normal goat serum) at 37°C for 30min; Antibody incubation with (Giantin) Polyclonal Antibody, Unconjugated (SL13356R) at 1:400 overnight at 4°C, followed by a conjugated secondary (sp-0023) for 20 minutes and DAB staining.

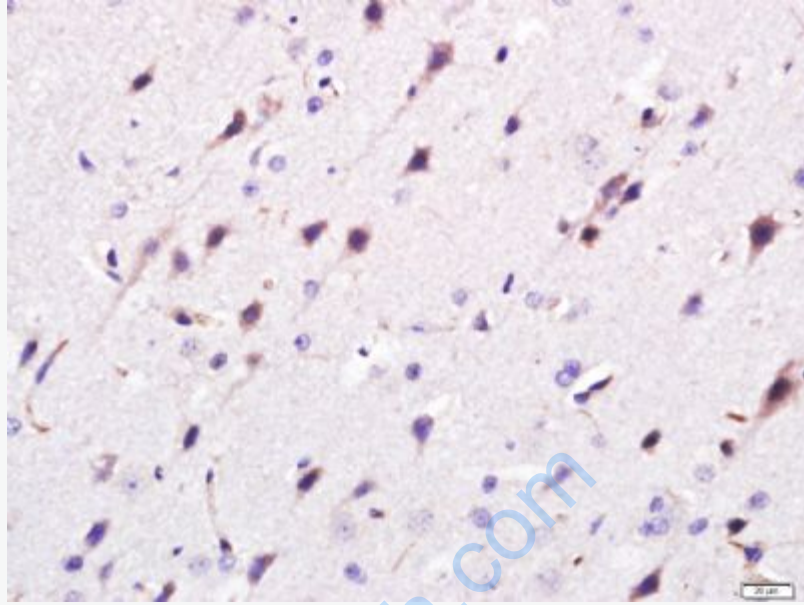


Paraformaldehyde-fixed, paraffin embedded (human cervix cancer); Antigen retrieval by boiling in sodium citrate buffer (pH6.0) for 15min; Block endogenous peroxidase by 3% hydrogen peroxide for 20 minutes; Blocking buffer (normal goat serum) at 37°C for 30min; Antibody incubation with (Giantin) Polyclonal Antibody, Unconjugated (SL13356R) at 1:400 overnight at 4°C, followed by a conjugated

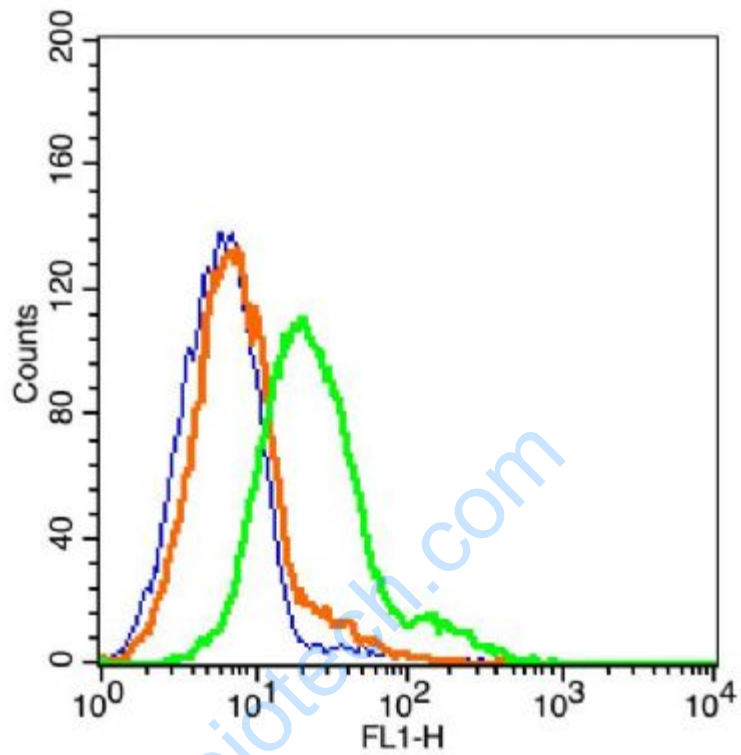
secondary (sp-0023) for 20 minutes and DAB staining.



Paraformaldehyde-fixed, paraffin embedded (rat kidney); Antigen retrieval by boiling in sodium citrate buffer (pH6.0) for 15min; Block endogenous peroxidase by 3% hydrogen peroxide for 20 minutes; Blocking buffer (normal goat serum) at 37°C for 30min; Antibody incubation with (Giantin) Polyclonal Antibody, Unconjugated (SL13356R) at 1:400 overnight at 4°C, followed by a conjugated secondary (sp-0023) for 20 minutes and DAB staining.



Paraformaldehyde-fixed, paraffin embedded (rat brain); Antigen retrieval by boiling in sodium citrate buffer (pH6.0) for 15min; Block endogenous peroxidase by 3% hydrogen peroxide for 20 minutes; Blocking buffer (normal goat serum) at 37°C for 30min; Antibody incubation with (Giantin) Polyclonal Antibody, Unconjugated (SL13356R) at 1:400 overnight at 4°C, followed by a conjugated secondary (sp-0023) for 20 minutes and DAB staining.

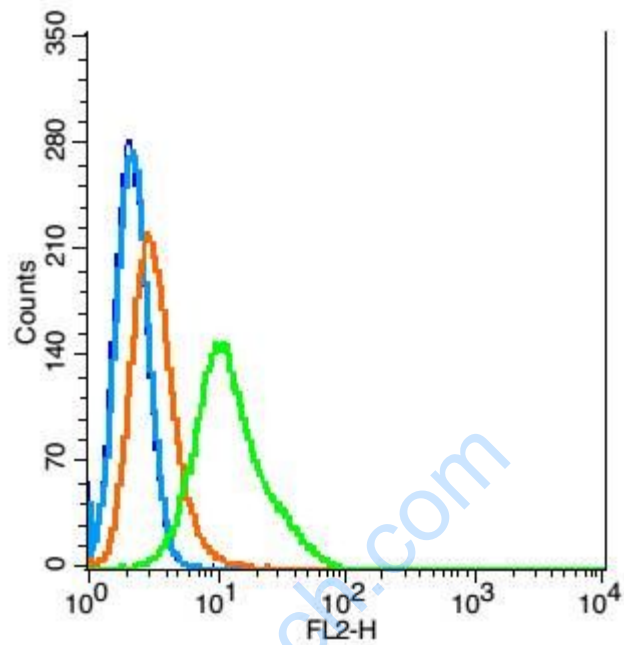


Blank control: Lovo Cells(blue).

Primary Antibody: Rabbit Anti-Giantin/AF488 Conjugated antibody (SL13356R),

Dilution: 5 μ g in 100 μ L 1X PBS containing 0.5% BSA;

Isotype Control Antibody: Rabbit IgG/AF488(orange) ,used under the same conditions.



Blank control: Hela(blue), the cells were fixed with 2% paraformaldehyde (10 min) and then permeabilized with ice-cold 90% methanol for 30 min on ice.

Isotype Control Antibody: Rabbit IgG(orange) ; Secondary Antibody: Goat anti-rabbit IgG-PE(white blue), Dilution: 1:200 in 1 X PBS containing 0.5% BSA ;

Primary Antibody Dilution: 1 μ g in 100 μ L 1X PBS containing 0.5% BSA(green).